

Reference

Villeroy & Boch



Uponor participace



4,000 sqm

Villeroy & Boch

Part of the historic abbey complex on the premises of Villeroy & Boch's headquarters in Mettlach has been completely renovated.

Projektová fakta:

Location

Mettlach, Germany

Dokončení

2018

Typ budovy

Kancelářské budovy

Product systems

Plošné vytápění a chlazení, MLC
připojení otopných těles a instalace
rozvodů vody

Typ projektu

Renovation

Partneři

Hofmann & Ollinger, Mettlach-
Wehingen

www.hoffmann-ollinger.de

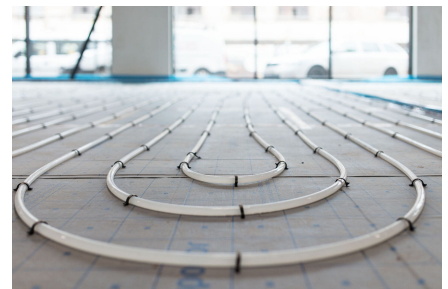
Underfloor heating for office and conference center

The upper two floors are used as an office and conference center with open structures and a variety of meeting rooms that promote communication and collaboration among all employees. On the first floor, a "marketplace" has been created that is freely accessible to guests, tourists and customers, where products from the extensive Villeroy & Boch portfolio and complementary offers are presented in an environment that reflects the brand feeling.

Underfloor heating for comfortable and efficient office working environment

Uponor pipes laid by Hofmann & Ollinger, Mettlach-Wehingen, for underfloor heating and cooling ensure a comfortable temperature throughout the 4,000 square meter area. The drinking water installation, including the distribution and riser pipes, was also brought up to the latest state of the art with Uponor pipes in sizes 16-75.

Villeroy & Boch





uponor

Kontaktujte nás

Uponor, s.r.o.
Zelený pruh 95/97
140 00 Praha 4 - Braník
Česká republika

Telefon +420 233 313 844
E-mail zakaznickyservis@uponor.com
W www.uponor.com