

Referencer

Villeroy & Boch



Uponors rolle



4,000 sqm

Villeroy & Boch

Part of the historic abbey complex on the premises of Villeroy & Boch's headquarters in Mettlach has been completely renovated.

Projektfakta:

Location

Mettlach, Germany

Færdiggørelse

2018

Bygningstype

Kontorbygning

Product systems

Gulvarme- og køling, Brugsvand- og
varmesystem MLC

Projekttype

Renovation

Partnere

Hofmann & Ollinger, Mettlach-
Wehingen

www.hoffmann-ollinger.de

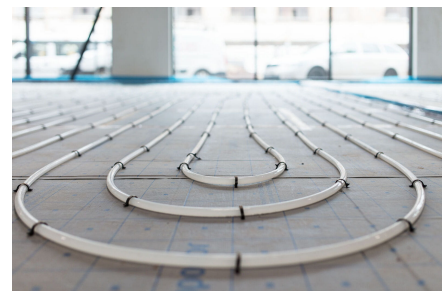
Underfloor heating for office and conference center

The upper two floors are used as an office and conference center with open structures and a variety of meeting rooms that promote communication and collaboration among all employees. On the first floor, a "marketplace" has been created that is freely accessible to guests, tourists and customers, where products from the extensive Villeroy & Boch portfolio and complementary offers are presented in an environment that reflects the brand feeling.

Underfloor heating for comfortable and efficient office working environment

Uponor pipes laid by Hofmann & Ollinger, Mettlach-Wehingen, for underfloor heating and cooling ensure a comfortable temperature throughout the 4,000 square meter area. The drinking water installation, including the distribution and riser pipes, was also brought up to the latest state of the art with Uponor pipes in sizes 16-75.

Villeroy & Boch





+GF+

Kontakt os

Langebjerg 29C
4000 Roskilde

W www.uponor.com