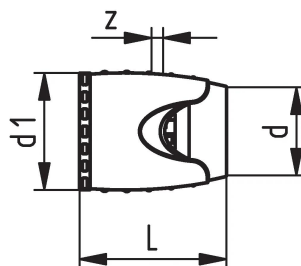
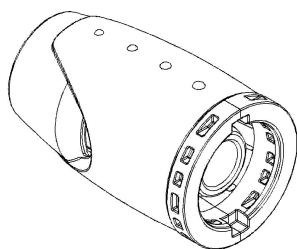


GF iFIT adapter 25

1151111

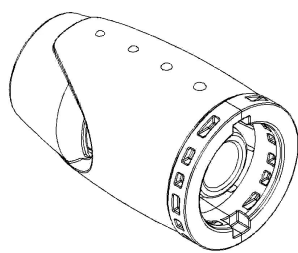
Materiale: PPSU, PA



No about information

GF iFIT adapter 25

1151111



Measurements

| | |
|-------------------|----|
| Indre_diameter_di | 45 |
| LENGTH_L | 62 |
| Z | 8 |

Status

| | |
|--------------------------|------------|
| Item Available From date | 2026-01-01 |
|--------------------------|------------|

Product code

| | |
|--------------|----------------|
| Item no EAN | 7611205885427 |
| Item no GF | 762101034 |
| Item no GTIN | 07611205885427 |
| Item no LVI | 1749398 |
| Item no RSK | 1878642 |

Dimensioner

| | |
|-------------------|------|
| Vare Enhedshøjde | 45 |
| Vare enhedslængde | 60 |
| Vare Enhedsvægt | 0,07 |
| Emneenhedsbredde | 40 |
| Item_UOM | stk |

Packaging

| | |
|------------------------|----------------|
| Emballage GTIN PL1 | 07611205904890 |
| Emballage GTIN PL2 | 07611205904883 |
| Emballage GTIN PL4 | 06414900118767 |
| Emballagehøjde PL1 | 50 |
| Emballagehøjde PL2 | 225 |
| Emballagehøjde PL4 | 1200 |
| Emballeringslængde PL1 | 165 |
| Emballage Længde PL2 | 410 |
| Emballage Længde PL4 | 1200 |

| | |
|----------------------|-------------------|
| Emballagemængde PL1 | 5 |
| Emballagemængde PL2 | 50 |
| Emballagemængde PL4 | 2250 |
| Emballagetype PL1 | Plastic_Bag |
| Emballagetype PL2 | Medium_Box |
| Emballagetype PL4 | Pallet |
| Emballagevolumen PL1 | 0,001155 |
| Emballagevolumen PL2 | 0,02444625 |
| Emballagevolumen PL4 | 1,152 |
| Emballagevægt PL1 | 0,357817343792857 |
| Emballagevægt PL2 | 3,88943465302637 |
| Emballagevægt PL4 | 200,024559386187 |
| Emballagebredde PL1 | 140 |
| Emballagebredde PL2 | 265 |
| Emballagebredde PL4 | 800 |

Tekniske dokumenter

Download dokumenterne her 

**Uponor Building Solutions
Denmark**

Kornmarksvej 21
2605, Brøndby
Danmark

T +45 43 26 34 00
E bld.dk@uponor.com

www.uponor.com/da-dk/vvs