

### Beteiligung von Uponor

#### ✓ Installed products

- 253 loops of ¾" Uponor helioPEX™
- 37 Uponor Commercial Stainless-steel Manifolds
- 74 10-foot lengths of 1½" Wirsbo hePEX™
- ProPEX fittings
- Pipe sleeves for crossing concrete joints

#### ✓ Services included

- Uponor Technical Sales
- Uponor Construction Services
- Uponor Engineering Services
- Uponor Design Services
- Uponor Marketing
- Uponor Customer Service
- Collaboration with Uponor Product Management and Sales

## Shopping Centre Requires Efficient Snow Removal System to Help Meet LEED®-Gold and Carbon-Neutral Design Requirements

As developer Carbonleo designed Royalmount in Mount Royal, Québec, they created a pedestrian-oriented space that prioritized sustainable landscape, public transit access, and active mobility. Royalmount became an eco-community that seamlessly integrates nature throughout its indoor-outdoor design, offering a unique blend of experiential attractions, retail stores, office spaces, and accommodations that are rooted in restoration and environmental consciousness. Because Québec experiences intense winters with unpredictable amounts of snow and ice, Carbonleo needed a solution to heat the outdoor

sidewalks, allowing guests to enjoy the facility safely during winter while also protecting the outdoor greenery.❏

---

## Fakten zum Projekt

Location	Fläche	Fertigstellung
Mount Royal, Canada	824,000 square feet❏	2025
Gebäudetyp		
Einkaufszentren		
Adresse	Webseite	Art des Projekts
5050 chemin de la Côte-de-Liesse Mont-Royal, QC H4P 0C9 Canada	<a href="https://www.royalmount.com/">https://www.royalmount.com/</a>	Neubau

---

## Partner

gbi Engineering Services	STR Mechanical	Pomerleau
Deschênes & Fils		

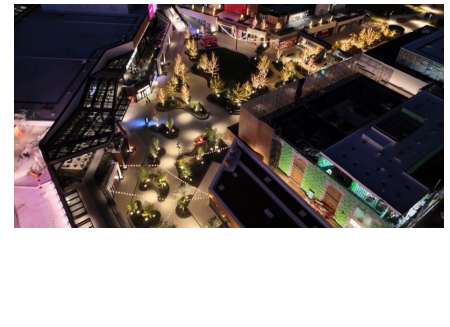
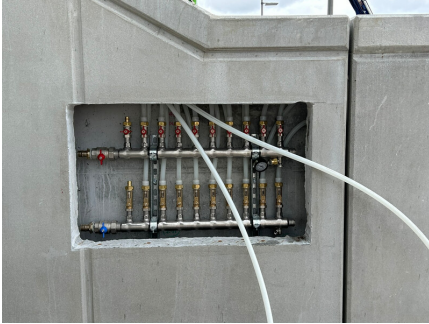
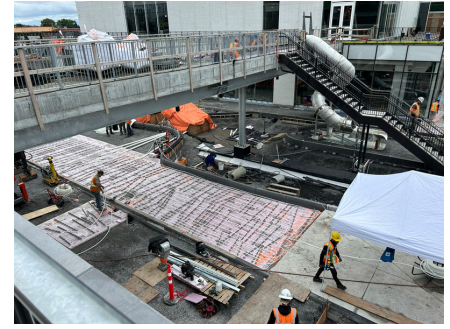
---

# Uponor Snow Melt Boosts Pedestrian Safety and Supports Carbon-Neutral Design

To align with Carbonleo's goal of year-round indoor-outdoor harmony, engineering firm gbi selected an Uponor Snow Melt System using Uponor helioPEX™ and Wirsbo hePEX™ pipe along with Uponor Commercial Stainless-steel Manifolds. The pipe is embedded in the concrete of the sidewalks and staircases and circulates a mixture of water and glycol, keeping the surfaces warm to melt snow and ice upon contact. Guests can safely enjoy the beauty of the Canadian winter without the disruption of shoveling and other snow-removal methods. Additionally, unlike harsh deicing chemicals, the Uponor Snow Melt System does not pose a threat to the project's vast array of outdoor greenery.❏

## Royalmount Gallery





”

"The cooperation [with Uponor] was magnificent despite all the changes as we went. Having updated plans ready, sometimes for the next day, was important to be able to keep going. And I didn't run out of materials—that's essential."

- José Carbonell, president, STR Mécanique

**+GF+**

Adresse

Uponor Vertriebs GmbH  
IZ. NÖ Süd, Straße 7, Objekt 58D  
A-2355 Wr. Neudorf

Telefon +43 2236 23003-0

E-Mail  
kundendienst.at.bfs@georgfischer.com  
W [www.uponor.com](http://www.uponor.com)