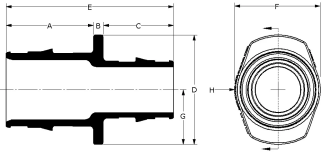


# QS-style copper fitting adapters

Project information	
Job name:	Location:
Engineer:	Date submitted:
Contractor:	Submitted by:
Manufacturer's representative:	Approved by:

Technical data	
Material	Brass
Temp/pressure ratings	73 °F (23 °C) at 160 psi (11 bar)
	180 °F (82 °C) at 100 psi (6.9 bar)
	200 °F (93 °C) at 80 psi (5.5 bar)
Prop 65 label required?	Yes

Product information and application use
The Uponor QS-style Copper Adapters, combined with the appropriate QS-style Fitting Assembly, transition Wirsbo hePEXTM tubing to 1/2", 3/4" or 1" copper pipe in hydronic heating applications



Part name	Part no.	A [inch]	B [inch]	C [inch]	D [inch]	E [inch]	F [inch]	G [inch]	H [inch]	End Type 1	End Type 2
QS-style Copper Fitting Adapter, R20 x 1/2" Copper	A4342050	0.601	0.275	0.512	1.224	1.388	1.063	0.612	0.531	ISO 228-G 3/4"	Sweat 1/2"
QS-style Copper Fitting Adapter, R25 X 1" Copper (for 3/4" and 5/8" tubing only)	A4342510	0.97	0.299	0.658	1.585	1.927	1.375	0.792	0.687	ISO 228-G 1"	Sweat 1"

Part name	Part no.	Weight per UOM [lbs/UOM]
QS-style Copper Fitting Adapter, R20 x 1/2" Copper	A4342050	0.15
QS-style Copper Fitting Adapter, R25 X 1" Copper (for 3/4" and 5/8" tubing only)	A4342510	0.29

Part name	Part no.	Codes	Standards	Listings
QS-style copper fitting adapters	All	-	ASTM F877	-
In addition, the following parts have additional codes, standards, or listings:				
QS-style Copper Fitting Adapter, R20 x 1/2" Copper	A4342050		R20: ISO 228-G ¾"	
QS-style Copper Fitting Adapter, R25 X 1" Copper (for 3/4" and 5/8" tubing only)	A4342510		R25: ISO 228-G 1"	

Installation	Related applications
The corresponding compression fitting threads onto the R20 or R25 thread to adapt to copper. For additional information, refer to the Uponor Radiant Floor Heating Installation Handbook.	Radiant Heating and Cooling Systems
	Permafrost Protection Systems
	Turf Conditioning Systems

Footnotes	Contact information
-	Uponor Inc. 5925 148th Street West Apple Valley, MN 55124 T 800.321.4739 F 952.891.2008  Uponor Ltd. 6510 Kennedy Road Mississauga, ON L5T 2X4 T 888.594.7726 F 800.638.9517