

# PVC bend supports

## Project information

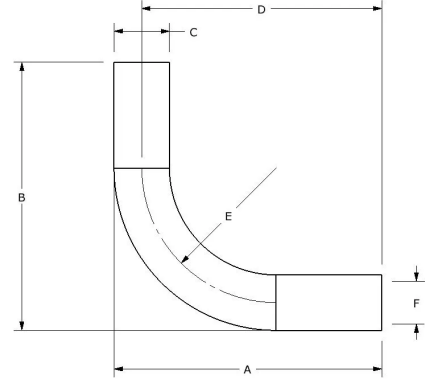
Job name:	Location:
Engineer:	Date submitted:
Contractor:	Submitted by:
Manufacturer's representative:	Approved by:

## Technical data

Material	Plastic
Subcomponent Material	PVC
Prop 65 label required?	Yes

## Product information and application use

The Uponor PVC Bend Supports are for use in concrete slab installations. The sleeve is used to aid and support the PEX tubing as it enters/exits the concrete slab at a 90° angle.



Part name	Part no.	A [inch]	B [inch]	C [inch]	D [inch]	E [inch]	F [inch]	Weight per UOM [lbs/UOM]
3/4" PVC Elbow for 3/8" and 1/2" PEX Bend Support	A5500500	0.276	5.724	1.05	5.724	7.448	1.05	0.25
1" PVC Elbow for 5/8" PEX Bend Support	A5500625	6.384	6.384	1.32	5.724	7.448	1.04	0.4
1 1/4" PVC Elbow for 3/4" PEX Bend Support	A5500750	6.554	6.554	1.66	5.724	7.448	1.36	0.65
1 1/2" PVC Elbow for 1" PEX Bend Support	A5501000	6.674	6.674	1.9	5.724	7.448	1.58	0.75

## Installation

Feed the tubing through the bend sleeve at the 90° angle where the tubing enters the slab from the manifold. Refer to the Uponor Professional Plumbing Installation Guide or the Uponor Radiant Floor Installation Handbook for additional information.

## Related applications

- Radiant Heating and Cooling Systems
- Permafrost Protection Systems
- Turf Conditioning Systems
- PEX-a Plumbing Systems

## Footnotes

-

## Contact information

Uponor Inc.  
5925 148th Street West  
Apple Valley, MN 55124  
T 800.321.4739  
F 952.891.2008

Uponor Ltd.  
6510 Kennedy Road  
Mississauga, ON L5T 2X4  
T 888.594.7726  
F 800.638.9517