

# ProPEX lead-free (LF) brass CPVC spigot adapter kits

## Project information

Job name:	Location:
Engineer:	Date submitted:
Contractor:	Submitted by:
Manufacturer's representative:	Approved by:

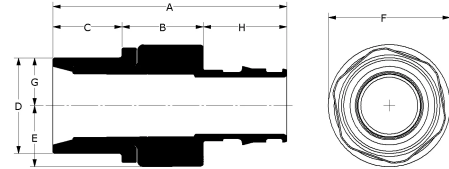
## Technical data

Material	LF Brass
Temp/pressure ratings	73 °F (23 °C) at 160 psi (11 bar) 180 °F (82 °C) at 100 psi (6.9 bar) 200 °F (93 °C) at 80 psi (5.5 bar)
Prop 65 label required?	Yes

## Product information and application use

ProPEX® Lead-free (LF) Brass CPVC Spigot Adapter Kit transitions Uponor PEX pipe to CPVC copper tube size (CTS) or iron pipe size (IPS) fittings for use in hot and cold domestic potable-water systems and hydronic radiant heating and cooling systems. 1

Note: Temperature and pressure ratings stated are hydrostatic ratings. For domestic hot-water (DHW) and DHW recirculation installations, operating conditions should not exceed 140°F (60°C) at 80 psi (5.5 bar) in accordance with ASTM F2023. For additional information regarding application-specific temperature and pressure ratings, refer to the Uponor PEX Piping Systems Design and Installation Manual.



Part name	Part no.	A [inch]	B [inch]	C [inch]	D [inch]	E [inch]	F [inch]	G [inch]	H [inch]	Weight per UOM [lbs/UOM]	End Type 1
ProPEX LF Brass x CPVC Spigot Adapter Kit, 1 1/4" PEX x 1 1/4" CPVC (IPS or CTS)	CP4501300	4.055	1.41	1.2	1.656	1.055	2.11	0.828	1.445	0.6	ProPEX 1-1/4"
ProPEX LF Brass x CPVC Spigot Adapter Kit, 1 1/2" PEX x 1 1/2" CPVC (IPS or CTS)	CP4501500	4.554	1.46	1.39	1.9	1.2	2.4	0.95	1.704	0.75	ProPEX 1-1/2"
ProPEX LF Brass x CPVC Spigot Adapter Kit, 2" PEX x 2" CPVC (IPS or CTS)	CP4502000	5.372	1.75	1.39	2.37	1.5	3.0	1.185	2.147	1.4	ProPEX 2"

Part name	Part no.	End Type 2
ProPEX LF Brass x CPVC Spigot Adapter Kit, 1 1/4" PEX x 1 1/4" CPVC (IPS or CTS)	CP4501300	CPVC 1-1/4"
ProPEX LF Brass x CPVC Spigot Adapter Kit, 1 1/2" PEX x 1 1/2" CPVC (IPS or CTS)	CP4501500	CPVC 1-1/2"
ProPEX LF Brass x CPVC Spigot Adapter Kit, 2" PEX x 2" CPVC (IPS or CTS)	CP4502000	CPVC 2"

## Installation

Use the appropriate Uponor ProPEX Ring for the tubing (sold separately). Refer to the Uponor AquaPEX® Professional Plumbing Installation Guide or Uponor Radiant Floor Heating Installation Handbook for additional information. Follow all CPVC instructions and guidelines for proper CPVC connections.

## Related applications

- PEX-a Plumbing Systems
- Radiant Heating and Cooling Systems
- Permafrost Protection Systems
- Turf Conditioning Systems
- AquaSAFE™ Fire Safety Systems

## Codes

UPC|IBC|IRC|IPC|NPC of Canada|UMC|NSPC|IMC

## Standards

NSF-372|ASTM F877|ASTM F1960|CSA B137.5|ASTM D2846|NSF-61|NSF-14

## Listings

IAPMO-ES|ICC-ES-PMG|cNSFus-pw-G|U.P.Code|cQAlus P321\*

## Footnotes

\* Some SKUs in this family have additional codes, standards, or listings. Please see uponor.com for complete information.

## Contact information

Uponor Inc.  
5925 148th Street West  
Apple Valley, MN 55124  
T 800.321.4739  
F 952.891.2008

Uponor Ltd.  
6510 Kennedy Road  
Mississauga, ON L5T 2X4  
T 888.594.7726  
F 800.638.9517