

# ProPEX lead-free (LF) brass CPVC spigot adapters

## Project information

|                                |                 |
|--------------------------------|-----------------|
| Job name:                      | Location:       |
| Engineer:                      | Date submitted: |
| Contractor:                    | Submitted by:   |
| Manufacturer's representative: | Approved by:    |

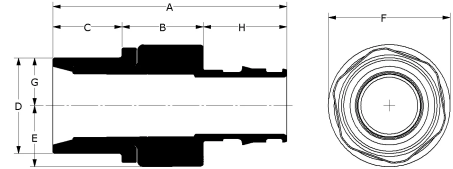
## Technical data

|                         |  |
|-------------------------|--|
| Material                | LF Brass   |
| Subcomponent Material   | Body: LF Brass and CPVC<br>O-ring: EPDM  |
| Temp/pressure ratings   | 73 °F (23 °C) at 160 psi (11 bar)<br>180 °F (82 °C) at 100 psi (6.9 bar)<br>200 °F (93 °C) at 80 psi (5.5 bar) |
| Prop 65 label required? | Yes  |

## Product information and application use

ProPEX® Lead-free (LF) Brass CPVC Spigot Adapters transition Uponor PEX tubing to CPVC copper tube size (CTS) fittings for use in hot and cold domestic potable water systems and hydronic radiant heating and cooling systems. 1

Note: Temperature and pressure ratings stated are hydrostatic ratings. For domestic hot-water (DHW) and DHW recirculation installations, operating conditions should not exceed 140°F (60°C) at 80 psi (5.5 bar) in accordance with ASTM F2023. For additional information regarding application-specific temperature and pressure ratings, refer to the Uponor PEX Piping Systems Design and Installation Manual.



| Part name   | Part no.  | A<br>[inch] | B<br>[inch] | C<br>[inch] | D<br>[inch] | E<br>[inch] | F<br>[inch] | G<br>[inch] | H<br>[inch] | End<br>Type<br>1 | End<br>Type<br>2 |
|---|-----------|-------------|-------------|-------------|-------------|-------------|-------------|-------------|-------------|------------------|------------------|
| ProPEX LF Brass x CPVC Spigot Adapter, 1 1/4" PEX x 1 1/4" CPVC (CTS) | CP4501313 | 3.705       | 1.14        | 1.12        | 1.373       | 1.055       | 2.11        | 0.687       | 1.445       | ProPEX<br>1-1/4" | CPVC<br>1-1/4"   |
| ProPEX LF Brass x CPVC Spigot Adapter, 1 1/2" PEX x 1 1/2" CPVC (CTS) | CP4501515 | 4.204       | 1.18        | 1.32        | 1.627       | 1.2         | 2.4         | 0.813       | 1.704       | ProPEX<br>1-1/2" | CPVC<br>1-1/2"   |
| ProPEX LF Brass x CPVC Spigot Adapter, 2" PEX x 2" CPVC (CTS)         | CP4502020 | 5.287       | 1.42        | 1.72        | 2.123       | 1.5         | 3.0         | 1.061       | 2.147       | ProPEX<br>2"     | CPVC<br>2"       |

| Part name   | Part no.  | Weight per UOM [lbs/UOM] |
|---|-----------|--------------------------|
| ProPEX LF Brass x CPVC Spigot Adapter, 1 1/4" PEX x 1 1/4" CPVC (CTS) | CP4501313 | 0.6                      |
| ProPEX LF Brass x CPVC Spigot Adapter, 1 1/2" PEX x 1 1/2" CPVC (CTS) | CP4501515 | 0.75                     |
| ProPEX LF Brass x CPVC Spigot Adapter, 2" PEX x 2" CPVC (CTS)         | CP4502020 | 1.4                      |

| Part name  | Part no. | Codes   | Standards                                     | Listings  |
|--|----------|---|---|---|
| ProPEX lead-free (LF) brass CPVC spigot adapters | All      | UPC IBC IRC IPC NPC of<br>Canada UMC NSPC IMC | ASTM F877 ASTM F1960 CSA<br>B137.5 ASTM D2846 | IAPMO-ES HUD MR 1269 ICC-ES-<br>PMG cNSFus-pw-G U.P.Code cQAlus<br>P321 |

In addition, the following parts have additional codes, standards, or listings:

|   |           |   |
|---|-----------|---|
| ProPEX LF Brass x CPVC Spigot Adapter, 1 1/4" PEX x 1 1/4" CPVC (CTS) | CP4501313 | NSF/ANSI/CAN 372 NSF/ANSI/CAN<br>61 NSF/ANSI 14 |
| ProPEX LF Brass x CPVC Spigot Adapter, 1 1/2" PEX x 1 1/2" CPVC (CTS) | CP4501515 | NSF-372 NSF-61 NSF-14                           |
| ProPEX LF Brass x CPVC Spigot Adapter, 2" PEX x 2" CPVC (CTS)         | CP4502020 | NSF-372 NSF-61 NSF-14                           |

## Installation

Use the appropriate Uponor ProPEX Ring for the tubing (sold separately). Refer to the Uponor AquaPEX® Professional Plumbing Installation Guide or Uponor Radiant Floor Heating Installation Handbook for additional information. Follow all CPVC instructions and guidelines for proper CPVC connections.

## Related applications

PEX-a Plumbing Systems  
Radiant Heating and Cooling Systems  
Permafrost Protection Systems  
Turf Conditioning Systems  
AquaSAFE™ Fire Safety Systems

| Footnotes |  | Contact information    |                         |
|-----------|--|------------------------|-------------------------|
| -         |  | Uponor Inc.            | Uponor Ltd.             |
|           |  | 5925 148th Street West | 6510 Kennedy Road       |
|           |  | Apple Valley, MN 55124 | Mississauga, ON L5T 2X4 |
|           |  | T 800.321.4739         | T 888.594.7726          |
|           |  | F 952.891.2008         | F 800.638.9517          |