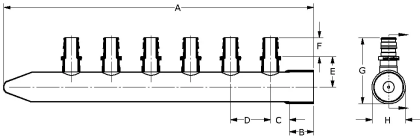


# ProPEX (type L) copper lead-free (LF) valved manifolds

Project information	
Job name:	Location:
Engineer:	Date submitted:
Contractor:	Submitted by:
Manufacturer's representative:	Approved by:

Technical data	
Material	Copper
Manifold size	1 inch
End type 1	ProPEX 1/2"
Temp/pressure ratings	73 °F (23 °C) at 160 psi (11 bar)
	180 °F (82 °C) at 100 psi (6.9 bar)
	200 °F (93 °C) at 80 psi (5.5 bar)
	210 °F (99 °C) at 149 psi (10.3 bar)
Max. fluid flow rate	21 gpm
Prop 65 label required?	Yes



## Product information and application use

Uponor's 1" Copper Manifold with Lead-free Brass 1/2" ProPEX® Ball Valve provides simple and easy isolation of individual loops. 1 Sections can sweat together to extend the number of outlets using a standard 1" copper coupling. Both 1" ends are copper pipe size and require a copper end cap, coupling or transition fitting to make the proper system connection. Do not exceed accepted flow rates for 1" nominal copper.

Note: Temperature and pressure ratings stated are hydrostatic ratings. For domestic hot-water (DHW) and DHW recirculation installations, operating conditions should not exceed 140°F (60°C) at 80 psi (5.5 bar) in accordance with ASTM F2023. For additional information regarding application-specific temperature and pressure ratings, refer to the Uponor PEX Piping Systems Design and Installation Manual.

Part name	Part no.	A [inch]	B [inch]	C [inch]	D [inch]	E [inch]	F [inch]	G [inch]	H [inch]	Weight per UOM [lbs/UOM]
1" Copper Manifold with LF Brass 1/2" ProPEX Ball Valve, 4 outlets	LF2500400	7.5	0	1.5	1.5	2.698	0.709	3.97	1.653	1.65
1" Copper Manifold with LF Brass 1/2" ProPEX Ball Valve, 6 outlets	LF2500600	10.5	0	1.5	1.5	2.698	0.709	3.97	1.653	2.6
1" Copper Manifold with LF Brass 1/2" ProPEX Ball Valve, 8 outlets	LF2500800	13.5	0	1.5	1.5	2.698	0.709	3.97	1.653	3.4
1" Copper Manifold with LF Brass 1/2" ProPEX Ball Valve, 10 outlets	LF2501000	16.5	0	1.5	1.5	2.698	0.709	3.97	1.653	4.2
1" Copper Manifold with LF Brass 1/2" ProPEX Ball Valve, 12 outlets	LF2501200	19.5	0	1.5	1.5	2.698	0.709	3.97	1.653	4.85

Part name	Part no.	Codes	Standards	Listings
ProPEX (type L) copper lead-free (LF) valved manifolds	All	UPC IBC IRC IPC NPC of Canada UMC NSPC IMC	NSF-372 ASTM F877 ASTM F1960 CSA B137.5 NSF-61 NSF-14	IAPMO-ES ICC-ES-PMG cNSFus-pw-G U.P.Code

Installation	Related applications
The installer can use any product designed to mount 1" copper pipe as a mounting bracket. Any bend within 6 inches of the ProPEX connection to the manifold requires the use of a Tube Talon (F7050750) or Bend Support (A5110500 and A5150500). Refer to the AquaPEX® Professional Plumbing Installation Guide for additional information.	PEX-a Plumbing Systems

Notes
Flow at 4 fps: 10.2 gpm Flow at 5 fps: 12.8 gpm Flow at 8 fps: 20.5 gpm

Footnotes	Contact information
-	Uponor Inc. 5925 148th Street West Apple Valley, MN 55124 T 800.321.4739 F 952.891.2008  Uponor Ltd. 6510 Kennedy Road Mississauga, ON L5T 2X4 T 888.594.7726 F 800.638.9517