

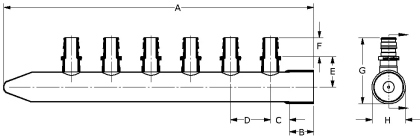
ProPEX (type L) copper branch manifolds

| Project information | |
|--------------------------------|-----------------|
| Job name: | Location: |
| Engineer: | Date submitted: |
| Contractor: | Submitted by: |
| Manufacturer's representative: | Approved by: |

| Technical data | |
|---|--|
| Material | Copper |
| Subcomponent Material | Copper, LF Brass |
| Manifold size | 1 inch |
| End type 1 | ProPEX 1/2" |
| End type 2 | Sweat 1" |
| Temp/pressure ratings | 73 °F (23 °C) at 160 psi (11 bar) 180 °F (82 °C) at 100 psi (6.9 bar) 200 °F (93 °C) at 80 psi (5.5 bar) 210 °F (99 °C) at 149 psi (10.3 bar) |
| Max. fluid flow rate | 21 gpm |
| Prop 65 label required? | Yes |
| Product information and application use | |

The Uponor 1" Copper Branch Manifold with 1/2" ProPEX® Lead-free (LF) Outlets is used for hot and cold domestic potable-water distribution systems.1 The manifold has a 1" copper sweat fitting adapter supply connection. All outlets are configured with 1/2" ProPEX LF brass connections.

Note: Temperature and pressure ratings stated are hydrostatic ratings. For domestic hot-water (DHW) and DHW recirculation installations, operating conditions should not exceed 140°F (60°C) at 80 psi (5.5 bar) in accordance with ASTM F2023. For additional information regarding application-specific temperature and pressure ratings, refer to the Uponor PEX Piping Systems Design and Installation Manual.



| Part name | Part no. | A [inch] | B [inch] | C [inch] | D [inch] | E [inch] | F [inch] | G [inch] | H [inch] | Weight per UOM [lbs/UOM] |
|--|-----------|-------------|-------------|-------------|-------------|-------------|-------------|-------------|-------------|--------------------------------|
| ProPEX 1" Copper Branch Manifold with 1/2" ProPEX LF brass outlets, 4 outlets | LF2801050 | 8.675 | 0.987 | 0.639 | 1.5 | 1.143 | 0.709 | 2.479 | 1.256 | 0.8 |
| ProPEX 1" Copper Branch Manifold with 1/2" ProPEX LF brass outlets, 6 outlets | LF2811050 | 11.675 | 0.987 | 0.639 | 1.5 | 1.143 | 0.709 | 2.479 | 1.256 | 1.1 |
| ProPEX 1" Copper Branch Manifold with 1/2" ProPEX LF brass outlets, 8 outlets | LF2821050 | 14.675 | 0.987 | 0.639 | 1.5 | 1.143 | 0.709 | 2.479 | 1.256 | 1.4 |
| ProPEX 1" Copper Branch Manifold with 1/2" ProPEX LF brass outlets, 10 outlets | LF2831050 | 17.675 | 0.987 | 0.639 | 1.5 | 1.143 | 0.709 | 2.479 | 1.256 | 1.7 |
| ProPEX 1" Copper Branch Manifold with 1/2" ProPEX LF brass outlets, 12 outlets | LF2841050 | 20.675 | 0.987 | 0.639 | 1.5 | 1.143 | 0.709 | 2.479 | 1.256 | 1.9 |

| Part name | Part no. | Codes | Standards | Listings |
|---|-----------|--|---|--|
| ProPEX (type L) copper branch manifolds | All | UPC IBC IRC IPC NPC of Canada NSPC IMC | NSF-372 ASTM F877 ASTM F1960 CSA B137.5 NSF-61 NSF-14 | IAPMO-ES ICC-ES-PMG cNSFus-pw-G U.P.Code |
| In addition, the following parts have additional codes, standards, or listings: | | | | |
| ProPEX 1" Copper Branch Manifold with 1/2" ProPEX LF brass outlets, 4 outlets | LF2801050 | UMC | | |
| ProPEX 1" Copper Branch Manifold with 1/2" ProPEX LF brass outlets, 6 outlets | LF2811050 | UMC | | |
| ProPEX 1" Copper Branch Manifold with 1/2" ProPEX LF brass outlets, 10 outlets | LF2831050 | UMC | | |
| ProPEX 1" Copper Branch Manifold with 1/2" ProPEX LF brass outlets, 12 outlets | LF2841050 | UMC | | |

| Installation | Related applications |
|---|--|
| Use any product designed to mount 1" copper pipe as a mounting bracket. Any bend within 6 inches of the ProPEX connection to the manifold requires the use of a Tube Talon (F7050750) or Bend Support (A5110500 and A5150500). Refer to the Uponor Commercial Piping Pocket Guide, Uponor AquaSAFE™ Residential Fire Sprinkler Installation Guide or the Uponor Radiant Installation Handbook for additional information. | PEX-a Plumbing Systems Residential fire safety systems Radiant Heating and Cooling Systems |

| Notes |
|--|
| Maximum Flow Rate at 5 fps: 12.8 gpm Maximum Flow Rate at 8 fps: 20.5 gpm |

| Footnotes | | Contact information | |
|-----------|--|------------------------|-------------------------|
| - | | Uponor Inc. | Uponor Ltd. |
| | | 5925 148th Street West | 6510 Kennedy Road |
| | | Apple Valley, MN 55124 | Mississauga, ON L5T 2X4 |
| | | T 800.321.4739 | T 888.594.7726 |
| | | F 952.891.2008 | F 800.638.9517 |