

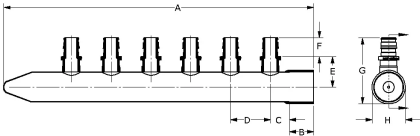
ProPEX (type L) copper branch manifolds

Project information	
Job name:	Location:
Engineer:	Date submitted:
Contractor:	Submitted by:
Manufacturer's representative:	Approved by:

Technical data	
Material	Copper
Subcomponent Material	Copper, LF Brass
Manifold size	1 inch
End type 1	ProPEX 1/2"
End type 2	Sweat 1"
Temp/pressure ratings	73 °F (23 °C) at 160 psi (11 bar) 180 °F (82 °C) at 100 psi (6.9 bar) 200 °F (93 °C) at 80 psi (5.5 bar) 210 °F (99 °C) at 149 psi (10.3 bar)
Max. fluid flow rate	21 gpm
Prop 65 label required?	Yes
Product information and application use	

The Uponor 1" Copper Branch Manifold with 1/2" ProPEX® Lead-free (LF) Outlets is used for hot and cold domestic potable-water distribution systems.1 The manifold has a 1" copper sweat fitting adapter supply connection. All outlets are configured with 1/2" ProPEX LF brass connections.

Note: Temperature and pressure ratings stated are hydrostatic ratings. For domestic hot-water (DHW) and DHW recirculation installations, operating conditions should not exceed 140°F (60°C) at 80 psi (5.5 bar) in accordance with ASTM F2023. For additional information regarding application-specific temperature and pressure ratings, refer to the Uponor PEX Piping Systems Design and Installation Manual.



Part name	Part no.	A [inch]	B [inch]	C [inch]	D [inch]	E [inch]	F [inch]	G [inch]	H [inch]	Weight per UOM [lbs/UOM]
ProPEX 1" Copper Branch Manifold with 1/2" ProPEX LF brass outlets, 4 outlets	LF2801050	8.675	0.987	0.639	1.5	1.143	0.709	2.479	1.256	0.8
ProPEX 1" Copper Branch Manifold with 1/2" ProPEX LF brass outlets, 6 outlets	LF2811050	11.675	0.987	0.639	1.5	1.143	0.709	2.479	1.256	1.1
ProPEX 1" Copper Branch Manifold with 1/2" ProPEX LF brass outlets, 8 outlets	LF2821050	14.675	0.987	0.639	1.5	1.143	0.709	2.479	1.256	1.4
ProPEX 1" Copper Branch Manifold with 1/2" ProPEX LF brass outlets, 10 outlets	LF2831050	17.675	0.987	0.639	1.5	1.143	0.709	2.479	1.256	1.7
ProPEX 1" Copper Branch Manifold with 1/2" ProPEX LF brass outlets, 12 outlets	LF2841050	20.675	0.987	0.639	1.5	1.143	0.709	2.479	1.256	1.9

Part name	Part no.	Codes	Standards	Listings
ProPEX (type L) copper branch manifolds	All	UPC IBC IRC IPC NPC of Canada NSPC IMC	NSF-372 ASTM F877 ASTM F1960 CSA B137.5 NSF-61 NSF-14	IAPMO-ES ICC-ES-PMG cNSFus-pw-G U.P.Code
In addition, the following parts have additional codes, standards, or listings:				
ProPEX 1" Copper Branch Manifold with 1/2" ProPEX LF brass outlets, 4 outlets	LF2801050	UMC		
ProPEX 1" Copper Branch Manifold with 1/2" ProPEX LF brass outlets, 6 outlets	LF2811050	UMC		
ProPEX 1" Copper Branch Manifold with 1/2" ProPEX LF brass outlets, 10 outlets	LF2831050	UMC		
ProPEX 1" Copper Branch Manifold with 1/2" ProPEX LF brass outlets, 12 outlets	LF2841050	UMC		

Installation	Related applications
Use any product designed to mount 1" copper pipe as a mounting bracket. Any bend within 6 inches of the ProPEX connection to the manifold requires the use of a Tube Talon (F7050750) or Bend Support (A5110500 and A5150500). Refer to the Uponor Commercial Piping Pocket Guide, Uponor AquaSAFE™ Residential Fire Sprinkler Installation Guide or the Uponor Radiant Installation Handbook for additional information.	PEX-a Plumbing Systems Residential fire safety systems Radiant Heating and Cooling Systems

Notes
Maximum Flow Rate at 5 fps: 12.8 gpm Maximum Flow Rate at 8 fps: 20.5 gpm

Footnotes		Contact information	
-		Uponor Inc.	Uponor Ltd.
		5925 148th Street West	6510 Kennedy Road
		Apple Valley, MN 55124	Mississauga, ON L5T 2X4
		T 800.321.4739	T 888.594.7726
		F 952.891.2008	F 800.638.9517