

# ProPEX lead-free (LF) brass sweat adapters

## Project information

|                                |                 |
|--------------------------------|-----------------|
| Job name:                      | Location:       |
| Engineer:                      | Date submitted: |
| Contractor:                    | Submitted by:   |
| Manufacturer's representative: | Approved by:    |

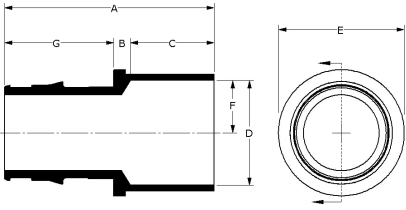
## Technical data

|                         |  |
|-------------------------|--|
| Material                | LF Brass   |
| Temp/pressure ratings   | 73 °F (23 °C) at 160 psi (11 bar)<br>180 °F (82 °C) at 100 psi (6.9 bar)<br>200 °F (93 °C) at 80 psi (5.5 bar) |
| Prop 65 label required? | Yes  |

## Product information and application use

ProPEX® lead-free (LF) brass sweat adapters transition Uponor PEX tubing to copper pipe for use in hot and cold domestic potable water systems, residential fire safety and hydronic radiant heating and cooling systems. 1 These adapters are safe for direct burial in soil.

Note: Temperature and pressure ratings stated are hydrostatic ratings. For domestic hot-water (DHW) and DHW recirculation installations, operating conditions should not exceed 140°F (60°C) at 80 psi (5.5 bar) in accordance with ASTM F2023. For additional information regarding application-specific temperature and pressure ratings, refer to the Uponor PEX Piping Systems Design and Installation Manual.



| Part name   | Part no.  | A<br>[inch] | B<br>[inch] | C<br>[inch] | D<br>[inch] | E<br>[inch] | F<br>[inch] | G<br>[inch] | Cv    | Equivalent<br>length<br>through<br>[ft] | End<br>Type<br>1 |
|---|-----------|-------------|-------------|-------------|-------------|-------------|-------------|-------------|-------|---|------------------|
| ProPEX LF Brass Sweat Adapter, 3/8" PEX x 1/2" Copper     | LF4513850 | 1.32        | 0.229       | 0.5         | 0.629       | 0.719       | 0.315       | 0.591       | 5.7   | 2                                       | ProPEX 3/8"      |
| ProPEX LF Brass Sweat Adapter, 3/4" PEX x 3/4" Copper     | LF4517575 | 1.863       | 0.168       | 0.75        | 0.879       | 1.1         | 0.439       | 0.945       | 13.4  | 2.1                                     | ProPEX 3/4"      |
| ProPEX LF Brass Sweat Adapter, 1" PEX x 1" Copper         | LF4511010 | 2.268       | 0.177       | 0.91        | 1.13        | 1.36        | 0.565       | 1.181       | 22.1  | 2.4                                     | ProPEX 1"        |
| ProPEX LF Brass Sweat Adapter, 1 1/4" PEX x 1 1/4" Copper | LF4511313 | 2.608       | 0.193       | 0.97        | 1.38        | 1.64        | 0.69        | 1.445       | 34    | 3.9                                     | ProPEX 1-1/4"    |
| ProPEX LF Brass Sweat Adapter, 1/2" PEX x 3/4" Copper     | LF4515075 | 1.634       | 0.175       | 0.75        | 0.879       | 0.987       | 0.439       | 0.709       | 5.1   | 2.7                                     | ProPEX 1/2"      |
| ProPEX LF Brass Sweat Adapter, 1/2" PEX x 1/2" Copper     | LF4515050 | 1.368       | 0.159       | 0.5         | 0.629       | 0.77        | 0.315       | 0.709       | 5.7   | 2                                       | ProPEX 1/2"      |
| ProPEX LF Brass Sweat Adapter, 3/4" PEX x 1/2" Copper     | LF4517550 | 1.674       | 0.229       | 0.5         | 0.629       | 1.1         | 0.315       | 0.945       | 8.8   | 1.4                                     | ProPEX 3/4"      |
| ProPEX LF Brass Sweat Adapter, 3/4" PEX x 1" Copper       | LF4517510 | 2.094       | 0.239       | 0.91        | 1.13        | 1.256       | 0.565       | 0.945       | 10.9  | 3.7                                     | ProPEX 3/4"      |
| ProPEX LF Brass Sweat Adapter, 1 1/2" PEX x 1 1/2" Copper | LF4511515 | 3.062       | 0.268       | 1.09        | 1.63        | 1.85        | 0.815       | 1.704       | 45.5  | 4.3                                     | ProPEX 1-1/2"    |
| ProPEX LF Brass Sweat Adapter, 2" PEX x 2" Copper         | LF4512020 | 3.73        | 0.243       | 1.34        | 2.13        | 2.6         | 1.065       | 2.147       | 83.6  | 5.3                                     | ProPEX 2"        |
| ProPEX LF Brass Sweat Adapter, 2 1/2" PEX x 2 1/2" Copper | LF4512525 | 4.58        | 0.28        | 1.47        | 2.63        | 3.36        | 1.315       | 2.83        | 136.2 | 6.89                                    | ProPEX 2-1/2"    |
| ProPEX LF Brass Sweat Adapter, 3" PEX x 3" Copper         | LF4513030 | 5.33        | 0.29        | 1.66        | 3.13        | 3.79        | 1.565       | 3.38        | 189.1 | 8.79                                    | ProPEX 3"        |

| Part name   | Part no.  | End Type 2   | Weight per UOM [lbs/UOM] |
|---|-----------|--------------|--------------------------|
| ProPEX LF Brass Sweat Adapter, 3/8" PEX x 1/2" Copper     | LF4513850 | Sweat 1/2"   | 0.05                     |
| ProPEX LF Brass Sweat Adapter, 3/4" PEX x 3/4" Copper     | LF4517575 | Sweat 3/4"   | 0.11                     |
| ProPEX LF Brass Sweat Adapter, 1" PEX x 1" Copper         | LF4511010 | Sweat 1"     | 0.2                      |
| ProPEX LF Brass Sweat Adapter, 1 1/4" PEX x 1 1/4" Copper | LF4511313 | Sweat 1-1/4" | 0.35                     |
| ProPEX LF Brass Sweat Adapter, 1/2" PEX x 3/4" Copper     | LF4515075 | Sweat 3/4"   | 0.09                     |
| ProPEX LF Brass Sweat Adapter, 1/2" PEX x 1/2" Copper     | LF4515050 | Sweat 1/2"   | 0.05                     |
| ProPEX LF Brass Sweat Adapter, 3/4" PEX x 1/2" Copper     | LF4517550 | Sweat 1/2"   | 0.1                      |
| ProPEX LF Brass Sweat Adapter, 3/4" PEX x 1" Copper       | LF4517510 | Sweat 1"     | 0.17                     |
| ProPEX LF Brass Sweat Adapter, 1 1/2" PEX x 1 1/2" Copper | LF4511515 | Sweat 1-1/2" | 0.5                      |
| ProPEX LF Brass Sweat Adapter, 2" PEX x 2" Copper         | LF4512020 | Sweat 2"     | 1                        |
| ProPEX LF Brass Sweat Adapter, 2 1/2" PEX x 2 1/2" Copper | LF4512525 | Sweat 2-1/2" | 1.9                      |

| ProPEX LF Brass Sweat Adapter, 3" PEX x 3" Copper                               |           | LF4513030                                  | Sweat 3"  | 2.85                         |
|---|-----------|--|---|------------------------------|
| Part name   | Part no.  | Codes                                      | Standards   | Listings                     |
| ProPEX lead-free (LF) brass sweat adapters                                      | All       | UPC IBC IRC IPC NPC of Canada UMC NSPC IMC | NSF-372 ASTM F877 ASTM F1960 CSA B137.5 NSF-61 NSF-14 | IAPMO-ES ICC-ES-PMG U.P.Code |
| In addition, the following parts have additional codes, standards, or listings: |           |  |   |                              |
| ProPEX LF Brass Sweat Adapter, 3/8" PEX x 1/2" Copper                           | LF4513850 |  |   | cNSFus-pw-G                  |
| ProPEX LF Brass Sweat Adapter, 3/4" PEX x 3/4" Copper                           | LF4517575 |  | UL 1821   | cNSFus-pw-fs-G               |
| ProPEX LF Brass Sweat Adapter, 1" PEX x 1" Copper                               | LF4511010 |  | UL 1821   | cNSFus-pw-fs-G               |
| ProPEX LF Brass Sweat Adapter, 1 1/4" PEX x 1 1/4" Copper                       | LF4511313 |  | UL 1821   | cNSFus-pw-fs-G               |
| ProPEX LF Brass Sweat Adapter, 1/2" PEX x 3/4" Copper                           | LF4515075 |  |   | cNSFus-pw-G                  |
| ProPEX LF Brass Sweat Adapter, 1/2" PEX x 1/2" Copper                           | LF4515050 |  |   | cNSFus-pw-G                  |
| ProPEX LF Brass Sweat Adapter, 3/4" PEX x 1/2" Copper                           | LF4517550 |  |   | cNSFus-pw-G                  |
| ProPEX LF Brass Sweat Adapter, 3/4" PEX x 1" Copper                             | LF4517510 |  |   | cNSFus-pw-G                  |
| ProPEX LF Brass Sweat Adapter, 1 1/2" PEX x 1 1/2" Copper                       | LF4511515 |  |   | cNSFus-pw-G                  |
| ProPEX LF Brass Sweat Adapter, 2" PEX x 2" Copper                               | LF4512020 |  |   | cNSFus-pw-G                  |
| ProPEX LF Brass Sweat Adapter, 2 1/2" PEX x 2 1/2" Copper                       | LF4512525 |  |   | cNSFus-pw-G                  |
| ProPEX LF Brass Sweat Adapter, 3" PEX x 3" Copper                               | LF4513030 |  |   | cNSFus-pw-G                  |

| Installation   | Related applications                |
|--|-------------------------------------|
| Use the appropriate Uponor ProPEX rings for the tubing (sold separately). Do not solder within 18" of ProPEX fittings. Refer to the AquaPEX® Professional Plumbing Installation Guide, Radiant Floor Heating Installation Handbook or AquaSAFETM Residential Fire Sprinkler Installation Guide for additional information. | Radiant Heating and Cooling Systems |
|  | Permafrost Protection Systems       |
|  | Turf Conditioning Systems           |
|  | AquaSAFE™ Fire Safety Systems       |
|  |                                     |

| Footnotes | Contact information  |
|-----------|--|
| -         | <div> <div>           Uponor Inc.<br/>           5925 148th Street West<br/>           Apple Valley, MN 55124<br/>           T 800.321.4739<br/>           F 952.891.2008         </div> <div>           Uponor Ltd.<br/>           6510 Kennedy Road<br/>           Mississauga, ON L5T 2X4<br/>           T 888.594.7726<br/>           F 800.638.9517         </div> </div> |