

ProPEX lead-free (LF) brass sweat adapters

Project Information

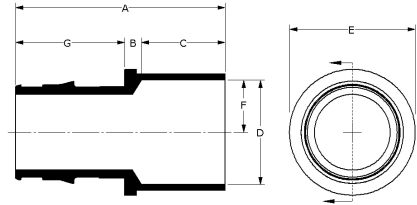
Job name:	Location:
Engineer:	Date submitted:
Contractor:	Submitted by:
Manufacturer's representative:	Approved by:

Technical data

Material	LF Brass
Temp/pressure ratings	73 °F (23 °C) at 160 psi (11 bar) 180 °F (82 °C) at 100 psi (6.9 bar) 200 °F (93 °C) at 80 psi (5.5 bar)
Prop 65 label required?	Yes

Product information and application use

ProPEX® lead-free (LF) brass sweat adapters transition Uponor PEX tubing to copper pipe for use in hot and cold domestic potable water systems, residential fire safety and hydronic radiant heating and cooling systems. 1 These adapters are safe for direct burial in soil.



Part name	Part no.	A [inch]	B [inch]	C [inch]	D [inch]	E [inch]	F [inch]	G [inch]	Cv	Weight per UOM [lbs/UOM]	Equivalent length through [ft]
ProPEX LF Brass Sweat Adapter, 1" PEX x 1" Copper	LF4511010	2.268	0.177	0.91	1.13	1.36	0.565	1.181	22.1	0.2	2.4
ProPEX LF Brass Sweat Adapter, 1 1/4" PEX x 1 1/4" Copper	LF4511313	2.608	0.193	0.97	1.38	1.64	0.69	1.445	34	0.35	3.9
ProPEX LF Brass Sweat Adapter, 1 1/2" PEX x 1 1/2" Copper	LF4511515	3.062	0.268	1.09	1.63	1.85	0.815	1.704	45.5	0.5	4.3
ProPEX LF Brass Sweat Adapter, 2" PEX x 2" Copper	LF4512020	3.73	0.243	1.34	2.13	2.6	1.065	2.147	83.6	1	5.3
ProPEX LF Brass Sweat Adapter, 2 1/2" PEX x 2 1/2" Copper	LF4512525	4.58	0.28	1.47	2.63	3.36	1.315	2.83	136.2	1.9	6.89
ProPEX LF Brass Sweat Adapter, 3" PEX x 3" Copper	LF4513030	5.33	0.29	1.66	3.13	3.79	1.565	3.38	189.1	2.85	8.79
ProPEX LF Brass Sweat Adapter, 3/8" PEX x 1/2" Copper	LF4513850	1.32	0.229	0.5	0.629	0.719	0.315	0.591	5.7	0.05	2
ProPEX LF Brass Sweat Adapter, 1/2" PEX x 1/2" Copper	LF4515050	1.368	0.159	0.5	0.629	0.77	0.315	0.709	5.7	0.05	2
ProPEX LF Brass Sweat Adapter, 1/2" PEX x 3/4" Copper	LF4515075	1.634	0.175	0.75	0.879	0.987	0.439	0.709	5.1	0.09	2.7
ProPEX LF Brass Sweat Adapter, 3/4" PEX x 1" Copper	LF4517510	2.094	0.239	0.91	1.13	1.256	0.565	0.945	10.9	0.17	3.7
ProPEX LF Brass Sweat Adapter, 3/4" PEX x 1/2" Copper	LF4517550	1.674	0.229	0.5	0.629	1.1	0.315	0.945	8.8	0.1	1.4
ProPEX LF Brass Sweat Adapter, 3/4" PEX x 3/4" Copper	LF4517575	1.863	0.168	0.75	0.879	1.1	0.439	0.945	13.4	0.11	2.1

Part name	Part no.	End Type 1	End Type 2
ProPEX LF Brass Sweat Adapter, 1" PEX x 1" Copper	LF4511010	ProPEX 1"	Sweat 1"
ProPEX LF Brass Sweat Adapter, 1 1/4" PEX x 1 1/4" Copper	LF4511313	ProPEX 1-1/4"	Sweat 1-1/4"
ProPEX LF Brass Sweat Adapter, 1 1/2" PEX x 1 1/2" Copper	LF4511515	ProPEX 1-1/2"	Sweat 1-1/2"
ProPEX LF Brass Sweat Adapter, 2" PEX x 2" Copper	LF4512020	ProPEX 2"	Sweat 2"
ProPEX LF Brass Sweat Adapter, 2 1/2" PEX x 2 1/2" Copper	LF4512525	ProPEX 2-1/2"	Sweat 2-1/2"
ProPEX LF Brass Sweat Adapter, 3" PEX x 3" Copper	LF4513030	ProPEX 3"	Sweat 3"
ProPEX LF Brass Sweat Adapter, 3/8" PEX x 1/2" Copper	LF4513850	ProPEX 3/8"	Sweat 1/2"
ProPEX LF Brass Sweat Adapter, 1/2" PEX x 1/2" Copper	LF4515050	ProPEX 1/2"	Sweat 1/2"

ProPEX LF Brass Sweat Adapter, 1/2" PEX x 3/4" Copper	LF4515075	ProPEX 1/2"	Sweat 3/4"
ProPEX LF Brass Sweat Adapter, 3/4" PEX x 1" Copper	LF4517510	ProPEX 3/4"	Sweat 1"
ProPEX LF Brass Sweat Adapter, 3/4" PEX x 1/2" Copper	LF4517550	ProPEX 3/4"	Sweat 1/2"
ProPEX LF Brass Sweat Adapter, 3/4" PEX x 3/4" Copper	LF4517575	ProPEX 3/4"	Sweat 3/4"

Installation	Related applications
Use the appropriate Uponor ProPEX rings for the tubing (sold separately). Do not solder within 18" of ProPEX fittings. Refer to the AquaPEX® Professional Plumbing Installation Guide, Radiant Floor Heating Installation Handbook or AquaSAFE™ Residential Fire Sprinkler Installation Guide for additional information.	Radiant Heating and Cooling Systems Permafrost Protection Systems Turf Conditioning Systems AquaSAFE™ Fire Safety Systems

Codes	Standards	Listings
UPC IBC IRC IPC NPC of Canada UMC NSPC IMC	NSF-372 ASTM F877 ASTM F1960 CSA B137.5 NSF-61 NSF-14*	IAPMO-ES ICC-ES-PMG cNSFus-pw-G U.P.Code*

Footnotes	Contact information		
- * Some SKUs in this family have additional codes, standards, or listings. Please see uponor.com for complete information.	<table border="0"> <tr> <td style="text-align: center;"> Uponor Inc. 5925 148th Street West Apple Valley, MN 55124 T 800.321.4739 F 952.891.2008 </td> <td style="text-align: center;"> Uponor Ltd. 6510 Kennedy Road Mississauga, ON L5T 2X4 T 888.594.7726 F 800.638.9517 </td> </tr> </table>	Uponor Inc. 5925 148th Street West Apple Valley, MN 55124 T 800.321.4739 F 952.891.2008	Uponor Ltd. 6510 Kennedy Road Mississauga, ON L5T 2X4 T 888.594.7726 F 800.638.9517
Uponor Inc. 5925 148th Street West Apple Valley, MN 55124 T 800.321.4739 F 952.891.2008	Uponor Ltd. 6510 Kennedy Road Mississauga, ON L5T 2X4 T 888.594.7726 F 800.638.9517		