

ProPEX lead-free (LF) brass to polyethylene (PE) couplings

Project information

Job name:	Location:
Engineer:	Date submitted:
Contractor:	Submitted by:
Manufacturer's representative:	Approved by:

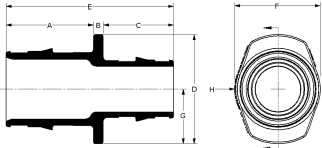
Technical data

End type 1	ProPEX 1"
End type 2	PE 1"
Temp/pressure ratings	73 °F (23 °C) at 160 psi (11 bar) 180 °F (82 °C) at 100 psi (6.9 bar) 200 °F (93 °C) at 80 psi (5.5 bar)
Prop 65 label required?	Yes

Product information and application use

ProPEX® Lead-free Brass to Polyethylene (PE) Coupling transitions PE pipe to Uponor AquaPEX® tubing.1 Approved for use in hot and cold domestic potable water systems and radiant heating systems, these couplings are also safe for direct burial in soil. Note: This product does not include the crimp ring for the PE side of the coupling.

Note: Temperature and pressure ratings stated are hydrostatic ratings. For domestic hot-water (DHW) and DHW recirculation installations, operating conditions should not exceed 140°F (60°C) at 80 psi (5.5 bar) in accordance with ASTM F2023. For additional information regarding application-specific temperature and pressure ratings, refer to the Uponor PEX Piping Systems Design and Installation Manual.



Part name	Part no.	Codes	Standards	Listings
ProPEX lead-free (LF) brass to polyethylene (PE) couplings	LF4591010	UPC IBC IRC IPC NPC of Canada UMC NSPC IMC	NSF-372 ASTM F877 ASTM F1960 CSA B137.5 NSF-61 NSF-14	IAPMO-ES ICC-ES-PMG cNSFus-pw-G U.P.Code

Installation

Use the appropriate ProPEX Ring (sold separately) for connecting PEX tubing. Use crimp ring to secure the PE tubing to the fitting. Refer to the AquaPEX Professional Plumbing Installation Guide or the Radiant Floor Heating Installation Handbook for additional information.

Related applications

- PEX-a Plumbing Systems
- Radiant Heating and Cooling Systems
- Permafrost Protection Systems
- Turf Conditioning Systems

Footnotes

-

Contact information

Uponor Inc.
5925 148th Street West
Apple Valley, MN 55124
T 800.321.4739
F 952.891.2008

Uponor Ltd.
6510 Kennedy Road
Mississauga, ON L5T 2X4
T 888.594.7726
F 800.638.9517