

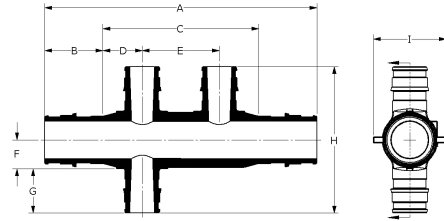
EP flow-through opposing-port multi-port tees

Project information

| | |
|--------------------------------|-----------------|
| Job name: | Location: |
| Engineer: | Date submitted: |
| Contractor: | Submitted by: |
| Manufacturer's representative: | Approved by: |

Technical data

| | |
|-------------------------|--|
| Material | Engineered Polymer |
| End type 1 | ProPEX 3/4" |
| End type 2 | ProPEX 3/4" |
| End type 3 | ProPEX 1/2" |
| End type 4 | ProPEX 1/2" |
| Temp/pressure ratings | 73 °F (23 °C) at 160 psi (11 bar) 180 °F (82 °C) at 100 psi (6.9 bar) 200 °F (93 °C) at 80 psi (5.5 bar) |
| Prop 65 label required? | No |



Product information and application use

Engineered polymer (EP) flow-through opposing-port multi-port tees feature 3/4" ProPEX® inlets with opposing 1/2" ProPEX branch outlets. The tees are designed for central location to facilitate piping in two directions

Note: Temperature and pressure ratings stated are hydrostatic ratings. For domestic hot-water (DHW) and DHW recirculation installations, operating conditions should not exceed 140°F (60°C) at 80 psi (5.5 bar) in accordance with ASTM F2023. For additional information regarding application-specific temperature and pressure ratings, refer to the Uponor PEX Piping Systems Design and Installation Manual.

| Part name | Part no. | A [inch] | B [inch] | C [inch] | D [inch] | E [inch] | F [inch] | G [inch] | H [inch] | I [inch] | Cv Through |
|---|----------|----------|----------|----------|----------|----------|----------|----------|----------|----------|------------|
| EP Flow-through Opposing-port Multi-port Tee, 3 (1/2") outlets, 3/4" x3/4" ProPEX | Q2337557 | 4.41 | 0.955 | 2.5 | 0.625 | 1.25 | 0.467 | 0.719 | 2.373 | 1.18 | 15.9 |
| EP Flow-through Opposing-port Multi-port Tee, 4 (1/2") outlets, 3/4" x3/4" ProPEX | Q2347557 | 4.41 | 0.955 | 2.5 | 0.625 | 1.25 | 0.467 | 0.719 | 2.373 | 1.18 | 16.9 |
| EP Flow-through Opposing-port Multi-port Tee, 6 (1/2") outlets, 3/4" x3/4" ProPEX | Q2367557 | 5.66 | 0.955 | 3.75 | 0.625 | 1.25 | 0.467 | 0.719 | 2.373 | 1.18 | 16.4 |

| Part name | Part no. | Equivalent length through [ft] | Weight per UOM [lbs/UOM] |
|---|----------|--------------------------------|--------------------------|
| EP Flow-through Opposing-port Multi-port Tee, 3 (1/2") outlets, 3/4" x3/4" ProPEX | Q2337557 | 1.57 | 0.07 |
| EP Flow-through Opposing-port Multi-port Tee, 4 (1/2") outlets, 3/4" x3/4" ProPEX | Q2347557 | 1.28 | 0.08 |
| EP Flow-through Opposing-port Multi-port Tee, 6 (1/2") outlets, 3/4" x3/4" ProPEX | Q2367557 | 1.32 | 0.11 |

| Part name | Part no. | Codes | Standards | Listings |
|---|----------|--|---|---|
| EP flow-through opposing-port multi-port tees | All | UPC IBC IRC IPC NPC of Canada UMC NSPC IMC | ASTM E814 ULC S115 ASTM F877 ASTM F1960 CSA B137.5 ULC S102.2 ASTM E119 UL 263 NSF/ANSI/CAN 61 ULC S101 NSF/ANSI 14 | IAPMO-ES HUD MR 1269 ICC-ES-PMG cNSFus-pw UL U.P.Code cQAlus P321 |

Installation

Use any product designed to mount 1" copper pipe as a mounting bracket. For more information, refer to the Uponor AquaPEX® Professional Plumbing Installation Guide.

Related applications

PEX-a Plumbing Systems

Footnotes

Contact information

-

Uponor Inc.
5925 148th Street West
Apple Valley, MN 55124
T 800.321.4739
F 952.891.2008

Uponor Ltd.
6510 Kennedy Road
Mississauga, ON L5T 2X4
T 888.594.7726
F 800.638.9517