

ProPEX swivel faucet adapters

Project Information

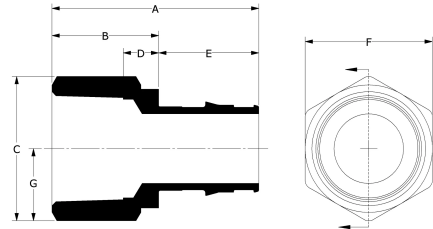
| | |
|--------------------------------|-----------------|
| Job name: | Location: |
| Engineer: | Date submitted: |
| Contractor: | Submitted by: |
| Manufacturer's representative: | Approved by: |

Technical data

| | |
|-----------------------|--|
| Material | Engineered Polymer |
| End type 1 | ProPEX 1/2" |
| End type 2 | NPSM 1/2" |
| Temp/pressure ratings | 73 °F (23 °C) at 160 psi (11 bar) 180 °F (82 °C) at 100 psi (6.9 bar) 200 °F (93 °C) at 80 psi (5.5 bar) |

Product Information and application use

The ProPEX® Engineered Plastic (EP) Swivel Faucet Adapter is available for use in hot and cold domestic potable water systems.1 One end is manufactured with the Uponor ProPEX Fitting for swivel connections to Uponor AquaPEX® tubing.



| Part name | Part no. | A [inch] | B [inch] | C [inch] | D [inch] | E [inch] | F [inch] | G [inch] | Weight per UOM [lbs/UOM] |
|---|----------|----------|----------|----------|----------|----------|----------|----------|--------------------------|
| ProPEX EP Swivel Faucet Adapter, 1/2" PEX x 1/2" NPSM | Q4360500 | 1.494 | 0.765 | 1.61 | 0.342 | 0.729 | 1.61 | 0.805 | 0.03 |

Installation

Use the appropriate Uponor ProPEX Ring for the tubing. For more information, refer to the Uponor Professional Plumbing Installation Guide.

Related applications

PEX-a Plumbing Systems

Codes

UPC|IBC|IRC|IPC|NPC of Canada|UMC|NSPC|IMC

Standards

ASTM E814|ULC S115|ASTM F877|ASTM F1960|CSA B137.5|ULC S102.2|ASTM E119|UL 263|NSF-61|ULC S101|NSF-14

Listings

IAPMO-ES|HUD MR 1269|ICC-ES-PMG|cNSFus-pw|U.P.Code|cQA|us P321

Footnotes

-

Contact information

Uponor Inc.
5925 148th Street West
Apple Valley, MN 55124
T 800.321.4739
F 952.891.2008

Uponor Ltd.
6510 Kennedy Road
Mississauga, ON L5T 2X4
T 888.594.7726
F 800.638.9517