

# ProPEX EP couplings

## Project information

Job name:	Location:
Engineer:	Date submitted:
Contractor:	Submitted by:
Manufacturer's representative:	Approved by:

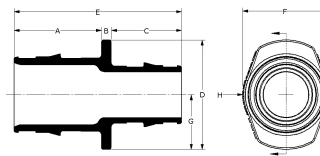
## Technical data

Material	Engineered Polymer
Temp/pressure ratings	73 °F (23 °C) at 160 psi (11 bar) 180 °F (82 °C) at 100 psi (6.9 bar) 200 °F (93 °C) at 80 psi (5.5 bar)

## Product information and application use

ProPEX® engineered polymer (EP) coupling is available for use in hot and cold domestic potable water distribution, residential fire safety and radiant heating and cooling systems. Each end of the coupling is manufactured with an Uponor ProPEX fitting for connections to Uponor AquaPEX® or Wirsbo hePEX™ tubing.1

Note: Temperature and pressure ratings stated are hydrostatic ratings. For domestic hot-water (DHW) and DHW recirculation installations, operating conditions should not exceed 140°F (60°C) at 80 psi (5.5 bar) in accordance with ASTM F2023. For additional information regarding application-specific temperature and pressure ratings, refer to the Uponor PEX Piping Systems Design and Installation Manual.



Part name	Part no.	A [inch]	B [inch]	C [inch]	D [inch]	E [inch]	F [inch]	G [inch]	H [inch]	Cv	Equivalent length through [ft]
ProPEX EP Coupling, 3/8" PEX x 3/8" PEX	Q4773838	0.601	0.125	0.601	0.631	1.327	0.631	0.315	0.315	-	0.8
ProPEX EP Coupling, 1/2" PEX x 1/2" PEX	Q4775050	0.722	0.125	0.722	0.87	1.569	0.695	0.435	0.348	8.3	0.8
ProPEX EP Coupling, 1/2" PEX x 3/4" PEX	Q4775075	0.723	0.117	0.959	1.22	1.799	0.98	0.61	0.49	5.2	2.6
ProPEX EP Coupling, 5/8" PEX X 5/8" PEX	Q4776363	0.879	0.119	0.879	1.01	1.877	0.88	0.505	0.44	-	2.7
ProPEX EP Coupling, 3/4" PEX x 3/4" PEX	Q4777575	0.955	0.125	0.955	1.22	2.035	0.965	0.61	0.49	19	0.9
ProPEX EP Coupling, 3/4" PEX x 1" PEX	Q4777510	0.961	0.125	1.19	1.48	2.276	1.165	0.74	0.59	12.5	2.7
ProPEX EP Coupling, 1" PEX x 1" PEX	Q4771010	1.191	0.125	1.191	1.48	2.507	1.165	0.74	0.59	33.8	0.9
ProPEX EP Coupling, 1 1/4" PEX x 3/4" PEX	Q4771307	1.459	0.15	0.963	1.74	2.573	1.38	0.87	0.69	10.9	3.6
ProPEX EP Coupling, 1 1/4" PEX x 1" PEX	Q4771310	1.459	0.15	1.198	1.74	2.807	1.38	0.87	0.69	22.3	2.6
ProPEX EP Coupling, 1 1/4" PEX x 1 1/4" PEX	Q4771313	1.459	0.15	1.459	1.74	3.069	1.38	0.87	0.69	53.3	1.1
ProPEX EP Coupling, 1 1/2" PEX x 3/4" PEX	Q4771507	1.719	0.15	0.965	1.92	2.834	1.53	0.96	0.765	10.8	3.5
ProPEX EP Coupling, 1 1/2" PEX x 1" PEX	Q4771510	1.719	0.15	1.178	1.92	3.048	1.52	0.96	0.76	19	4.3
ProPEX EP Coupling, 1 1/2" PEX x 1 1/4" PEX	Q4771513	1.719	0.15	1.461	1.92	3.33	1.53	0.96	0.765	33.9	3.7
ProPEX EP Coupling, 1 1/2" PEX x 1 1/2" PEX	Q4771515	1.719	0.15	1.719	1.92	3.588	1.53	0.96	0.765	69.5	1.4
ProPEX EP Coupling, 2" PEX x 1 1/2" PEX	Q4772015	2.164	0.25	1.726	2.7	4.14	2.2	1.35	1.1	45.2	4.59
ProPEX EP Coupling, 2" PEX x 2" PEX	Q4772020	2.164	0.25	2.164	2.7	4.578	2.2	1.35	1.1	107.8	-
ProPEX EP Coupling, 2 1/2" PEX x 1 1/4" PEX	Q4772513	2.84	0.257	1.469	3.6	4.566	2.8	1.8	1.4	29.3	5.4
ProPEX EP Coupling, 2 1/2" PEX x 1 1/2" PEX	Q4772515	2.84	0.25	1.734	3.6	4.824	2.8	1.82	1.4	35.9	7.5
ProPEX EP Coupling, 2 1/2" PEX x 2" PEX	Q4772520	2.84	0.25	2.172	3.6	5.262	2.8	1.82	1.4	82.6	5.4
ProPEX EP Coupling, 2 1/2" PEX x 2 1/2" PEX	Q4772525	2.84	0.25	2.84	3.6	5.931	2.8	1.82	1.4	219.1	1.7
ProPEX EP Coupling, 3" PEX x 2" PEX	Q4773020	3.391	0.25	2.177	4.2	5.819	3.3	2.12	1.65	73.4	7.2
ProPEX EP Coupling, 3" PEX x 2 1/2" PEX	Q4773025	3.391	0.25	2.846	4.2	6.487	3.3	2.12	1.65	136.2	7.1
ProPEX EP Coupling, 3" PEX x 3" PEX	Q4773030	3.391	0.25	3.391	4.2	7.033	3.3	2.12	1.65	320.6	1.9

Part name	Part no.	End Type 1	End Type 2	Prop 65 label required?	Weight per UOM [lbs/UOM]
ProPEX EP Coupling, 3/8" PEX x 3/8" PEX	Q4773838	ProPEX 3/8"	ProPEX 3/8"	-	0.01
ProPEX EP Coupling, 1/2" PEX x 1/2" PEX	Q4775050	ProPEX 1/2"	ProPEX 1/2"	-	0.01
ProPEX EP Coupling, 1/2" PEX x 3/4" PEX	Q4775075	ProPEX 1/2"	ProPEX 3/4"	-	0.03

ProPEX EP Coupling, 5/8" PEX X 5/8" PEX	Q4776363	ProPEX 5/8"	ProPEX 5/8"	-	0.01
ProPEX EP Coupling, 3/4" PEX x 3/4" PEX	Q4777575	ProPEX 3/4"	ProPEX 3/4"	No	0.02
ProPEX EP Coupling, 3/4" PEX x 1" PEX	Q4777510	ProPEX 3/4"	ProPEX 1"	-	0.04
ProPEX EP Coupling, 1" PEX x 1" PEX	Q4771010	ProPEX 1"	ProPEX 1"	-	0.04
ProPEX EP Coupling, 1 1/4" PEX x 3/4" PEX	Q4771307	ProPEX 1-1/4"	ProPEX 3/4"	-	0.05
ProPEX EP Coupling, 1 1/4" PEX x 1" PEX	Q4771310	ProPEX 1-1/4"	ProPEX 1"	-	0.06
ProPEX EP Coupling, 1 1/4" PEX x 1 1/4" PEX	Q4771313	ProPEX 1-1/4"	ProPEX 1-1/4"	-	0.07
ProPEX EP Coupling, 1 1/2" PEX x 3/4" PEX	Q4771507	ProPEX 1-1/2"	ProPEX 3/4"	-	0.07
ProPEX EP Coupling, 1 1/2" PEX x 1" PEX	Q4771510	ProPEX 1-1/2"	ProPEX 1"	-	0.08
ProPEX EP Coupling, 1 1/2" PEX x 1 1/4" PEX	Q4771513	ProPEX 1-1/2"	ProPEX 1-1/4"	-	0.09
ProPEX EP Coupling, 1 1/2" PEX x 1 1/2" PEX	Q4771515	ProPEX 1-1/2"	ProPEX 1-1/2"	-	0.1
ProPEX EP Coupling, 2" PEX x 1 1/2" PEX	Q4772015	ProPEX 2"	ProPEX 1-1/2"	-	0.19
ProPEX EP Coupling, 2" PEX x 2" PEX	Q4772020	ProPEX 2"	ProPEX 2"	-	-
ProPEX EP Coupling, 2 1/2" PEX x 1 1/4" PEX	Q4772513	ProPEX 2-1/2"	ProPEX 1-1/4"	-	0.34
ProPEX EP Coupling, 2 1/2" PEX x 1 1/2" PEX	Q4772515	ProPEX 2-1/2"	ProPEX 1-1/2"	-	0.35
ProPEX EP Coupling, 2 1/2" PEX x 2" PEX	Q4772520	ProPEX 2-1/2"	ProPEX 2"	-	0.4
ProPEX EP Coupling, 2 1/2" PEX x 2 1/2" PEX	Q4772525	ProPEX 2-1/2"	ProPEX 2-1/2"	-	0.51
ProPEX EP Coupling, 3" PEX x 2" PEX	Q4773020	ProPEX 3"	ProPEX 2"	-	0.6
ProPEX EP Coupling, 3" PEX x 2 1/2" PEX	Q4773025	ProPEX 3"	ProPEX 2-1/2"	-	0.71
ProPEX EP Coupling, 3" PEX x 3" PEX	Q4773030	ProPEX 3"	ProPEX 3"	-	0.85

Part name	Part no.	Codes	Standards	Listings
ProPEX EP couplings	All	IMC UPC IBC IRC IPC NPC of Canada UMC NSPC	ASTM F1960 ASTM E119/UL 263 ASTM E84 ASTM E814/ULC S115 ASTM F877 CSA B137.5 ULC S102.2 ULC S101	IAPMO-ES ICC-ES-PMG UL U.P.Code cQAlus P321 HUD MR 1269
In addition, the following parts have additional codes, standards, or listings:				
ProPEX EP Coupling, 3/8" PEX x 3/8" PEX	Q4773838		NSF/ANSI/CAN 61 NSF/ANSI 14	cNSFus-pw
ProPEX EP Coupling, 1/2" PEX x 1/2" PEX	Q4775050		NSF/ANSI/CAN 61 NSF/ANSI 14	cNSFus-pw
ProPEX EP Coupling, 1/2" PEX x 3/4" PEX	Q4775075		NSF/ANSI/CAN 61 NSF/ANSI 14	cNSFus-pw
ProPEX EP Coupling, 5/8" PEX X 5/8" PEX	Q4776363		NSF-61 NSF-14	cNSFus-pw
ProPEX EP Coupling, 3/4" PEX x 3/4" PEX	Q4777575		UL 1821 NSF/ANSI/CAN 61 NSF/ANSI 14	cNSFus-pw-fs
ProPEX EP Coupling, 3/4" PEX x 1" PEX	Q4777510		UL 1821 NSF/ANSI/CAN 61 NSF/ANSI 14	cNSFus-pw-fs
ProPEX EP Coupling, 1" PEX x 1" PEX	Q4771010		UL 1821 NSF/ANSI/CAN 61 NSF/ANSI 14	cNSFus-pw-fs
ProPEX EP Coupling, 1 1/4" PEX x 3/4" PEX	Q4771307		UL 1821 NSF/ANSI/CAN 61 NSF/ANSI 14	cNSFus-pw-fs
ProPEX EP Coupling, 1 1/4" PEX x 1" PEX	Q4771310		UL 1821 NSF/ANSI/CAN 61 NSF/ANSI 14	cNSFus-pw-fs
ProPEX EP Coupling, 1 1/4" PEX x 1 1/4" PEX	Q4771313		UL 1821 NSF/ANSI/CAN 61 NSF/ANSI 14	cNSFus-pw-fs
ProPEX EP Coupling, 1 1/2" PEX x 3/4" PEX	Q4771507		NSF/ANSI/CAN 61 NSF/ANSI 14	cNSFus-pw
ProPEX EP Coupling, 1 1/2" PEX x 1" PEX	Q4771510		NSF/ANSI/CAN 61 NSF/ANSI 14	cNSFus-pw
ProPEX EP Coupling, 1 1/2" PEX x 1 1/4" PEX	Q4771513		NSF/ANSI/CAN 61 NSF/ANSI 14	cNSFus-pw
ProPEX EP Coupling, 1 1/2" PEX x 1 1/2" PEX	Q4771515		NSF/ANSI/CAN 61 NSF/ANSI 14	cNSFus-pw
ProPEX EP Coupling, 2" PEX x 1 1/2" PEX	Q4772015		NSF/ANSI/CAN 61 NSF/ANSI 14	cNSFus-pw
ProPEX EP Coupling, 2" PEX x 2" PEX	Q4772020		NSF/ANSI/CAN 61 NSF/ANSI 14	cNSFus-pw
ProPEX EP Coupling, 2 1/2" PEX x 1 1/4" PEX	Q4772513		NSF/ANSI/CAN 61 NSF/ANSI 14	cNSFus-pw
ProPEX EP Coupling, 2 1/2" PEX x 1 1/2" PEX	Q4772515		NSF/ANSI/CAN 61 NSF/ANSI 14	cNSFus-pw
ProPEX EP Coupling, 2 1/2" PEX x 2" PEX	Q4772520		NSF/ANSI/CAN 61 NSF/ANSI 14	cNSFus-pw
ProPEX EP Coupling, 2 1/2" PEX x 2 1/2" PEX	Q4772525		NSF/ANSI/CAN 61 NSF/ANSI 14	cNSFus-pw
ProPEX EP Coupling, 3" PEX x 2" PEX	Q4773020		NSF/ANSI/CAN 61 NSF/ANSI 14	cNSFus-pw
ProPEX EP Coupling, 3" PEX x 2 1/2" PEX	Q4773025		NSF/ANSI/CAN 61 NSF/ANSI 14	cNSFus-pw
ProPEX EP Coupling, 3" PEX x 3" PEX	Q4773030		NSF-61 NSF-14	cNSFus-pw

#### Installation

Use ProPEX rings to make the fitting. Refer to the Uponor Piping Pocket Guide, Radiant Floor Heating Installation Handbook or AquaSAFE™ Residential Fire Sprinkler Installation Guide for more information.

#### Related applications

PEX-a Plumbing Systems  
Hydronic Radiant Heating and Cooling Systems  
Permafrost Protection Systems  
Turf Conditioning Systems  
AquaSAFE™ Fire Safety Systems

#### Footnotes

#### Contact information

Uponor Inc.  
5925 148th Street West  
Apple Valley, MN 55124  
T 800.321.4739  
F 952.891.2008

Uponor Ltd.  
6510 Kennedy Road  
Mississauga, ON L5T 2X4  
T 888.594.7726  
F 800.638.9517