

# ProPEX brass fitting adapters

## Project Information

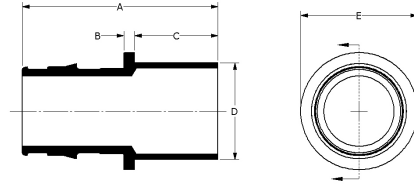
|                                |                 |
|--------------------------------|-----------------|
| Job name:                      | Location:       |
| Engineer:                      | Date submitted: |
| Contractor:                    | Submitted by:   |
| Manufacturer's representative: | Approved by:    |

## Technical data

|                         |  |
|-------------------------|--|
| Material                | Brass  |
| Temp/pressure ratings   | 73 °F (23 °C) at 160 psi (11 bar)<br>180 °F (82 °C) at 100 psi (6.9 bar)<br>200 °F (93 °C) at 80 psi (5.5 bar) |
| Prop 65 label required? | Yes  |

## Product information and application use

ProPEX® Brass Fitting Adapters transition crosslinked polyethylene (PEX) tubing to copper fittings. 1 These adapters are approved for use in hydronic radiant heating systems. One end of the adapter is manufactured with the Uponor ProPEX Fitting for connections to Wirsbo hePEX™ tubing. These adapters are safe for direct burial in soil.



| Part name  | Part no. | A [inch] | B [inch] | C [inch] | D [inch] | E [inch] | F [inch] | G [inch] | End Type 1    | End Type 2   | Cv    |
|--|----------|----------|----------|----------|----------|----------|----------|----------|---------------|--------------|-------|
| ProPEX Brass Fitting Adapter, 1/2" PEX x 1/2" Copper     | Q5505050 | 1.394    | 0.125    | 0.56     | 0.625    | 0.77     | 0.313    | 0.709    | ProPEX 1/2"   | Sweat 1/2"   | 7.7   |
| ProPEX Brass Fitting Adapter, 5/8" PEX x 1/2" Copper     | Q4506350 | 1.551    | 0.125    | 0.56     | 0.624    | 0.94     | 0.312    | 0.866    | ProPEX 5/8"   | Sweat 1/2"   | -     |
| ProPEX Brass Fitting Adapter, 5/8" PEX x 3/4" Copper     | Q4506375 | 1.801    | 0.125    | 0.81     | 0.874    | 0.94     | 0.437    | 0.866    | ProPEX 5/8"   | Sweat 3/4"   | -     |
| ProPEX Brass Fitting Adapter, 3/4" PEX x 1/2" Copper     | Q5507550 | 1.63     | 0.125    | 0.56     | 0.624    | 1.1      | 0.312    | 0.945    | ProPEX 3/4"   | Sweat 1/2"   | 8.8   |
| ProPEX Brass Fitting Adapter, 3/4" PEX x 3/4" Copper     | Q5507575 | 1.88     | 0.125    | 0.81     | 0.874    | 1.1      | 0.437    | 0.945    | ProPEX 3/4"   | Sweat 3/4"   | 15.7  |
| ProPEX Brass Fitting Adapter, 3/4" PEX x 1" Copper       | Q5507510 | 2.04     | 0.11     | 0.985    | 1.125    | 1.15     | 0.563    | 0.945    | ProPEX 3/4"   | Sweat 1"     | 11.4  |
| ProPEX Brass Fitting Adapter, 1" PEX x 1" Copper         | Q5501010 | 2.276    | 0.125    | 0.97     | 1.125    | 1.36     | 0.563    | 1.181    | ProPEX 1"     | Sweat 1"     | 30.5  |
| ProPEX Brass Fitting Adapter, 1 1/4" PEX x 1 1/4" Copper | Q5501313 | 2.6      | 0.125    | 1.03     | 1.375    | 1.72     | 0.687    | 1.445    | ProPEX 1-1/4" | Sweat 1-1/4" | 34    |
| ProPEX Brass Fitting Adapter, 1 1/2" PEX x 1 1/2" Copper | Q5501515 | 2.989    | 0.125    | 1.16     | 1.625    | 1.9      | 0.813    | 1.704    | ProPEX 1-1/2" | Sweat 1-1/2" | 63.7  |
| ProPEX Brass Fitting Adapter, 2" PEX x 2" Copper         | Q5502020 | 3.807    | 0.25     | 1.41     | 2.125    | 2.68     | 1.063    | 2.147    | ProPEX 2"     | Sweat 2"     | 150.7 |

| Part name  | Part no. | Equivalent length through [ft] | Weight per UOM [lbs/UOM] |
|--|----------|--------------------------------|--------------------------|
| ProPEX Brass Fitting Adapter, 1/2" PEX x 1/2" Copper     | Q5505050 | 1                              | 0.06                     |
| ProPEX Brass Fitting Adapter, 5/8" PEX x 1/2" Copper     | Q4506350 | -                              | 0.06                     |
| ProPEX Brass Fitting Adapter, 5/8" PEX x 3/4" Copper     | Q4506375 | -                              | 0.11                     |
| ProPEX Brass Fitting Adapter, 3/4" PEX x 1/2" Copper     | Q5507550 | 1.5                            | 0.09                     |
| ProPEX Brass Fitting Adapter, 3/4" PEX x 3/4" Copper     | Q5507575 | 1.5                            | 0.11                     |
| ProPEX Brass Fitting Adapter, 3/4" PEX x 1" Copper       | Q5507510 | 3.1                            | 0.14                     |
| ProPEX Brass Fitting Adapter, 1" PEX x 1" Copper         | Q5501010 | 1.3                            | 0.19                     |
| ProPEX Brass Fitting Adapter, 1 1/4" PEX x 1 1/4" Copper | Q5501313 | 3.8                            | 0.33                     |
| ProPEX Brass Fitting Adapter, 1 1/2" PEX x 1 1/2" Copper | Q5501515 | 1.8                            | 0.46                     |
| ProPEX Brass Fitting Adapter, 2" PEX x 2" Copper         | Q5502020 | 0.8                            | 1.08                     |

| Part name   | Part no. | Codes                         | Standards                       | Listings                       |
|---|----------|-------------------------------|---------------------------------|--------------------------------|
| ProPEX brass fitting adapters   | All      | IMC IBC IRC NPC of Canada UMC | ASTM F1960 CSA B137.5 ASTM F877 | IAPMO-ES ICC-ES-PMG cNSFus-rfh |
| In addition, the following parts have additional codes, standards, or listings: |          |                               |                                 |                                |
| ProPEX Brass Fitting Adapter, 1/2" PEX x 1/2" Copper                            | Q5505050 |                               | NSF/ANSI 14                     |                                |
| ProPEX Brass Fitting Adapter, 5/8" PEX x 1/2" Copper                            | Q4506350 |                               | NSF-14                          |                                |
| ProPEX Brass Fitting Adapter, 5/8" PEX x 3/4" Copper                            | Q4506375 |                               | NSF/ANSI 14                     |                                |
| ProPEX Brass Fitting Adapter, 3/4" PEX x 1/2" Copper                            | Q5507550 |                               | NSF/ANSI 14                     |                                |
| ProPEX Brass Fitting Adapter, 3/4" PEX x 3/4" Copper                            | Q5507575 |                               | NSF-14                          |                                |
| ProPEX Brass Fitting Adapter, 3/4" PEX x 1" Copper                              | Q5507510 |                               | NSF/ANSI 14                     |                                |
| ProPEX Brass Fitting Adapter, 1" PEX x 1" Copper                                | Q5501010 |                               | NSF-14                          |                                |
| ProPEX Brass Fitting Adapter, 1 1/4" PEX x 1 1/4" Copper                        | Q5501313 |                               | NSF-14                          |                                |
| ProPEX Brass Fitting Adapter, 1 1/2" PEX x 1 1/2" Copper                        | Q5501515 |                               | NSF-14                          |                                |
| ProPEX Brass Fitting Adapter, 2" PEX x 2" Copper                                | Q5502020 |                               | NSF/ANSI 14                     |                                |

| Installation  | Related applications                |
|---|-------------------------------------|
| ProPEX Tool and ProPEX Rings (sold separately) are required for connecting the PEX tubing. Do not solder within 18 inches of the ProPEX Fitting. For more information, refer to the Uponor Radiant Floor Heating Installation Handbook. | Radiant Heating and Cooling Systems |

| Footnotes | Contact information   |
|-----------|---|
| -         | <p>Uponor Inc.<br/>5925 148th Street West<br/>Apple Valley, MN 55124<br/>T 800.321.4739<br/>F 952.891.2008</p> <p>Uponor Ltd.<br/>6510 Kennedy Road<br/>Mississauga, ON L5T 2X4<br/>T 888.594.7726<br/>F 800.638.9517</p> |