

ProPEX brass fitting adapters

Project information

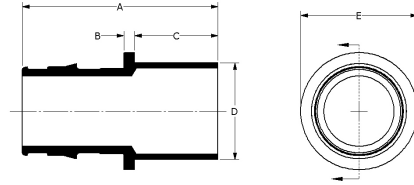
Job name:	Location:
Engineer:	Date submitted:
Contractor:	Submitted by:
Manufacturer's representative:	Approved by:

Technical data

Material	Brass
Temp/pressure ratings	73 °F (23 °C) at 160 psi (11 bar) 180 °F (82 °C) at 100 psi (6.9 bar) 200 °F (93 °C) at 80 psi (5.5 bar)
Prop 65 label required?	Yes

Product information and application use

ProPEX® Brass Fitting Adapters transition crosslinked polyethylene (PEX) tubing to copper fittings. 1 These adapters are approved for use in hydronic radiant heating systems. One end of the adapter is manufactured with the Uponor ProPEX Fitting for connections to Wirsbo hePEX™ tubing. These adapters are safe for direct burial in soil.



Part name	Part no.	A [inch]	B [inch]	C [inch]	D [inch]	E [inch]	F [inch]	G [inch]	End Type 1	End Type 2	Cv
ProPEX Brass Fitting Adapter, 1/2" PEX x 1/2" Copper	Q5505050	1.394	0.125	0.56	0.625	0.77	0.313	0.709	ProPEX 1/2"	Sweat 1/2"	7.7
ProPEX Brass Fitting Adapter, 5/8" PEX x 1/2" Copper	Q4506350	1.551	0.125	0.56	0.624	0.94	0.312	0.866	ProPEX 5/8"	Sweat 1/2"	-
ProPEX Brass Fitting Adapter, 5/8" PEX x 3/4" Copper	Q4506375	1.801	0.125	0.81	0.874	0.94	0.437	0.866	ProPEX 5/8"	Sweat 3/4"	-
ProPEX Brass Fitting Adapter, 3/4" PEX x 1/2" Copper	Q5507550	1.63	0.125	0.56	0.624	1.1	0.312	0.945	ProPEX 3/4"	Sweat 1/2"	8.8
ProPEX Brass Fitting Adapter, 3/4" PEX x 3/4" Copper	Q5507575	1.88	0.125	0.81	0.874	1.1	0.437	0.945	ProPEX 3/4"	Sweat 3/4"	15.7
ProPEX Brass Fitting Adapter, 3/4" PEX x 1" Copper	Q5507510	2.04	0.11	0.985	1.125	1.15	0.563	0.945	ProPEX 3/4"	Sweat 1"	11.4
ProPEX Brass Fitting Adapter, 1" PEX x 1" Copper	Q5501010	2.276	0.125	0.97	1.125	1.36	0.563	1.181	ProPEX 1"	Sweat 1"	30.5
ProPEX Brass Fitting Adapter, 1 1/4" PEX x 1 1/4" Copper	Q5501313	2.6	0.125	1.03	1.375	1.72	0.687	1.445	ProPEX 1-1/4"	Sweat 1-1/4"	34
ProPEX Brass Fitting Adapter, 1 1/2" PEX x 1 1/2" Copper	Q5501515	2.989	0.125	1.16	1.625	1.9	0.813	1.704	ProPEX 1-1/2"	Sweat 1-1/2"	63.7

Part name	Part no.	Equivalent length through [ft]	Weight per UOM [lbs/UOM]
ProPEX Brass Fitting Adapter, 1/2" PEX x 1/2" Copper	Q5505050	1	0.06
ProPEX Brass Fitting Adapter, 5/8" PEX x 1/2" Copper	Q4506350	-	0.06
ProPEX Brass Fitting Adapter, 5/8" PEX x 3/4" Copper	Q4506375	-	0.11
ProPEX Brass Fitting Adapter, 3/4" PEX x 1/2" Copper	Q5507550	1.5	0.09
ProPEX Brass Fitting Adapter, 3/4" PEX x 3/4" Copper	Q5507575	1.5	0.11
ProPEX Brass Fitting Adapter, 3/4" PEX x 1" Copper	Q5507510	3.1	0.14
ProPEX Brass Fitting Adapter, 1" PEX x 1" Copper	Q5501010	1.3	0.19
ProPEX Brass Fitting Adapter, 1 1/4" PEX x 1 1/4" Copper	Q5501313	3.8	0.33
ProPEX Brass Fitting Adapter, 1 1/2" PEX x 1 1/2" Copper	Q5501515	1.8	0.46

Part name	Part no.	Codes	Standards	Listings
ProPEX brass fitting adapters	All	IMC IBC IRC NPC of Canada UMC	ASTM F1960 CSA B137.5 ASTM F877	IAPMO-ES ICC-ES-PMG cNSFus-rfh
In addition, the following parts have additional codes, standards, or listings:				
ProPEX Brass Fitting Adapter, 1/2" PEX x 1/2" Copper	Q5505050		NSF/ANSI 14	
ProPEX Brass Fitting Adapter, 5/8" PEX x 1/2" Copper	Q4506350		NSF-14	
ProPEX Brass Fitting Adapter, 5/8" PEX x 3/4" Copper	Q4506375		NSF/ANSI 14	
ProPEX Brass Fitting Adapter, 3/4" PEX x 1/2" Copper	Q5507550		NSF/ANSI 14	
ProPEX Brass Fitting Adapter, 3/4" PEX x 3/4" Copper	Q5507575		NSF-14	
ProPEX Brass Fitting Adapter, 3/4" PEX x 1" Copper	Q5507510		NSF/ANSI 14	
ProPEX Brass Fitting Adapter, 1" PEX x 1" Copper	Q5501010		NSF-14	
ProPEX Brass Fitting Adapter, 1 1/4" PEX x 1 1/4" Copper	Q5501313		NSF-14	
ProPEX Brass Fitting Adapter, 1 1/2" PEX x 1 1/2" Copper	Q5501515		NSF-14	

Installation	Related applications
ProPEX Tool and ProPEX Rings (sold separately) are required for connecting the PEX tubing. Do not solder within 18 inches of the ProPEX Fitting. For more information, refer to the Uponor Radiant Floor Heating Installation Handbook.	Radiant Heating and Cooling Systems

Footnotes	Contact information
-	<div> <div> Uponor Inc. 5925 148th Street West Apple Valley, MN 55124 T 800.321.4739 F 952.891.2008 </div> <div> Uponor Ltd. 6510 Kennedy Road Mississauga, ON L5T 2X4 T 888.594.7726 F 800.638.9517 </div> </div>