

# ProPEX brass female threaded adapters

## Project information

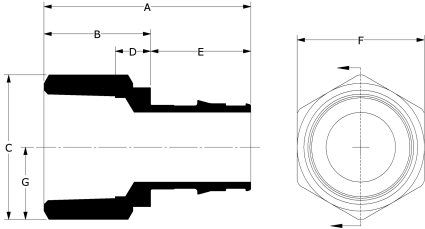
|                                |                 |
|--------------------------------|-----------------|
| Job name:                      | Location:       |
| Engineer:                      | Date submitted: |
| Contractor:                    | Submitted by:   |
| Manufacturer's representative: | Approved by:    |

## Technical data

|                         |  |
|-------------------------|--|
| Material                | Brass  |
| Temp/pressure ratings   | 73 °F (23 °C) at 160 psi (11 bar)<br>180 °F (82 °C) at 100 psi (6.9 bar)<br>200 °F (93 °C) at 80 psi (5.5 bar) |
| Prop 65 label required? | Yes  |

## Product information and application use

ProPEX® brass female threaded adapters connect Uponor PEX pipe to female NPT threads. 1 Use the adapters in hydronic heating and cooling systems. One end of the adapter is manufactured with the Uponor ProPEX fitting for connection to Wirsbo hePEX™ pipe; the other end is manufactured to adapt a male thread. These adapters are not safe for direct burial in soil. Note: Not for potable use.



| Part name   | Part no. | A [inch] | B [inch] | C [inch] | D [inch] | E [inch] | F [inch] | End Type 1    | End Type 2  | G [inch] | Cv   |
|---|----------|----------|----------|----------|----------|----------|----------|---------------|-------------|----------|------|
| ProPEX Brass Female Threaded Adapter, 1/2" PEX x 1/2" NPT     | Q5575050 | 1.569    | 0.86     | 1.139    | 0.326    | 0.709    | 1.0      | ProPEX 1/2"   | FNPT 1/2"   | 0.57     | 4.8  |
| ProPEX Brass Female Threaded Adapter, 5/8" PEX x 3/4" NPT     | Q4576375 | 1.906    | 1.04     | 1.345    | 0.486    | 0.866    | 1.187    | ProPEX 5/8"   | FNPT 3/4"   | -        | -    |
| ProPEX Brass Female Threaded Adapter, 3/4" PEX x 3/4" NPT     | Q5577575 | 1.845    | 0.9      | 1.356    | 0.347    | 0.945    | 1.187    | ProPEX 3/4"   | FNPT 3/4"   | 0.678    | 12   |
| ProPEX Brass Female Threaded Adapter, 3/4" PEX x 1" NPT       | Q5577510 | 2.145    | 1.2      | 1.717    | 0.52     | 0.945    | 1.5      | ProPEX 3/4"   | FNPT 1"     | 0.858    | 10.8 |
| ProPEX Brass Female Threaded Adapter, 1" PEX x 1" NPT         | Q5571010 | 2.381    | 1.2      | 1.717    | 0.52     | 1.181    | 1.5      | ProPEX 1"     | FNPT 1"     | 0.858    | 19.7 |
| ProPEX Brass Female Threaded Adapter, 1 1/4" PEX x 1 1/4" NPT | Q5571313 | 2.57     | 1.125    | 2.294    | 0.415    | 1.445    | 2.0      | ProPEX 1-1/4" | FNPT 1-1/4" | 1.147    | 30.8 |
| ProPEX Brass Female Threaded Adapter, 1 1/2" PEX x 1 1/2" NPT | Q5571515 | 2.854    | 1.15     | 2.583    | 0.42     | 1.704    | 2.25     | ProPEX 1-1/2" | FNPT 1-1/2" | 1.291    | 40.9 |
| ProPEX Brass Female Threaded Adapter, 2" PEX x 2" NPT         | Q5572020 | 3.547    | 1.4      | 3.449    | 0.703    | 2.147    | 3.0      | ProPEX 2"     | FNPT 2"     | 1.724    | 77.7 |

| Part name   | Part no. | Equivalent length through [ft] | Weight per UOM [lbs/UOM] |
|---|----------|--------------------------------|--------------------------|
| ProPEX Brass Female Threaded Adapter, 1/2" PEX x 1/2" NPT     | Q5575050 | 2.5                            | 0.14                     |
| ProPEX Brass Female Threaded Adapter, 5/8" PEX x 3/4" NPT     | Q4576375 | -                              | 0.2                      |
| ProPEX Brass Female Threaded Adapter, 3/4" PEX x 3/4" NPT     | Q5577575 | 2.3                            | 0.2                      |
| ProPEX Brass Female Threaded Adapter, 3/4" PEX x 1" NPT       | Q5577510 | 3.6                            | 0.4                      |
| ProPEX Brass Female Threaded Adapter, 1" PEX x 1" NPT         | Q5571010 | 3.8                            | 0.4                      |
| ProPEX Brass Female Threaded Adapter, 1 1/4" PEX x 1 1/4" NPT | Q5571313 | 4.8                            | 0.67                     |
| ProPEX Brass Female Threaded Adapter, 1 1/2" PEX x 1 1/2" NPT | Q5571515 | 5.1                            | 1.2                      |
| ProPEX Brass Female Threaded Adapter, 2" PEX x 2" NPT         | Q5572020 | 5.7                            | 2.2                      |

| Part name                             | Part no. | Codes                         | Standards                              | Listings                       |
|---------------------------------------|----------|-------------------------------|--|--------------------------------|
| ProPEX brass female threaded adapters | All      | IMC IBC IRC NPC of Canada UMC | ASTM F1960 CSA B137.5 NSF-14 ASTM F877 | IAPMO-ES ICC-ES-PMG cNSFus-rfh |

| Installation  |  | Related applications                |  |
|---|--|-------------------------------------|--|
| Use the appropriate ProPEX ring for Uponor PEX pipe (sold separately). Refer to the Uponor Radiant Installation Handbook, Complete Design Assistance Manual (CDAM), or Hydronic Piping Design Assistance Manual (HPDAM) for additional information. |  | Radiant Heating and Cooling Systems |  |
|   |  | Permafrost Protection Systems       |  |
|   |  | Turf Conditioning Systems           |  |
|   |  | Hydronic Piping Systems             |  |
|   |  |                                     |  |
| Footnotes   |  | Contact information                 |  |
| -   |  | Uponor Inc.                         |  |
|   |  | 5925 148th Street West              |  |
|   |  | Apple Valley, MN 55124              |  |
|   |  | T 800.321.4739                      |  |
|   |  | F 952.891.2008                      |  |
|   |  | Uponor Ltd.                         |  |
|   |  | 6510 Kennedy Road                   |  |
|   |  | Mississauga, ON L5T 2X4             |  |
|   |  | T 888.594.7726                      |  |
|   |  | F 800.638.9517                      |  |