

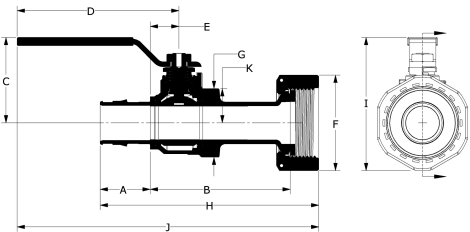
ProPEX lead-free (LF) brass water meter valves

Project information

Job name:	Location:
Engineer:	Date submitted:
Contractor:	Submitted by:
Manufacturer's representative:	Approved by:

Technical data

Material	LF Brass
Subcomponent Material	Valve: C27453 lead-free (LF) brass per ASTM B283/B283M Metal nut: UNS CW614 per ASTM B16/B16M EP nut: Polypropylene GF30 black Gasket: EPDM
Temp/pressure ratings	73 °F (23 °C) at 160 psi (11 bar) 180 °F (82 °C) at 100 psi (6.9 bar) 200 °F (93 °C) at 80 psi (5.5 bar)
Prop 65 label required?	Yes



Product information and application use

Use Uponor ProPEX® lead-free (LF) brass water meter service valves in all commercial submetering and residential water service inlets, outlets or both.1 The valves allow for a direct ASTM F1960 connection to water meters sized 5/8" to 1". Valve is sized for 3/4" or 1" Uponor AquaPEX® tubing. Product handle material is stainless steel.

Note: Temperature and pressure ratings stated are hydrostatic ratings. For domestic hot-water (DHW) and DHW recirculation installations, operating conditions should not exceed 140°F (60°C) at 80 psi (5.5 bar) in accordance with ASTM F2023. For additional information regarding application-specific temperature and pressure ratings, refer to the Uponor PEX Piping Systems Design and Installation Manual.

Part name	Part no.	A [inch]	B [inch]	C [inch]	D [inch]	E [inch]	F [inch]	G [inch]	H [inch]	I [inch]	J [inch]
ProPEX LF Brass Straight Water Meter Valve, 3/4" PEX x 1" NPSM	WS4820750	0.945	2.957	1.551	2.992	0.591	1.9	1.299	4.278	2.501	5.734
ProPEX LF Brass Straight Water Meter Valve, 1" PEX x 1 1/4" NPSM	WS4821000	1.181	3.302	2.015	3.819	0.677	2.25	1.614	5.158	3.139	7.119
ProPEX LF Brass Elbow Water Meter Valve, 3/4" PEX x 1" NPSM	WS4820751	0.945	2.249	1.551	2.992	0.781	1.9	1.299	0.65	3.277	5.735
ProPEX LF Brass Elbow Water Meter Valve, 1" PEX x 1 1/4" NPSM	WS4821001	1.181	2.625	2.015	3.819	0.827	2.25	1.614	0.807	4.022	7.119

Part name	Part no.	K [inch]	Cv	End Type 1	End Type 2	Operating temperature min. [°F]	Weight per UOM [lbs/UOM]
ProPEX LF Brass Straight Water Meter Valve, 3/4" PEX x 1" NPSM	WS4820750	0.65	10.9	ProPEX 3/4"	NPSM 1"	-	0.76
ProPEX LF Brass Straight Water Meter Valve, 1" PEX x 1 1/4" NPSM	WS4821000	0.807	18.7	ProPEX 1"	NPSM 1-1/4"	-29	1.22
ProPEX LF Brass Elbow Water Meter Valve, 3/4" PEX x 1" NPSM	WS4820751	0.65	4.9	ProPEX 3/4"	NPSM 1"	-29	0.76
ProPEX LF Brass Elbow Water Meter Valve, 1" PEX x 1 1/4" NPSM	WS4821001	0.807	9.7	ProPEX 1"	NPSM 1-1/4"	-	1.24

Part name	Part no.	Codes	Standards	Listings
ProPEX lead-free (LF) brass water meter valves	All	UPC IBC IRC IPC NPC of Canada UMC NSPC IMC	NSF-372 ASTM F877 NSF-359 ASTM F1960 CSA B137.5 NSF-61 NSF-14	HUD MR 1269 cNSFus-pw-G U.P.Code

Installation	Related applications
ProPEX tool and ProPEX rings (sold separately) are required for connecting the PEX tubing. For more information, refer to the Uponor Residential Plumbing Systems Installation Guide or the Uponor Piping Systems Installation Guide.	PEX-a Plumbing Systems

Footnotes	Contact information
-	Uponor Inc. 5925 148th Street West Apple Valley, MN 55124 T 800.321.4739 F 952.891.2008 Uponor Ltd. 6510 Kennedy Road Mississauga, ON L5T 2X4 T 888.594.7726 F 800.638.9517