

EP flow-through multi-port vertical tees

Project information

Job name:	Location:
Engineer:	Date submitted:
Contractor:	Submitted by:
Manufacturer's representative:	Approved by:

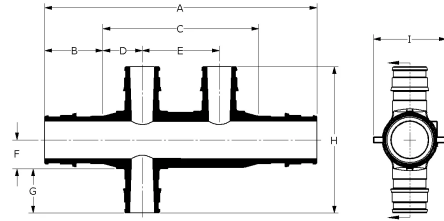
Technical data

Material	Engineered Polymer
End type 1	ProPEX 3/4"
End type 2	ProPEX 3/4"
End type 3	ProPEX 3/4"
End type 4	ProPEX 1/2"
Temp/pressure ratings	73 °F (23 °C) at 160 psi (11 bar) 180 °F (82 °C) at 100 psi (6.9 bar) 200 °F (93 °C) at 80 psi (5.5 bar)

Product information and application use

Engineered polymer (EP) flow-through vertical multi-port tees are designed for use in hot and cold domestic potable water distribution systems. The tee features 3/4" ProPEX® inlets and 1/2" ProPEX outlets.

Note: Temperature and pressure ratings stated are hydrostatic ratings. For domestic hot-water (DHW) and DHW recirculation installations, operating conditions should not exceed 140°F (60°C) at 80 psi (5.5 bar) in accordance with ASTM F2023. For additional information regarding application-specific temperature and pressure ratings, refer to the Uponor PEX Piping Systems Design and Installation Manual.



Part name	Part no.	A [inch]	B [inch]	C [inch]	D [inch]	E [inch]	F [inch]	G [inch]	H [inch]	I [inch]	J [inch]
EP Flow-through Multi-port Vertical Tee, 3 (1/2") outlets, 3/4" x 3/4" x 3/4" ProPEX	Q2237757	6.17	0.955	4.625	0.625	1.25	0.467	0.719	2.845	1.18	0.955
EP Flow-through Multi-port Vertical Tee, 4 (1/2") outlets, 3/4" x 3/4" x 3/4" ProPEX	Q2247757	7.42	0.955	5.875	0.625	1.25	0.467	0.719	2.845	1.18	0.955

Part name	Part no.	Cv Through	Cv Branch
EP Flow-through Multi-port Vertical Tee, 3 (1/2") outlets, 3/4" x 3/4" x 3/4" ProPEX	Q2237757	13.6	3.1
EP Flow-through Multi-port Vertical Tee, 4 (1/2") outlets, 3/4" x 3/4" x 3/4" ProPEX	Q2247757	-	3.3

Part name	Part no.	Codes	Standards	Listings
EP flow-through multi-port vertical tees	All	UPC IBC IRC IPC NPC of Canada UMC NSPC IMC	ASTM E814/ULC S115 ASTM F877 ASTM F1960 CSA B137.5 ULC S102.2 ASTM E119/UL 263 NSF/ANSI/CAN 61 ULC S101 NSF/ANSI 14	IAPMO-ES HUD MR 1269 ICC-ES-PMG cNSFus-pw UL U.P.Code cQAlus P321

Installation

Use any product designed to mount 1" copper pipe as a mounting bracket. For more information, refer to the Uponor Piping Systems Installation Guide

Related applications

PEX-a Plumbing Systems

Notes

Cv branch tee to branch #2 = 3.1
Cv through tee to tee = 13.6
Cv through tee to side = 7.4
Cv branch side to #2 = 3.6
Cv through side to tee = 6.9

Footnotes	Contact information
-	<p>Uponor Inc. 5925 148th Street West Apple Valley, MN 55124 T 800.321.4739 F 952.891.2008</p> <p>Uponor Ltd. 6510 Kennedy Road Mississauga, ON L5T 2X4 T 888.594.7726 F 800.638.9517</p>