

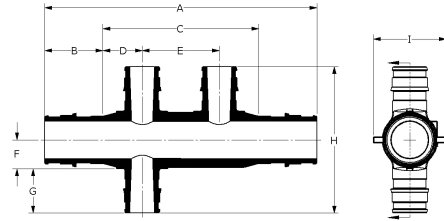
EP flow-through opposing-port multi-port tees

Project information

Job name:	Location:
Engineer:	Date submitted:
Contractor:	Submitted by:
Manufacturer's representative:	Approved by:

Technical data

Material	Engineered Polymer
End type 1	ProPEX 3/4"
End type 2	ProPEX 3/4"
End type 3	ProPEX 1/2"
End type 4	ProPEX 1/2"
Temp/pressure ratings	73 °F (23 °C) at 160 psi (11 bar) 180 °F (82 °C) at 100 psi (6.9 bar) 200 °F (93 °C) at 80 psi (5.5 bar)
Prop 65 label required?	No



Product information and application use

Engineered polymer (EP) flow-through opposing-port multi-port tees feature 3/4" ProPEX® inlets with opposing 1/2" ProPEX branch outlets. The tees are designed for central location to facilitate piping in two directions

Note: Temperature and pressure ratings stated are hydrostatic ratings. For domestic hot-water (DHW) and DHW recirculation installations, operating conditions should not exceed 140°F (60°C) at 80 psi (5.5 bar) in accordance with ASTM F2023. For additional information regarding application-specific temperature and pressure ratings, refer to the Uponor PEX Piping Systems Design and Installation Manual.

Part name	Part no.	A [mm]	B [mm]	C [mm]	D [mm]	E [mm]	F [mm]	G [mm]	H [mm]	I [mm]	Cv Through
EP Flow-through Opposing-port Multi-port Tee, 3 (1/2") outlets, 3/4" x3/4" ProPEX	Q2337557	112.01	24.26	63.50	15.88	31.75	11.87	18.26	60.27	29.97	15.9
EP Flow-through Opposing-port Multi-port Tee, 4 (1/2") outlets, 3/4" x3/4" ProPEX	Q2347557	112.01	24.26	63.50	15.88	31.75	11.87	18.26	60.27	29.97	16.9
EP Flow-through Opposing-port Multi-port Tee, 6 (1/2") outlets, 3/4" x3/4" ProPEX	Q2367557	143.76	24.26	95.25	15.88	31.75	11.87	18.26	60.27	29.97	16.4

Part name	Part no.	Weight per UOM [kg/UOM]
EP Flow-through Opposing-port Multi-port Tee, 3 (1/2") outlets, 3/4" x3/4" ProPEX	Q2337557	0.033
EP Flow-through Opposing-port Multi-port Tee, 4 (1/2") outlets, 3/4" x3/4" ProPEX	Q2347557	0.035
EP Flow-through Opposing-port Multi-port Tee, 6 (1/2") outlets, 3/4" x3/4" ProPEX	Q2367557	0.049

Part name	Part no.	Codes	Standards	Listings
EP flow-through opposing-port multi-port tees	All	UPC IBC IRC IPC NPC of Canada UMC NSPC IMC	ASTM E814 ULC S115 ASTM F877 ASTM F1960 CSA B137.5 ULC S102.2 ASTM E119 UL 263 NSF/ANSI/CAN 61 ULC S101 NSF/ANSI 14	IAPMO-ES HUD MR 1269 ICC-ES-PMG cNSFus-pw UL U.P.Code cQAlus P321

Installation

Use any product designed to mount 1" copper pipe as a mounting bracket. For more information, refer to the Uponor AquaPEX® Professional Plumbing Installation Guide.

Related applications

PEX-a Plumbing Systems

Footnotes

Contact information

-	Uponor Inc. 5925 148th Street West Apple Valley, MN 55124 T 800.321.4739 F 952.891.2008	Uponor Ltd. 6510 Kennedy Road Mississauga, ON L5T 2X4 T 888.594.7726 F 800.638.9517
---	---	---