

Metal bend supports

Project information

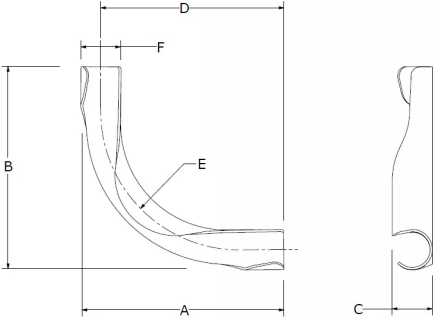
|                                |                 |
|--------------------------------|-----------------|
| Job name:                      | Location:       |
| Engineer:                      | Date submitted: |
| Contractor:                    | Submitted by:   |
| Manufacturer's representative: | Approved by:    |

Technical data

Material    Metal

Product information and application use

Snap the tubing into the Metal Bend Support at the beginning of the bend. Continue the bend through the support and snap the tubing into the support at the end of the bend. Refer to the Uponor AquaPEX® Professional Plumbing Installation Guide or the Uponor Radiant Floor Heating Installation Handbook for additional information.



| Part name               | Part no. | Subcomponent Material |
|-------------------------|----------|-----------------------|
| 3/8" Metal Bend Support | A5110375 | SPHC steel            |
| 1/2" Metal Bend Support | A5110500 | -                     |
| 5/8" Metal Bend Support | A5110625 | -                     |
| 3/4" Metal Bend Support | A5110750 | -                     |

| Installation   | Related applications  |
|--|---|
| Snap the tubing into the Metal Bend Support at the beginning of the bend. Continue the bend through the support and snap the tubing into the support at the end of the bend. Refer to the Uponor AquaPEX® Professional Plumbing Installation Guide or the Uponor Radiant Floor Heating Installation Handbook for additional information. | PEX-a Plumbing Systems<br>Radiant Heating and Cooling Systems<br>AquaSAFE™ Fire Safety Systems<br>AquaSAFE™ Fire Safety Systems |

| Footnotes | Contact information  |
|-----------|--|
| -         | Uponor Inc.<br>5925 148th Street West<br>Apple Valley, MN 55124<br>T 800.321.4739<br>F 952.891.2008<br><br>Uponor Ltd.<br>6510 Kennedy Road<br>Mississauga, ON L5T 2X4<br>T 888.594.7726<br>F 800.638.9517 |