

ProPEX brass sweat adapters

Project information

Job name:	Location:
Engineer:	Date submitted:
Contractor:	Submitted by:
Manufacturer's representative:	Approved by:

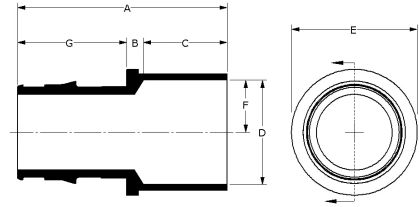
Technical data

Temp/pressure ratings	73 °F (23 °C) at 160 psi (11 bar)
	180 °F (82 °C) at 100 psi (6.9 bar)
	200 °F (93 °C) at 80 psi (5.5 bar)
Prop 65 label required?	Yes

Product information and application use

ProPEX® brass sweat adapters transition Uponor PEX pipe to copper pipe for use in hydronic heating and cooling systems.1 One end of the adapter is manufactured with the Uponor ProPEX fitting for connection to Wirsbo hePEX™ pipe and the other end is manufactured to adapt copper sweat connections. These adapters are not safe for direct burial in soil. Note: Not for potable use.

Note: Temperature and pressure ratings stated are hydrostatic ratings. For domestic hot-water (DHW) and DHW recirculation installations, operating conditions should not exceed 140°F (60°C) at 80 psi (5.5 bar) in accordance with ASTM F2023. For additional information regarding application-specific temperature and pressure ratings, refer to the Uponor PEX Piping Systems Design and Installation Manual.



Part name	Part no.	A [mm]	B [mm]	C [mm]	D [mm]	E [mm]	F [mm]	Cv	Material group	End Type 1	End Type 2
ProPEX LF Brass Sweat Adapter, 3/8" PEX x 1/2" Copper	LF4513850	33.53	5.82	12.70	15.98	18.25	7.99	5.7	LF Brass	ProPEX 3/8"	Sweat 1/2"
ProPEX Brass Sweat Adapter, 1/2" PEX x 1/2" Copper	Q5515050	34.74	4.04	12.70	16.03	19.56	8.01	5.7	Brass	ProPEX 1/2"	Sweat 1/2"
ProPEX LF Brass Sweat Adapter, 1/2" PEX x 3/4" Copper	LF4515075	41.50	4.45	19.05	22.33	25.07	11.16	5.1	LF Brass	ProPEX 1/2"	Sweat 3/4"
ProPEX Brass Sweat Adapter, 5/8" PEX x 1/2" Copper	Q4516350	37.87	3.18	12.70	15.98	23.88	7.99	-	Brass	ProPEX 5/8"	Sweat 1/2"
ProPEX Brass Sweat Adapter, 5/8" PEX x 3/4" Copper	Q4516375	47.40	6.35	19.05	22.33	26.42	11.16	-	Brass	ProPEX 5/8"	Sweat 3/4"
ProPEX Brass Sweat Adapter, 3/4" PEX x 1/2" Copper	Q5517550	42.55	5.84	12.70	16.03	27.94	8.01	8.8	Brass	ProPEX 3/4"	Sweat 1/2"
ProPEX Brass Sweat Adapter, 3/4" PEX x 3/4" Copper	Q5517575	46.86	3.81	19.05	22.38	27.94	11.19	13.4	Brass	ProPEX 3/4"	Sweat 3/4"
ProPEX Brass Sweat Adapter, 3/4" PEX x 1" Copper	Q5517510	52.58	5.46	23.11	28.75	32	14.38	10.9	Brass	ProPEX 3/4"	Sweat 1"
ProPEX Brass Sweat Adapter, 1" PEX x 1" Copper	Q5511010	57.30	4.19	23.11	28.75	34.54	14.38	22.1	Brass	ProPEX 1"	Sweat 1"
ProPEX Brass Sweat Adapter, 1 1/4" PEX x 1 1/4" Copper	Q5511313	66.04	4.70	24.64	35.10	43.69	17.55	34	Brass	ProPEX 1-1/4"	Sweat 1-1/4"
ProPEX Brass Sweat Adapter, 2" PEX x 2" Copper	Q5512020	96.44	7.87	34.04	54.18	68.07	27.09	83.6	Brass	ProPEX 2"	Sweat 2"
ProPEX LF Brass Sweat Adapter, 3" PEX x 3" Copper	LF4513030	135.38	7.37	42.16	79.50	96.27	39.75	189.1	LF Brass	ProPEX 3"	Sweat 3"
ProPEX Brass Sweat Adapter, 1 1/2" PEX x 1 1/2" Copper	Q5511515	77.44	6.48	27.69	41.48	48.26	20.74	45.5	Brass	ProPEX 1-1/2"	Sweat 1-1/2"

Part name	Part no.	G [mm]	Weight per UOM [kg/UOM]
ProPEX LF Brass Sweat Adapter, 3/8" PEX x 1/2" Copper	LF4513850	15.01	0.023
ProPEX Brass Sweat Adapter, 1/2" PEX x 1/2" Copper	Q5515050	18	0.027
ProPEX LF Brass Sweat Adapter, 1/2" PEX x 3/4" Copper	LF4515075	18	0.039
ProPEX Brass Sweat Adapter, 5/8" PEX x 1/2" Copper	Q4516350	22	0.05
ProPEX Brass Sweat Adapter, 5/8" PEX x 3/4" Copper	Q4516375	22	0.073
ProPEX Brass Sweat Adapter, 3/4" PEX x 1/2" Copper	Q5517550	24	0.045
ProPEX Brass Sweat Adapter, 3/4" PEX x 3/4" Copper	Q5517575	24	0.068
ProPEX Brass Sweat Adapter, 3/4" PEX x 1" Copper	Q5517510	24	0.136

ProPEX Brass Sweat Adapter, 1" PEX x 1" Copper	Q5511010	30	0.141
ProPEX Brass Sweat Adapter, 1 1/4" PEX x 1 1/4" Copper	Q5511313	36.70	0.181
ProPEX Brass Sweat Adapter, 2" PEX x 2" Copper	Q5512020	54.53	0.907
ProPEX LF Brass Sweat Adapter, 3" PEX x 3" Copper	LF4513030	-	1.293
ProPEX Brass Sweat Adapter, 1 1/2" PEX x 1 1/2" Copper	Q5511515	43.28	0.295

Part name	Part no.	Codes	Standards	Listings
ProPEX brass sweat adapters	All	IMC IBC IRC UMC NPC of Canada	ASTM F1960 CSA B137.5 ASTM F877	IAPMO-ES ICC-ES-PMG
In addition, the following parts have additional codes, standards, or listings:				
ProPEX LF Brass Sweat Adapter, 3/8" PEX x 1/2" Copper	LF4513850	UPC IPC NSPC	NSF/ANSI/CAN 372 NSF/ANSI/CAN 61 NSF/ANSI 14	cNSFus-pw-G U.P.Code
ProPEX Brass Sweat Adapter, 1/2" PEX x 1/2" Copper	Q5515050		NSF-14	cNSFus-rfh
ProPEX LF Brass Sweat Adapter, 1/2" PEX x 3/4" Copper	LF4515075	UPC IPC NSPC	NSF/ANSI/CAN 372 NSF/ANSI/CAN 61 NSF/ANSI 14	cNSFus-pw-G U.P.Code
ProPEX Brass Sweat Adapter, 5/8" PEX x 1/2" Copper	Q4516350		NSF/ANSI 14	cNSFus-rfh
ProPEX Brass Sweat Adapter, 5/8" PEX x 3/4" Copper	Q4516375		NSF/ANSI 14	cNSFus-rfh
ProPEX Brass Sweat Adapter, 3/4" PEX x 1/2" Copper	Q5517550		NSF/ANSI 14	cNSFus-rfh
ProPEX Brass Sweat Adapter, 3/4" PEX x 3/4" Copper	Q5517575		NSF/ANSI 14	cNSFus-rfh
ProPEX Brass Sweat Adapter, 3/4" PEX x 1" Copper	Q5517510		NSF-14	cNSFus-rfh
ProPEX Brass Sweat Adapter, 1" PEX x 1" Copper	Q5511010		NSF/ANSI 14	cNSFus-rfh
ProPEX Brass Sweat Adapter, 1 1/4" PEX x 1 1/4" Copper	Q5511313		NSF-14	cNSFus-rfh
ProPEX Brass Sweat Adapter, 2" PEX x 2" Copper	Q5512020		NSF-14	cNSFus-rfh
ProPEX LF Brass Sweat Adapter, 3" PEX x 3" Copper	LF4513030	UPC IPC NSPC	NSF/ANSI 14 NSF/ANSI/CAN 61 NSF/ANSI/CAN 372	U.P.Code cNSFus-pw-G
ProPEX Brass Sweat Adapter, 1 1/2" PEX x 1 1/2" Copper	Q5511515		NSF-14	cNSFus-rfh

Installation	Related applications
Use the appropriate Uponor ProPEX ring for the pipe (sold separately). Do not solder within 18" of the ProPEX fitting. Refer to the Radiant Floor Heating Installation Handbook, Complete Design Assistance Manual (CDAM), or the Hydronic Piping Design Assistance Manual (HPDAM) for additional information.	Radiant Heating and Cooling Systems
	Permafrost Protection Systems
	Turf Conditioning Systems
	Hydronic Piping Systems

Footnotes	Contact information
-	<div> <div> Uponor Inc. 5925 148th Street West Apple Valley, MN 55124 T 800.321.4739 F 952.891.2008 </div> <div> Uponor Ltd. 6510 Kennedy Road Mississauga, ON L5T 2X4 T 888.594.7726 F 800.638.9517 </div> </div>