

# ProPEX lead-free (LF) brass and brass coupling

## Project Information

Job name:	Location:
Engineer:	Date submitted:
Contractor:	Submitted by:
Manufacturer's representative:	Approved by:

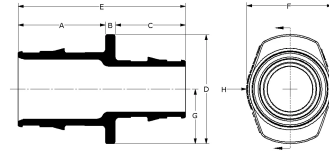
## Technical data

Temp/pressure ratings	73 °F (23 °C) at 160 psi (11 bar)
	180 °F (82 °C) at 100 psi (6.9 bar)
	200 °F (93 °C) at 80 psi (5.5 bar)
Prop 65 label required?	Yes

## Product information and application use

ProPEX® lead-free (LF) brass couplings are available for use in hot and cold domestic potable water and hydronic heating and cooling systems.1 The coupling features the Uponor ProPEX fitting for connections to Wirsbo hePEX™ tubing or Uponor AquaPEX® tubing. Couplings are safe for direct burial in soil.

Note: Temperature and pressure ratings stated are hydrostatic ratings. For domestic hot-water (DHW) and DHW recirculation installations, operating conditions should not exceed 140°F (60°C) at 80 psi (5.5 bar) in accordance with ASTM F2023. For additional information regarding application-specific temperature and pressure ratings, refer to the Uponor PEX Piping Systems Design and Installation Manual.



Part name	Part no.	A [Inch]	B [Inch]	C [Inch]	D [Inch]	E [Inch]	F [Inch]	G [Inch]	H [Inch]	Material group	End Type 1
ProPEX LF Brass Coupling, 3/8" PEX x 1/2" PEX	LF4543850	0.709	0.125	0.591	0.74	1.425	0.74	0.37	0.37	LF Brass	ProPEX 3/8"
ProPEX Brass Coupling, 5/8" PEX x 5/8" PEX	Q4546363	0.866	0.125	0.866	0.94	1.857	0.94	0.47	0.47	Brass	ProPEX 5/8"

Part name	Part no.	End Type 2	Weight per UOM [lbs/UOM]
ProPEX LF Brass Coupling, 3/8" PEX x 1/2" PEX	LF4543850	ProPEX 1/2"	0.05
ProPEX Brass Coupling, 5/8" PEX x 5/8" PEX	Q4546363	ProPEX 5/8"	0.08

Part name	Part no.	Codes	Standards	Listings
ProPEX lead-free (LF) brass and brass coupling	All	IBC IRC NPC of Canada UMC IMC	ASTM F877 ASTM F1960 CSA B137.5 NSF-14	IAPMO-ES ICC-ES-PMG
In addition, the following parts have additional codes, standards, or listings:				
ProPEX LF Brass Coupling, 3/8" PEX x 1/2" PEX	LF4543850	UPC IPC NSPC	NSF-372 NSF-61	cNSFus-pw-G U.P.Code
ProPEX Brass Coupling, 5/8" PEX x 5/8" PEX	Q4546363			cNSFus-rfh

## Installation

ProPEX tools and ProPEX rings (sold separately) are required for connecting the PEX tubing. Use the appropriately sized Uponor ProPEX ring for tubing connections. For more information, refer to the Uponor AquaPEX professional plumbing installation guide, the Uponor AquaSAFETM residential fire sprinkler installation guide or the Uponor radiant floor heating installation handbook.

## Related applications

- PEX-a Plumbing Systems
- Uponor Residential Fire Safety Systems
- Radiant Heating and Cooling Systems
- Permafrost Protection Systems
- Turf Conditioning Systems

## Footnotes

## Contact information

Uponor Inc.  
5925 148th Street West  
Apple Valley, MN 55124  
T 800.321.4739  
F 952.891.2008

Uponor Ltd.  
6510 Kennedy Road  
Mississauga, ON L5T 2X4  
T 888.594.7726  
F 800.638.9517