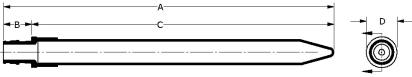


# ProPEX lead-free (LF) copper straight stubs

Project information	
Job name:	Location:
Engineer:	Date submitted:
Contractor:	Submitted by:
Manufacturer's representative:	Approved by:

Technical data	
Material	Copper
Subcomponent Material	LF Brass
	Copper
End type 1	ProPEX 1/2"
End type 2	Copper 1/2"
Temp/pressure ratings	73 °F (23 °C) at 160 psi (11 bar)
	180 °F (82 °C) at 100 psi (6.9 bar)
	200 °F (93 °C) at 80 psi (5.5 bar)
Prop 65 label required?	Yes



Product information and application use	
ProPEX® Lead-free (LF) Copper Straight Stub transitions Uponor PEX tubing to copper pipe for use in hot and cold domestic potable water systems and hydronic radiant heating and cooling systems. 1 The transition fitting can be used for direct transition to copper sweat, copper press and roll-groove applications. The transition fitting is safe for direct burial in soil.	
Note: Temperature and pressure ratings stated are hydrostatic ratings. For domestic hot-water (DHW) and DHW recirculation installations, operating conditions should not exceed 140°F (60°C) at 80 psi (5.5 bar) in accordance with ASTM F2023. For additional information regarding application-specific temperature and pressure ratings, refer to the Uponor PEX Piping Systems Design and Installation Manual.	

Part name	Part no.	A [inch]	B [inch]	C [inch]	D [inch]	Weight per UOM [lbs/UOM]
ProPEX LF Copper Straight Stub, 1/2" PEX LF Brass x 1/2" Copper (8")	LF2935050	8.3	0.709	7.592	0.77	0.22
ProPEX LF Copper Straight Stub, 1/2" PEX LF Brass x 1/2" Copper (15")	LF2945050	14.5	0.709	13.792	0.77	0.4

Part name	Part no.	Codes	Standards	Listings
ProPEX lead-free (LF) copper straight stubs	All	UPC IBC IRC IPC NPC of Canada UMC NSPC IMC	NSF/ANSI/CAN 372 ASTM F877 ASTM F1960 CSA B137.5 NSF/ANSI/CAN 61 NSF/ANSI 14	IAPMO-ES HUD MR 1269
In addition, the following parts have additional codes, standards, or listings:				
ProPEX LF Copper Straight Stub, 1/2" PEX LF Brass x 1/2" Copper (15")	LF2945050			

Installation	Related applications
Use the appropriate Uponor ProPEX Ring for the tubing (sold separately). Do not solder within 18 inches of the ProPEX fitting. Refer to the Uponor AquaPEX® Professional Plumbing Installation Guide or Uponor Hydronic Piping Design Assistance Manual for additional information.	PEX-a Plumbing Systems Hydronic Radiant Heating and Cooling Systems Snow Melting Systems Turf Conditioning Systems Permafrost Prevention Systems

Footnotes	Contact information
-	Uponor Inc. 5925 148th Street West Apple Valley, MN 55124 T 800.321.4739 F 952.891.2008 Uponor Ltd. 6510 Kennedy Road Mississauga, ON L5T 2X4 T 888.594.7726 F 800.638.9517