

ProPEX to MIP lead-free (LF) brass ball valves

Project information

|                                |                 |
|--------------------------------|-----------------|
| Job name:                      | Location:       |
| Engineer:                      | Date submitted: |
| Contractor:                    | Submitted by:   |
| Manufacturer's representative: | Approved by:    |

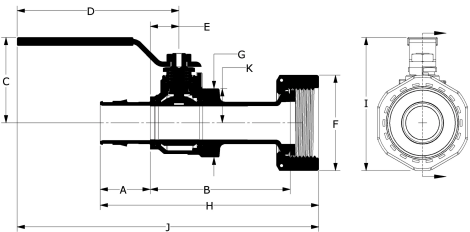
Technical data

|                         |  |
|-------------------------|--|
| Material                | LF Brass   |
| End type 1              | ProPEX 1/2"  |
| End type 2              | MNPT 1/2"  |
| Cold working pressure   | 249.5 psi  |
| Temp/pressure ratings   | 73 °F (23 °C) at 160 psi (11 bar)<br>180 °F (82 °C) at 100 psi (6.9 bar)<br>200 °F (93 °C) at 80 psi (5.5 bar)<br>210 °F (99 °C) at 149 psi (10.3 bar) |
| Prop 65 label required? | Yes  |

Product information and application use

ProPEX® Lead-free Ball Valve features a shut-off valve between 1/2" Uponor AquaPEX® tubing and 1/2" male iron pipe (MIP). 1 These valves are not compatible with applications using glycol.

Note: Temperature and pressure ratings stated are hydrostatic ratings. For domestic hot-water (DHW) and DHW recirculation installations, operating conditions should not exceed 140°F (60°C) at 80 psi (5.5 bar) in accordance with ASTM F2023. For additional information regarding application-specific temperature and pressure ratings, refer to the Uponor PEX Piping Systems Design and Installation Manual.



| Part name                                      | Part no.  | Codes                     | Standards   | Listings             |
|--|-----------|---------------------------|---|----------------------|
| ProPEX to MIP lead-free (LF) brass ball valves | LF4795050 | UPC IRC IPC NPC of Canada | NSF-372 ASME A112.18.1 ASTM F877 ASTM F1960 CSA B125 CSA B137.5 NSF-61 NSF-14 | cNSFus-pw-G U.P.Code |

| Installation   | Related applications   |
|--|------------------------|
| Install valve according to local building code. Do not dismantle. If soldering, aim flame away from fitting. For more information, refer to the Uponor Professional Plumbing Installation Guide. | PEX-a Plumbing Systems |

| Footnotes | Contact information  |
|-----------|--|
| -         | Uponor Inc.<br>5925 148th Street West<br>Apple Valley, MN 55124<br>T 800.321.4739<br>F 952.891.2008<br><br>Uponor Ltd.<br>6510 Kennedy Road<br>Mississauga, ON L5T 2X4<br>T 888.594.7726<br>F 800.638.9517 |