

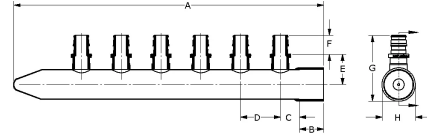
ProPEX (type L) copper branch manifolds

Project Information

Job name:	Location:
Engineer:	Date submitted:
Contractor:	Submitted by:
Manufacturer's representative:	Approved by:

Technical data

Material	Copper
Subcomponent Material	Copper, LF Brass
Manifold size	1 inch
End type 1	ProPEX 1/2"
End type 2	Sweat 1"
Temp/pressure ratings	73 °F (23 °C) at 160 psi (11 bar) 180 °F (82 °C) at 100 psi (6.9 bar) 200 °F (93 °C) at 80 psi (5.5 bar) 210 °F (99 °C) at 149 psi (10.3 bar)
Max. fluid flow rate	21 gpm
Prop 65 label required?	Yes



Product Information and application use

The Uponor 1" Copper Branch Manifold with 1/2" ProPEX® Lead-free (LF) Outlets is used for hot and cold domestic potable-water distribution systems.1 The manifold has a 1" copper sweat fitting adapter supply connection. All outlets are configured with 1/2" ProPEX LF brass connections.

Note: Temperature and pressure ratings stated are hydrostatic ratings. For domestic hot-water (DHW) and DHW recirculation installations, operating conditions should not exceed 140°F (60°C) at 80 psi (5.5 bar) in accordance with ASTM F2023. For additional information regarding application-specific temperature and pressure ratings, refer to the Uponor PEX Piping Systems Design and Installation Manual.

Part name	Part no.	A [inch]	B [inch]	C [inch]	D [inch]	E [inch]	F [inch]	G [inch]	H [inch]	Weight per UOM [lbs/UOM]
ProPEX 1" Copper Branch Manifold with 1/2" ProPEX LF brass outlets, 4 outlets	LF2801050	8.675	0.987	0.639	1.5	1.143	0.709	2.479	1.256	0.8
ProPEX 1" Copper Branch Manifold with 1/2" ProPEX LF brass outlets, 6 outlets	LF2811050	11.675	0.987	0.639	1.5	1.143	0.709	2.479	1.256	1.1
ProPEX 1" Copper Branch Manifold with 1/2" ProPEX LF brass outlets, 8 outlets	LF2821050	14.675	0.987	0.639	1.5	1.143	0.709	2.479	1.256	1.4
ProPEX 1" Copper Branch Manifold with 1/2" ProPEX LF brass outlets, 10 outlets	LF2831050	17.675	0.987	0.639	1.5	1.143	0.709	2.479	1.256	1.7
ProPEX 1" Copper Branch Manifold with 1/2" ProPEX LF brass outlets, 12 outlets	LF2841050	20.675	0.987	0.639	1.5	1.143	0.709	2.479	1.256	1.9

Part name	Part no.	Codes	Standards	Listings
ProPEX (type L) copper branch manifolds	All	UPC IBC IRC IPC NPC of Canada NSPC IMC	NSF/ANSI/CAN 372 ASTM F877 ASTM F1960 CSA B137.5 NSF/ANSI/CAN 61 NSF/ANSI 14	IAPMO-ES ICC-ES-PMG cNSFus-pw-G U.P.Code

In addition, the following parts have additional codes, standards, or listings:

ProPEX 1" Copper Branch Manifold with 1/2" ProPEX LF brass outlets, 4 outlets	LF2801050	UMC
ProPEX 1" Copper Branch Manifold with 1/2" ProPEX LF brass outlets, 6 outlets	LF2811050	UMC
ProPEX 1" Copper Branch Manifold with 1/2" ProPEX LF brass outlets, 10 outlets	LF2831050	UMC
ProPEX 1" Copper Branch Manifold with 1/2" ProPEX LF brass outlets, 12 outlets	LF2841050	UMC

Installation

Use any product designed to mount 1" copper pipe as a mounting bracket. Any bend within 6 inches of the ProPEX connection to the manifold requires the use of a Tube Talon (F7050750) or Bend Support (A5110500 and A5150500). Refer to the Uponor Commercial Piping Pocket Guide, Uponor AquaSAFE™ Residential Fire Sprinkler Installation Guide or the Uponor Radiant Installation Handbook for additional information.

Related applications

PEX-a Plumbing Systems
Residential fire safety systems
Radiant Heating and Cooling Systems

Maximum Flow Rate at 5 fps: 12.8 gpm
Maximum Flow Rate at 8 fps: 20.5 gpm

Footnotes	Contact Information
-	<div><div>Uponor Inc.</div><div>5925 148th Street West</div><div>Apple Valley, MN 55124</div><div>T 800.321.4739</div><div>F 952.891.2008</div></div> <div><div>Uponor Ltd.</div><div>6510 Kennedy Road</div><div>Mississauga, ON L5T 2X4</div><div>T 888.594.7726</div><div>F 800.638.9517</div></div>