

QS-style conversion nipples

Project Information

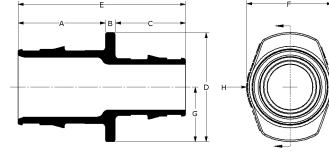
Job name:	Location:
Engineer:	Date submitted:
Contractor:	Submitted by:
Manufacturer's representative:	Approved by:

Technical data

Material	Brass
Temp/pressure ratings	73 °F (23 °C) at 160 psi (11 bar) 180 °F (82 °C) at 100 psi (6.9 bar) 200 °F (93 °C) at 80 psi (5.5 bar)
Prop 65 label required?	Yes

Product information and application use

The Uponor QS-style Conversion Nipple fittings are available in various thread options and used with compression fittings to adapt to male national pipe thread (MNPT) in hydronic heating applications. Use the QS-style Conversion Nipple and the appropriate fitting to connect 5/16", 3/8", 1/2", 5/8" or 3/4" Uponor tubing to 1/2", 3/4" and 1" NPT.



Part name	Part no.	A [inch]	B [inch]	C [inch]	D [inch]	E [inch]	F [inch]	G [inch]	H [inch]	Weight per UOM [lbs/UOM]	End Type 1
QS-style Conversion Nipple, R20 x 1/2" NPT	A4322050	1.536	1.227	1.063	0.5	-	-	-	-	0.18	ISO 228-G 3/4"
QS-style Conversion Nipple, R20 x 3/4" NPT	A4322075	1.668	1.227	1.063	0.75	-	-	-	-	0.25	ISO 228-G 3/4"
QS-style Conversion Nipple, R25 x 3/4" NPT (for 3/4" tubing only)	A4322575	0.746	0.37	0.632	1.585	1.748	1.375	0.792	0.687	0.3	ISO 228-G 1"

Part name	Part no.	End Type 2
QS-style Conversion Nipple, R20 x 1/2" NPT	A4322050	MNPT 1/2"
QS-style Conversion Nipple, R20 x 3/4" NPT	A4322075	MNPT 3/4"
QS-style Conversion Nipple, R25 x 3/4" NPT (for 3/4" tubing only)	A4322575	MNPT 3/4"

Installation

The corresponding compression fitting threads onto the R20 or R25 thread to adapt to MNPT. For more information, refer to the Radiant Floor Heating Installation Handbook.

Related applications

- Radiant Heating and Cooling Systems
- Permafrost Protection Systems
- Turf Conditioning Systems

Codes

-

Standards

ASTM F877|R20:

Listings

-

Footnotes

-

Contact information

Uponor Inc.
5925 148th Street West
Apple Valley, MN 55124
T 800.321.4739
F 952.891.2008

Uponor Ltd.
6510 Kennedy Road
Mississauga, ON L5T 2X4
T 888.594.7726
F 800.638.9517