

TotalFit reducing tees

Project information

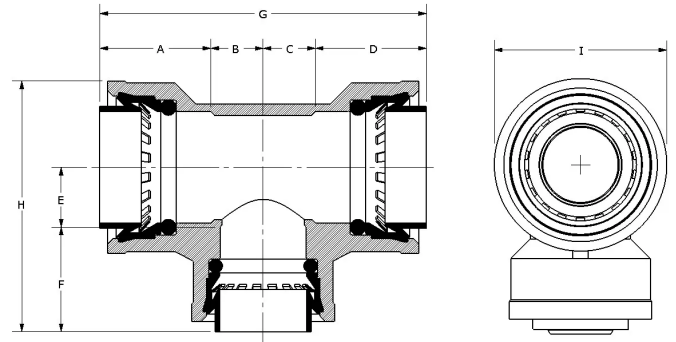
Job name:	Location:
Engineer:	Date submitted:
Contractor:	Submitted by:
Manufacturer's representative:	Approved by:

Technical data

Material	Engineered Polymer
Temp/pressure ratings	73 °F (23 °C) at 160 psi (11 bar) 180 °F (82 °C) at 100 psi (6.9 bar) 200 °F (93 °C) at 80 psi (5.5 bar)
Prop 65 label required?	No

Product information and application use

TotalFit™ is the professional-grade engineered polymer (EP) push-to connect solution that provides greater value for residential projects with the same versatility and speed as brass push-to-connect fittings for PEX, PE-RT, CPVC, and copper piping systems.



Part name	Part no.	A [inch]	B [inch]	C [inch]	D [inch]	E [inch]	F [inch]	G [inch]	H [inch]	I [inch]	End Type 1
TotalFit Reducing Tee, 1" x 1" x 1/2	TF4751150	1.134	0.396	0.396	1.134	0.61	0.913	3.059	2.404	1.76	TotalFit 1"
TotalFit Reducing Tee, 1" x 1" x 3/4	TF4751175	1.134	0.533	0.533	1.134	0.61	1.067	3.335	2.557	1.76	TotalFit 1"
TotalFit Reducing Tee, 3/4" x 3/4" x 1/2	TF4757550	1.067	0.392	0.392	1.067	0.51	0.913	2.917	2.152	1.457	TotalFit 3/4"
TotalFit Reducing Tee, 3/4" x 1/2" x 1/2	TF4757555	1.067	0.427	0.427	0.913	0.427	0.913	2.835	2.069	1.457	TotalFit 3/4"

Part name	Part no.	End Type 2	End Type 3	Weight per UOM [lbs/UOM]
TotalFit Reducing Tee, 1" x 1" x 1/2	TF4751150	TotalFit 1"	TotalFit 1/2"	0.14
TotalFit Reducing Tee, 1" x 1" x 3/4	TF4751175	TotalFit 1"	TotalFit 3/4"	0.16
TotalFit Reducing Tee, 3/4" x 3/4" x 1/2	TF4757550	TotalFit 3/4"	TotalFit 1/2"	0.1
TotalFit Reducing Tee, 3/4" x 1/2" x 1/2	TF4757555	TotalFit 1/2"	TotalFit 1/2"	0.09

Part name	Part no.	Codes	Standards	Listings
TotalFit reducing tees	All	UPC IMC IPC IRC UMC NPC of Canada CPC CMC	NSF/ANSI 14 NSF/ANSI/CAN 61 NSF/ANSI/CAN 372 ASTM F877 ASSE 1061	IAPMO K-13573 IAPMO K- 13572 IAPMO K-13571

Installation

Install on PEX, PE-RT, CPVC, and copper piping systems. Use deburr and depth tool to remove excess material or burrs and mark the appropriate depth on pipe. If using flexible PEX or PE-RT, install the insert inside the pipe first before making the connection. Refer to the Uponor TotalFit Instruction Sheet for additional information.

Related applications

Plumbing
Hydronic Heating & Cooling

Footnotes

-

Contact information

Uponor Inc.
5925 148th Street West
Apple Valley, MN 55124
T 800.321.4739
F 952.891.2008

Uponor Ltd.
6510 Kennedy Road
Mississauga, ON L5T 2X4
T 888.594.7726
F 800.638.9517