

ProPEX manifold fitting assemblies

Project information

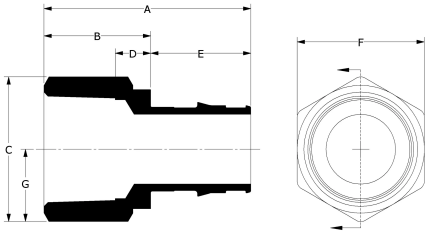
Job name:	Location:
Engineer:	Date submitted:
Contractor:	Submitted by:
Manufacturer's representative:	Approved by:

Technical data

Material	Brass
Prop 65 label required?	Yes

Product information and application use

The Uponor ProPEX® Fitting Assembly threads onto Uponor manifold loop outlets.1 The fitting features an R20 or R25 thread with a ProPEX connection to connect Uponor crosslinked polyethylene (PEX) tubing to the manifold in radiant heating and cooling applications.



Part name	Part no.	A [inch]	B [inch]	C [inch]	D [inch]	E [inch]	F [inch]	G [inch]	End Type 1	End Type 2	Operating Temperature 1 [°F]
3/8" ProPEX Fitting Assembly, R20 Thread	Q4020375	1.196	0.605	1.368	0.285	0.591	1.187	0.684	ProPEX 3/8"	ISO 228-G 3/4"	73
1/2" ProPEX Fitting Assembly, R20 Thread	Q4020500	1.321	0.612	1.368	0.285	0.709	1.187	0.684	ProPEX 1/2"	ISO 228-G 3/4"	-
5/8" ProPEX Fitting Assembly, R20 Thread	Q4020625	1.468	0.602	1.368	0.285	0.866	1.187	0.684	ProPEX 5/8"	ISO 228-G 3/4"	-
3/4" ProPEX Fitting Assembly, R20 Thread	Q4020750	1.55	0.605	1.368	0.285	0.945	1.187	0.684	-	-	-
5/8" ProPEX Fitting Assembly for Commercial Manifold, R25 thread	Q4050625	1.634	0.768	1.729	0.275	0.866	1.5	-	ProPEX 5/8"	ISO 228-G 1"	73
3/4" ProPEX Fitting Assembly for Commercial Manifold, R25 thread	Q4050750	1.713	0.768	1.729	0.275	0.945	1.5	-	ProPEX 3/4"	ISO 228-G 1"	73
1" ProPEX Fitting Assembly for Commercial Manifold, R25 thread	Q4051000	1.949	0.768	1.729	0.275	1.181	1.5	-	ProPEX 1"	ISO 228-G 1"	73

Part name	Part no.	Operating Temperature 2 [°F]	Operating Temperature 3 [°F]	Cv	Equivalent length through [ft]	Weight per UOM [lbs/UOM]
3/8" ProPEX Fitting Assembly, R20 Thread	Q4020375	180	200	-	-	0.18
1/2" ProPEX Fitting Assembly, R20 Thread	Q4020500	-	-	-	-	0.18
5/8" ProPEX Fitting Assembly, R20 Thread	Q4020625	-	-	-	-	0.2
3/4" ProPEX Fitting Assembly, R20 Thread	Q4020750	-	-	-	-	0.19
5/8" ProPEX Fitting Assembly for Commercial Manifold, R25 thread	Q4050625	180	200	7.75	4.13	0.37
3/4" ProPEX Fitting Assembly for Commercial Manifold, R25 thread	Q4050750	180	200	12.07	3.18	0.36
1" ProPEX Fitting Assembly for Commercial Manifold, R25 thread	Q4051000	180	200	23	3.22	0.38

Part name	Part no.	Codes	Standards	Listings
ProPEX manifold fitting assemblies	All	IMC IRC NBC of Canada UMC	ASTM F1960 CSA B137.5 ASTM F877	cNSFus-rfh ICC-ES-PMG 1012
In addition, the following parts have additional codes, standards, or listings:				
3/8" ProPEX Fitting Assembly, R20 Thread	Q4020375		R20: ISO 228-G ¾"	
5/8" ProPEX Fitting Assembly for Commercial Manifold, R25 thread	Q4050625		R25: ISO 228-G 1" NSF-14	IAPMO-ES ICC PMG 1006
3/4" ProPEX Fitting Assembly for Commercial Manifold, R25 thread	Q4050750		R25: ISO 228-G 1" NSF-14	IAPMO-ES ICC PMG 1006
1" ProPEX Fitting Assembly for Commercial Manifold, R25 thread	Q4051000		R25: ISO 228-G 1" NSF-14	IAPMO-ES ICC PMG 1006
Installation		Related applications		
R20 or R25 threads onto the Uponor manifold loop outlets. Compression end enables direct connection to Uponor PEX tubing. For more information, refer to the Uponor Radiant Floor Heating Installation Handbook. Accessories: Replacement O-ring for insert, R20 (A4021116); Replacement O-ring for insert, R25 (A4021000)		Radiant Heating and Cooling Systems		
Footnotes		Contact information		
-		Uponor Inc. 5925 148th Street West Apple Valley, MN 55124 T 800.321.4739 F 952.891.2008		Uponor Ltd. 6510 Kennedy Road Mississauga, ON L5T 2X4 T 888.594.7726 F 800.638.9517