

Metal bend supports

Project information

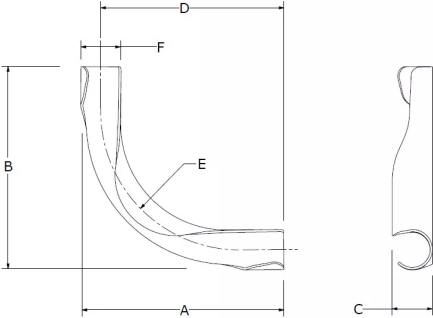
Job name:	Location:
Engineer:	Date submitted:
Contractor:	Submitted by:
Manufacturer's representative:	Approved by:

Technical data

Material Metal

Product information and application use

Snap the tubing into the Metal Bend Support at the beginning of the bend. Continue the bend through the support and snap the tubing into the support at the end of the bend. Refer to the Uponor AquaPEX® Professional Plumbing Installation Guide or the Uponor Radiant Floor Heating Installation Handbook for additional information.



Part name	Part no.	A [mm]	B [mm]	C [mm]	D [mm]	E [mm]	F [mm]	Subcomponent Material	Weight per UOM [kg/UOM]
3/8" Metal Bend Support	A5110375	80.68	80.68	16	72.56	46	16.25	SPHC steel	0.018
1/2" Metal Bend Support	A5110500	91.00	91.00	20.49	80.50	59.75	21.00	-	0.0453592909
5/8" Metal Bend Support	A5110625	126.50	126.50	25	114	78.20	26.24	-	0.074
3/4" Metal Bend Support	A5110750	163.31	163.31	30	148	134.01	29.90	-	0.145149731

Installation

Snap the tubing into the Metal Bend Support at the beginning of the bend. Continue the bend through the support and snap the tubing into the support at the end of the bend. Refer to the Uponor AquaPEX® Professional Plumbing Installation Guide or the Uponor Radiant Floor Heating Installation Handbook for additional information.

Related applications

- PEX-a Plumbing Systems
- Radiant Heating and Cooling Systems
- AquaSAFE™ Fire Safety Systems
- AquaSAFE™ Fire Safety Systems

Footnotes

-

Contact information

Uponor Inc.  
5925 148th Street West  
Apple Valley, MN 55124  
T 800.321.4739  
F 952.891.2008

Uponor Ltd.  
6510 Kennedy Road  
Mississauga, ON L5T 2X4  
T 888.594.7726  
F 800.638.9517