

ProPEX lead-free (LF) brass CPVC spigot adapters

Project information

Job name:	Location:
Engineer:	Date submitted:
Contractor:	Submitted by:
Manufacturer's representative:	Approved by:

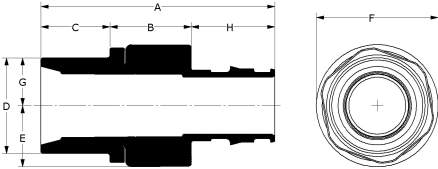
Technical data

Material	LF Brass
Subcomponent Material	Body: LF Brass and CPVC
	O-ring: EPDM
Temp/pressure ratings	73 °F (23 °C) at 160 psi (11 bar)
	180 °F (82 °C) at 100 psi (6.9 bar)
	200 °F (93 °C) at 80 psi (5.5 bar)
Prop 65 label required?	Yes

Product information and application use

ProPEX® Lead-free (LF) Brass CPVC Spigot Adapters transition Uponor PEX tubing to CPVC copper tube size (CTS) fittings for use in hot and cold domestic potable water systems and hydronic radiant heating and cooling systems. 1

Note: Temperature and pressure ratings stated are hydrostatic ratings. For domestic hot-water (DHW) and DHW recirculation installations, operating conditions should not exceed 140°F (60°C) at 80 psi (5.5 bar) in accordance with ASTM F2023. For additional information regarding application-specific temperature and pressure ratings, refer to the Uponor PEX Piping Systems Design and Installation Manual.



Part name	Part no.	A [mm]	B [mm]	C [mm]	D [mm]	E [mm]	F [mm]	G [mm]	H [mm]	End Type 1	End Type 2
ProPEX LF Brass x CPVC Spigot Adapter, 1 1/4" PEX x 1 1/4" CPVC (CTS)	CP4501313	94.11	28.96	28.45	34.87	26.80	53.59	17.44	36.70	ProPEX 1-1/4"	CPVC 1-1/4"
ProPEX LF Brass x CPVC Spigot Adapter, 1 1/2" PEX x 1 1/2" CPVC (CTS)	CP4501515	106.78	29.97	33.53	41.32	30.48	60.96	20.66	43.28	ProPEX 1-1/2"	CPVC 1-1/2"
ProPEX LF Brass x CPVC Spigot Adapter, 2" PEX x 2" CPVC (CTS)	CP4502020	134.29	36.07	43.69	53.93	38.10	76.20	26.96	54.53	ProPEX 2"	CPVC 2"

Part name	Part no.	Weight per UOM [kg/UOM]
ProPEX LF Brass x CPVC Spigot Adapter, 1 1/4" PEX x 1 1/4" CPVC (CTS)	CP4501313	0.272
ProPEX LF Brass x CPVC Spigot Adapter, 1 1/2" PEX x 1 1/2" CPVC (CTS)	CP4501515	0.34
ProPEX LF Brass x CPVC Spigot Adapter, 2" PEX x 2" CPVC (CTS)	CP4502020	0.635

Part name	Part no.	Codes	Standards	Listings
ProPEX lead-free (LF) brass CPVC spigot adapters	All	UPC IBC IRC IPC NPC of Canada UMC NSPC IMC	NSF-372 ASTM F877 ASTM F1960 CSA B137.5 ASTM D2846 NSF-61 NSF-14	IAPMO-ES HUD MR 1269 ICC-ES-PMG cNSFus-pw-G U.P.Code cQALus P321

Installation	Related applications
Use the appropriate Uponor ProPEX Ring for the tubing (sold separately). Refer to the Uponor AquaPEX® Professional Plumbing Installation Guide or Uponor Radiant Floor Heating Installation Handbook for additional information. Follow all CPVC instructions and guidelines for proper CPVC connections.	PEX-a Plumbing Systems Radiant Heating and Cooling Systems Permafrost Protection Systems Turf Conditioning Systems AquaSAFE™ Fire Safety Systems

Footnotes	Contact information
-	Uponor Inc. 5925 148th Street West Apple Valley, MN 55124 T 800.321.4739 F 952.891.2008 Uponor Ltd. 6510 Kennedy Road Mississauga, ON L5T 2X4 T 888.594.7726 F 800.638.9517