

ProPEX lead-free (LF) brass sweat adapters

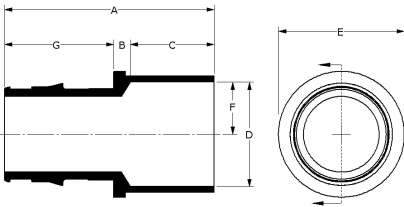
Project information	
Job name:	Location:
Engineer:	Date submitted:
Contractor:	Submitted by:
Manufacturer's representative:	Approved by:

Technical data	
Material	LF Brass
Temp/pressure ratings	73 °F (23 °C) at 160 psi (11 bar)
	180 °F (82 °C) at 100 psi (6.9 bar)
	200 °F (93 °C) at 80 psi (5.5 bar)
Prop 65 label required?	Yes

Product information and application use

ProPEX® lead-free (LF) brass sweat adapters transition Uponor PEX tubing to copper pipe for use in hot and cold domestic potable water systems, residential fire safety and hydronic radiant heating and cooling systems. 1 These adapters are safe for direct burial in soil.

Note: Temperature and pressure ratings stated are hydrostatic ratings. For domestic hot-water (DHW) and DHW recirculation installations, operating conditions should not exceed 140°F (60°C) at 80 psi (5.5 bar) in accordance with ASTM F2023. For additional information regarding application-specific temperature and pressure ratings, refer to the Uponor PEX Piping Systems Design and Installation Manual.



Part name	Part no.	A [mm]	B [mm]	C [mm]	D [mm]	E [mm]	F [mm]	G [mm]	Cv	End Type 1	End Type 2
ProPEX LF Brass Sweat Adapter, 3/8" PEX x 1/2" Copper	LF4513850	33.53	5.82	12.70	15.98	18.25	7.99	15.01	5.7	ProPEX 3/8"	Sweat 1/2"
ProPEX LF Brass Sweat Adapter, 3/4" PEX x 3/4" Copper	LF4517575	47.32	4.27	19.05	22.33	27.94	11.16	24	13.4	ProPEX 3/4"	Sweat 3/4"
ProPEX LF Brass Sweat Adapter, 1" PEX x 1" Copper	LF4511010	57.61	4.50	23.11	28.70	34.54	14.35	30	22.1	ProPEX 1"	Sweat 1"
ProPEX LF Brass Sweat Adapter, 1 1/4" PEX x 1 1/4" Copper	LF4511313	66.24	4.90	24.64	35.05	41.66	17.53	36.70	34	ProPEX 1-1/4"	Sweat 1-1/4"
ProPEX LF Brass Sweat Adapter, 1/2" PEX x 3/4" Copper	LF4515075	41.50	4.45	19.05	22.33	25.07	11.16	18	5.1	ProPEX 1/2"	Sweat 3/4"
ProPEX LF Brass Sweat Adapter, 1/2" PEX x 1/2" Copper	LF4515050	34.74	4.04	12.70	15.98	19.56	7.99	18	5.7	ProPEX 1/2"	Sweat 1/2"
ProPEX LF Brass Sweat Adapter, 3/4" PEX x 1/2" Copper	LF4517550	42.52	5.82	12.70	15.98	27.94	7.99	24	8.8	ProPEX 3/4"	Sweat 1/2"
ProPEX LF Brass Sweat Adapter, 3/4" PEX x 1" Copper	LF4517510	53.19	6.07	23.11	28.70	31.90	14.35	24	10.9	ProPEX 3/4"	Sweat 1"
ProPEX LF Brass Sweat Adapter, 1 1/2" PEX x 1 1/2" Copper	LF4511515	77.77	6.81	27.69	41.40	46.99	20.70	43.28	45.5	ProPEX 1-1/2"	Sweat 1-1/2"
ProPEX LF Brass Sweat Adapter, 2" PEX x 2" Copper	LF4512020	94.73	6.16	34.04	54.10	66.04	27.05	54.53	83.6	ProPEX 2"	Sweat 2"
ProPEX LF Brass Sweat Adapter, 2 1/2" PEX x 2 1/2" Copper	LF4512525	116.33	7.11	37.34	66.80	85.34	33.40	71.88	136.2	ProPEX 2-1/2"	Sweat 2-1/2"
ProPEX LF Brass Sweat Adapter, 3" PEX x 3" Copper	LF4513030	135.38	7.37	42.16	79.50	96.27	39.75	85.85	189.1	ProPEX 3"	Sweat 3"

Part name	Part no.	Weight per UOM [kg/UOM]
ProPEX LF Brass Sweat Adapter, 3/8" PEX x 1/2" Copper	LF4513850	0.023
ProPEX LF Brass Sweat Adapter, 3/4" PEX x 3/4" Copper	LF4517575	0.051
ProPEX LF Brass Sweat Adapter, 1" PEX x 1" Copper	LF4511010	0.092
ProPEX LF Brass Sweat Adapter, 1 1/4" PEX x 1 1/4" Copper	LF4511313	0.159
ProPEX LF Brass Sweat Adapter, 1/2" PEX x 3/4" Copper	LF4515075	0.039
ProPEX LF Brass Sweat Adapter, 1/2" PEX x 1/2" Copper	LF4515050	0.024
ProPEX LF Brass Sweat Adapter, 3/4" PEX x 1/2" Copper	LF4517550	0.045
ProPEX LF Brass Sweat Adapter, 3/4" PEX x 1" Copper	LF4517510	0.077
ProPEX LF Brass Sweat Adapter, 1 1/2" PEX x 1 1/2"	LF4511515	0.227

Copper		
ProPEX LF Brass Sweat Adapter, 2" PEX x 2" Copper	LF4512020	0.454
ProPEX LF Brass Sweat Adapter, 2 1/2" PEX x 2 1/2" Copper	LF4512525	0.862
ProPEX LF Brass Sweat Adapter, 3" PEX x 3" Copper	LF4513030	1.293

Part name	Part no.	Codes	Standards	Listings
ProPEX lead-free (LF) brass sweat adapters	All	UPC IBC IRC IPC NPC of Canada UMC NSPC IMC	NSF-372 ASTM F877 ASTM F1960 CSA B137.5 NSF-61 NSF-14	IAPMO-ES ICC-ES-PMG U.P.Code
In addition, the following parts have additional codes, standards, or listings:				
ProPEX LF Brass Sweat Adapter, 3/8" PEX x 1/2" Copper	LF4513850			cNSFus-pw-G
ProPEX LF Brass Sweat Adapter, 3/4" PEX x 3/4" Copper	LF4517575		UL 1821	cNSFus-pw-fs-G
ProPEX LF Brass Sweat Adapter, 1" PEX x 1" Copper	LF4511010		UL 1821	cNSFus-pw-fs-G
ProPEX LF Brass Sweat Adapter, 1 1/4" PEX x 1 1/4" Copper	LF4511313		UL 1821	cNSFus-pw-fs-G
ProPEX LF Brass Sweat Adapter, 1/2" PEX x 3/4" Copper	LF4515075			cNSFus-pw-G
ProPEX LF Brass Sweat Adapter, 1/2" PEX x 1/2" Copper	LF4515050			cNSFus-pw-G
ProPEX LF Brass Sweat Adapter, 3/4" PEX x 1/2" Copper	LF4517550			cNSFus-pw-G
ProPEX LF Brass Sweat Adapter, 3/4" PEX x 1" Copper	LF4517510			cNSFus-pw-G
ProPEX LF Brass Sweat Adapter, 1 1/2" PEX x 1 1/2" Copper	LF4511515			cNSFus-pw-G
ProPEX LF Brass Sweat Adapter, 2" PEX x 2" Copper	LF4512020			cNSFus-pw-G
ProPEX LF Brass Sweat Adapter, 2 1/2" PEX x 2 1/2" Copper	LF4512525			cNSFus-pw-G
ProPEX LF Brass Sweat Adapter, 3" PEX x 3" Copper	LF4513030			cNSFus-pw-G

Installation	Related applications
Use the appropriate Uponor ProPEX rings for the tubing (sold separately). Do not solder within 18" of ProPEX fittings. Refer to the AquaPEX® Professional Plumbing Installation Guide, Radiant Floor Heating Installation Handbook or AquaSAFETM Residential Fire Sprinkler Installation Guide for additional information.	Radiant Heating and Cooling Systems
	Permafrost Protection Systems
	Turf Conditioning Systems
	AquaSAFE™ Fire Safety Systems

Footnotes	Contact information
-	<div> <div> Uponor Inc. 5925 148th Street West Apple Valley, MN 55124 T 800.321.4739 F 952.891.2008 </div> <div> Uponor Ltd. 6510 Kennedy Road Mississauga, ON L5T 2X4 T 888.594.7726 F 800.638.9517 </div> </div>