

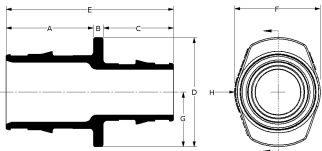
ProPEX lead-free (LF) brass and brass coupling

Project information	
Job name:	Location:
Engineer:	Date submitted:
Contractor:	Submitted by:
Manufacturer's representative:	Approved by:

Technical data	
Temp/pressure ratings	73 °F (23 °C) at 160 psi (11 bar) 180 °F (82 °C) at 100 psi (6.9 bar) 200 °F (93 °C) at 80 psi (5.5 bar)
Prop 65 label required?	Yes
Product information and application use	

ProPEX® lead-free (LF) brass couplings are available for use in hot and cold domestic potable water and hydronic heating and cooling systems.1 The coupling features the Uponor ProPEX fitting for connections to Wirsbo hePEX™ tubing or Uponor AquaPEX® tubing. Couplings are safe for direct burial in soil.

Note: Temperature and pressure ratings stated are hydrostatic ratings. For domestic hot-water (DHW) and DHW recirculation installations, operating conditions should not exceed 140°F (60°C) at 80 psi (5.5 bar) in accordance with ASTM F2023. For additional information regarding application-specific temperature and pressure ratings, refer to the Uponor PEX Piping Systems Design and Installation Manual.



Part name	Part no.	A [mm]	B [mm]	C [mm]	D [mm]	E [mm]	F [mm]	G [mm]	H [mm]	Material group	End Type 1
ProPEX LF Brass Coupling, 3/8" PEX x 1/2" PEX	LF4543850	18	3.18	15.01	18.80	36.19	18.80	9.40	9.40	LF Brass	ProPEX 3/8"
ProPEX Brass Coupling, 5/8" PEX x 5/8" PEX	Q4546363	22	3.18	22	23.88	47.17	23.88	11.94	11.94	Brass	ProPEX 5/8"

Part name	Part no.	End Type 2	Weight per UOM [kg/UOM]
ProPEX LF Brass Coupling, 3/8" PEX x 1/2" PEX	LF4543850	ProPEX 1/2"	0.023
ProPEX Brass Coupling, 5/8" PEX x 5/8" PEX	Q4546363	ProPEX 5/8"	0.036

Part name	Part no.	Codes	Standards	Listings
ProPEX lead-free (LF) brass and brass coupling	All	IBC IRC NPC of Canada UMC IMC	ASTM F877 ASTM F1960 CSA B137.5 NSF-14	IAPMO-ES ICC-ES-PMG
In addition, the following parts have additional codes, standards, or listings:				
ProPEX LF Brass Coupling, 3/8" PEX x 1/2" PEX	LF4543850	UPC IPC NSPC	NSF-372 NSF-61	cNSFus-pw-G U.P.Code
ProPEX Brass Coupling, 5/8" PEX x 5/8" PEX	Q4546363			cNSFus-rfh

Installation	Related applications
ProPEX tools and ProPEX rings (sold separately) are required for connecting the PEX tubing. Use the appropriately sized Uponor ProPEX ring for tubing connections. For more information, refer to the Uponor AquaPEX professional plumbing installation guide, the Uponor AquaSAFETM residential fire sprinkler installation guide or the Uponor radiant floor heating installation handbook.	PEX-a Plumbing Systems Uponor Residential Fire Safety Systems Radiant Heating and Cooling Systems Permafrost Protection Systems Turf Conditioning Systems

Footnotes	Contact information
-	Uponor Inc. 5925 148th Street West Apple Valley, MN 55124 T 800.321.4739 F 952.891.2008  Uponor Ltd. 6510 Kennedy Road Mississauga, ON L5T 2X4 T 888.594.7726 F 800.638.9517