

ProPEX lead-free (LF) brass copper press fitting adapters

Project information

Job name:	Location:
Engineer:	Date submitted:
Contractor:	Submitted by:
Manufacturer's representative:	Approved by:

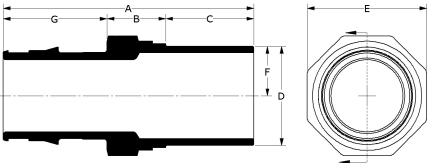
Technical data

Material	LF Brass
Temp/pressure ratings	73 °F (23 °C) at 160 psi (11 bar) 180 °F (82 °C) at 100 psi (6.9 bar) 200 °F (93 °C) at 80 psi (5.5 bar)
Prop 65 label required?	Yes

Product information and application use

Uponor ProPEX®1 lead-free (LF) brass copper press fitting adapters transition copper fittings to Uponor PEX. The adapters are approved for use in hot and cold potable water and hydronic heating and cooling systems.

Note: Temperature and pressure ratings stated are hydrostatic ratings. For domestic hot-water (DHW) and DHW recirculation installations, operating conditions should not exceed 140°F (60°C) at 80 psi (5.5 bar) in accordance with ASTM F2023. For additional information regarding application-specific temperature and pressure ratings, refer to the Uponor PEX Piping Systems Design and Installation Manual.



Part name	Part no.	A [mm]	B [mm]	C [mm]	D [mm]	E [mm]	F [mm]	G [mm]	Cv	End Type 1	End Type 2
ProPEX LF Brass Copper Press Fitting Adapter, 1/2" PEX x 1/2" Copper	LFP4505050	51.04	14.04	19	15.85	23	7.92	18	5.6	ProPEX 1/2"	Copper Press 1/2"
ProPEX LF Brass Copper Press Fitting Adapter, 3/4" PEX x 3/4" Copper	LFP4507575	61.06	15.06	22	22.20	27.50	11.10	24	12.8	ProPEX 3/4"	Copper Press 3/4"
ProPEX LF Brass Copper Press Fitting Adapter, 1" PEX x 1" Copper	LFP4501010	72.42	17.02	25.40	28.58	34.50	14.29	30	21.4	ProPEX 1"	Copper Press 1"
ProPEX LF Brass Copper Press Fitting Adapter, 1 1/4" PEX x 1 1/4" Copper	LFP4501313	83.54	19.53	27.31	34.90	41.50	17.45	36.70	31.5	ProPEX 1-1/4"	Copper Press 1-1/4"
ProPEX LF Brass Copper Press Fitting Adapter, 1 1/2" PEX x 1 1/2" Copper	LFP4501515	98.55	18.77	36.50	41.28	47	20.64	43.28	43.5	ProPEX 1-1/2"	Copper Press 1-1/2"
ProPEX LF Brass Copper Press Fitting Adapter, 2" PEX x 2" Copper	LFP4502020	118.12	23.59	40	53.98	65	26.99	54.53	81.5	ProPEX 2"	Copper Press 2"
ProPEX LF Brass Copper Press Fitting Adapter, 2 1/2" PEX x 2 1/2" Copper	LFP4502525	148.59	35.71	41	66.65	80	33.32	71.88	137	ProPEX 2-1/2"	Copper Press 2-1/2"
ProPEX LF Brass Copper Press Fitting Adapter, 3" PEX x 3" Copper	LFP4503030	169.44	37.59	46	79.38	92	39.69	85.85	187.1	ProPEX 3"	Copper Press 3"

Part name	Part no.	Weight per UOM [kg/UOM]
ProPEX LF Brass Copper Press Fitting Adapter, 1/2" PEX x 1/2" Copper	LFP4505050	0.045
ProPEX LF Brass Copper Press Fitting Adapter, 3/4" PEX x 3/4" Copper	LFP4507575	0.073
ProPEX LF Brass Copper Press Fitting Adapter, 1" PEX x 1" Copper	LFP4501010	0.118
ProPEX LF Brass Copper Press Fitting Adapter, 1 1/4" PEX x 1 1/4" Copper	LFP4501313	0.2
ProPEX LF Brass Copper Press Fitting Adapter, 1 1/2" PEX x 1 1/2" Copper	LFP4501515	0.281
ProPEX LF Brass Copper Press Fitting Adapter, 2" PEX x 2" Copper	LFP4502020	0.59
ProPEX LF Brass Copper Press Fitting Adapter, 2 1/2" PEX x 2 1/2" Copper	LFP4502525	1.207

ProPEX LF Brass Copper Press Fitting Adapter, 3" PEX x 3" Copper		LFP4503030		1.624
Part name	Part no.	Codes	Standards	Listings
ProPEX lead-free (LF) brass copper press fitting adapters	All	UPC IBC IRC IPC NPC of Canada UMC NSPC IMC	ASME B16.51 IAPMO PS 117 NSF-372 ASTM F877 ICC-ES LC1002 ASTM F1960 CSA B137.5 NSF-61 NSF-14	IAPMO-ES cNSFus-pw-G U.P.Code ICC-PMG-1412
Installation		Related applications		
Use ProPEX tool and ProPEX rings (sold separately) for connecting the PEX pipe. For more information, refer to the Uponor Piping Pocket Guide. Follow press tool manufacturers' install instructions for the male or female press end of the adapter.		PEX-a Plumbing Systems Hydronic heating and cooling systems Permafrost Protection Systems		
Footnotes		Contact information		
-		Uponor Inc. 5925 148th Street West Apple Valley, MN 55124 T 800.321.4739 F 952.891.2008		
		Uponor Ltd. 6510 Kennedy Road Mississauga, ON L5T 2X4 T 888.594.7726 F 800.638.9517		