

EP flow-through multi-port tees

Project information

| | |
|--------------------------------|-----------------|
| Job name: | Location: |
| Engineer: | Date submitted: |
| Contractor: | Submitted by: |
| Manufacturer's representative: | Approved by: |

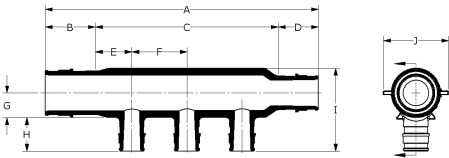
Technical data

| | |
|-----------------------|-------------------------------------|
| Material | Engineered Polymer |
| End type 3 | ProPEX 1/2" |
| Temp/pressure ratings | 73 °F (23 °C) at 160 psi (11 bar) |
| | 180 °F (82 °C) at 100 psi (6.9 bar) |
| | 200 °F (93 °C) at 80 psi (5.5 bar) |

Product information and application use

Engineered polymer (EP) flow-through multi-port tees feature 3/4" or 1" ProPEX® inlets with 1/2" ProPEX branch outlets.1 The tees are made of EP, a high-performance material used in demanding, hot-water applications

Note: Temperature and pressure ratings stated are hydrostatic ratings. For domestic hot-water (DHW) and DHW recirculation installations, operating conditions should not exceed 140°F (60°C) at 80 psi (5.5 bar) in accordance with ASTM F2023. For additional information regarding application-specific temperature and pressure ratings, refer to the Uponor PEX Piping Systems Design and Installation Manual.



| Part name | Part no. | A [mm] | B [mm] | C [mm] | D [mm] | E [mm] | F [mm] | G [mm] | H [mm] | I [mm] | J [mm] |
|--|----------|--------|--------|--------|--------|--------|--------|--------|--------|--------|--------|
| EP Flow-through Multi-port Tee, 2 (1/2") outlets, 3/4" x 3/4" ProPEX | Q2227557 | 112.01 | 24.26 | 63.50 | 24.26 | 15.88 | 31.75 | 13.72 | 18.26 | 43.09 | 30.99 |
| EP Flow-through Multi-port Tee, 3 (1/2") outlets, 3/4" x 3/4" ProPEX | Q2237557 | 147.07 | 24.26 | 98.55 | 24.26 | 17.53 | 31.75 | 13.72 | 18.26 | 43.09 | 30.99 |
| EP Flow-through Multi-port Tee, 3 (1/2") outlets, 1" x 3/4" ProPEX | Q2231057 | 157.38 | 30.25 | 102.87 | 24.26 | 19.69 | 31.75 | 15.24 | 18.26 | 47.73 | 37.59 |
| EP Flow-through Multi-port Tee, 4 (1/2") outlets, 3/4" x 3/4" ProPEX | Q2247557 | 197.99 | 24.26 | 149.48 | 24.26 | 17.59 | 38.10 | 11.37 | 18.26 | 44.85 | 30.45 |
| EP Flow-through Multi-port Tee, 4 (1/2") outlets, 1" x 3/4" ProPEX | Q2241057 | 181.51 | 30.25 | 127 | 24.26 | 15.88 | 31.75 | 14.48 | 18.26 | 51.04 | 36.60 |
| EP Flow-through Multi-port Tee, 6 (1/2") outlets, 3/4" x 3/4" ProPEX | Q2267557 | 239.01 | 24.26 | 190.50 | 24.26 | 15.88 | 31.75 | 11.62 | 18.26 | 41.25 | 29.97 |
| EP Flow-through Multi-port Tee, 6 (1/2") outlets, 1" x 3/4" ProPEX | Q2261057 | 245.01 | 30.25 | 190.50 | 24.26 | 15.88 | 31.75 | 14.48 | 18.26 | 51.04 | 36.60 |
| EP Flow-through Multi-port Tee, 6 (1/2") outlets, 1" x 1" ProPEX | Q2261051 | 251 | 30.25 | 190.50 | 30.25 | 15.88 | 31.75 | 14.48 | 18.26 | 51.04 | 36.60 |
| EP Flow-through Multi-port Tee, 4 (1/2") outlets, 1" x 1" ProPEX | Q2241051 | 195.12 | 30.25 | 134.62 | 30.25 | 19.69 | 31.75 | 15.24 | 18.26 | 47.73 | 37.59 |

| Part name | Part no. | Cv Through | End Type 1 | End Type 2 | End Type 4 | Weight per UOM [kg/UOM] |
|--|----------|------------|-------------|-------------|------------|-------------------------|
| EP Flow-through Multi-port Tee, 2 (1/2") outlets, 3/4" x 3/4" ProPEX | Q2227557 | 15.3 | ProPEX 3/4" | ProPEX 3/4" | - | 0.032 |
| EP Flow-through Multi-port Tee, 3 (1/2") outlets, 3/4" x 3/4" ProPEX | Q2237557 | 14.2 | ProPEX 3/4" | ProPEX 3/4" | ProPEX | 0.045 |
| EP Flow-through Multi-port Tee, 3 (1/2") outlets, 1" x 3/4" ProPEX | Q2231057 | 11.6 | ProPEX 1" | ProPEX 3/4" | - | 0.1 |
| EP Flow-through Multi-port Tee, 4 (1/2") outlets, 3/4" x 3/4" ProPEX | Q2247557 | 13.8 | ProPEX 3/4" | ProPEX 3/4" | ProPEX | 0.064 |
| EP Flow-through Multi-port Tee, 4 (1/2") outlets, 1" x 3/4" ProPEX | Q2241057 | 11.7 | ProPEX 1" | ProPEX 3/4" | - | 0.077 |
| EP Flow-through Multi-port Tee, 6 (1/2") outlets, 3/4" x 3/4" ProPEX | Q2267557 | 13.2 | ProPEX 3/4" | ProPEX 3/4" | - | 0.078 |
| EP Flow-through Multi-port Tee, 6 (1/2") outlets, 1" x 3/4" ProPEX | Q2261057 | 11.8 | ProPEX 1" | ProPEX 3/4" | - | 0.109 |
| EP Flow-through Multi-port Tee, 6 (1/2") outlets, 1" x 1" ProPEX | Q2261051 | 25.1 | ProPEX 1" | ProPEX 1" | - | 0.113 |
| EP Flow-through Multi-port Tee, 4 (1/2") outlets, 1" x 1" ProPEX | Q2241051 | 29.3 | ProPEX 1" | ProPEX 1" | - | 0.082 |

| Part name | Part no. | Codes | Standards | Listings |
|---|----------|---|---|---|
| EP flow-through multi-port tees | All | UPC IBC IRC IPC NPC of Canada UMC NSPC IMC | ASTM E814 ULC S115 ASTM F877 ASTM F1960 CSA B137.5 ULC S102.2 ASTM E119 UL 263 NSF-61 ULC S101 NSF-14 | IAPMO-ES HUD MR 1269 ICC-ES-PMG cNSFus-pw UL U.P.Code cQAlus P321 |
| Installation | | Related applications | | |
| For a mounting bracket, use any product designed to mount 1" copper pipe for the ¾" EP flow-through multi-port tees or 1¼" copper pipe for the 1" EP flow-through multi-port tees. For more information, refer to the Uponor Piping Systems Installation Guide. | | PEX-a Plumbing Systems | | |
| Footnotes | | Contact information | | |
| - | | Uponor Inc. 5925 148th Street West Apple Valley, MN 55124 T 800.321.4739 F 952.891.2008 | | |
| | | Uponor Ltd. 6510 Kennedy Road Mississauga, ON L5T 2X4 T 888.594.7726 F 800.638.9517 | | |