

Commercial EP flow-through multi-port tees

Project Information

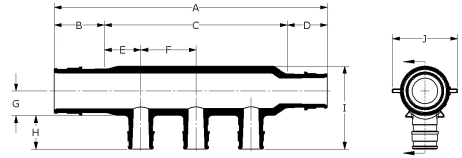
| | |
|---------------------------------|-----------------|
| Job name : | Location : |
| Engineer : | Date submitted: |
| Contractor : | Submitted by: |
| Manufacturer's representative : | Approved by : |

Technical data

| | |
|-----------------------|-------------------------------------|
| Material | Engineered Polymer |
| Loop Cv | 9.2 Cv |
| Temp/pressure ratings | 73 °F (23 °C) at 160 psi (11 bar) |
| | 180 °F (82 °C) at 100 psi (6.9 bar) |
| | 200 °F (93 °C) at 80 psi (5.5 bar) |

Product information and application use

Commercial engineered polymer (EP) flow-through multi-port tees feature 1/4" or 2" ProPEX® inlets with 3/4" or 1" ProPEX branch outlets.1 The tees are made of engineered polymer (EP), a high-performance material used in demanding, hot-water applications.



| Part name | Part no. | A [inch] | B [inch] | C [inch] | D [inch] | E [inch] | F [inch] | G [inch] | H [inch] | I [inch] | J [inch] |
|--|----------|----------|----------|----------|----------|----------|----------|----------|----------|----------|----------|
| EP Flow-through Multi-port Tee, 3 (3/4") outlets, 1 1/4" x 1 1/4" ProPEX | Q2231373 | 8.19 | 1.445 | 5.3 | 1.445 | 0.9 | 1.75 | 0.7 | 0.955 | 2.336 | 1.82 |
| EP Flow-through Multi-port Tee, 3 (1") outlets, 2" x 2" ProPEX | Q2232102 | 10.554 | 2.157 | 6.24 | 2.157 | 1.12 | 2.0 | 1.06 | 1.191 | 3.291 | 2.82 |

| Part name | Part no. | Cv Through | Weight per UOM [lbs/UOM] | Equivalent length branch [ft] | Equivalent length through [ft] | End Type 1 | End Type 2 | End Type 3 |
|--|----------|------------|--------------------------|-------------------------------|--------------------------------|---------------|---------------|-------------|
| EP Flow-through Multi-port Tee, 3 (3/4") outlets, 1 1/4" x 1 1/4" ProPEX | Q2231373 | 42.5 | 0.22 | 4.87 | 2.02 | ProPEX 1-1/4" | ProPEX 1-1/4" | ProPEX 3/4" |
| EP Flow-through Multi-port Tee, 3 (1") outlets, 2" x 2" ProPEX | Q2232102 | 99 | 0.55 | - | 3.87 | ProPEX 2" | ProPEX 2" | ProPEX 1" |

Installation

Properly mount the multi-port tee by securing all adjoining PEX pipes to the framing or support structure within 6" of each ProPEX connection. For more information, refer to the Uponor Piping Systems Installation Guide.

Related applications

PEX-a Plumbing Systems

Codes

UPC|IBC|IRC|IPC|NPC of Canada|UMC|NSPC|IMC

Standards

ASTM E814|ULC S115|ASTM F877|ASTM F1960|CSA B137.5|ULC S102.2|ASTM E119|UL 263|NSF-61|ULC S101|NSF-14

Listings

IAPMO-ES|HUD MR 1269|ICC-ES-PMG|cNSFus-pw|UL|U.P.Code|QAIus P321

Trademark information

ProPEX® is a registered trademark of Uponor Inc. ProPEX™ is a trademark of Uponor Ltd.

Contact information

Uponor Inc.
5925 148th Street West
Apple Valley, MN 55124
T 800.321.4739
F 952.891.2008

Uponor Ltd.
6510 Kennedy Road
Mississauga, ON L5T 2X4
T 888.594.7726
F 800.636.9517