

ProPEX manifold fitting assemblies

Project information

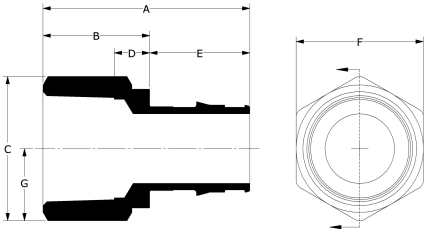
| | |
|--------------------------------|-----------------|
| Job name: | Location: |
| Engineer: | Date submitted: |
| Contractor: | Submitted by: |
| Manufacturer's representative: | Approved by: |

Technical data

| | |
|-------------------------|-------|
| Material | Brass |
| Prop 65 label required? | Yes |

Product information and application use

The Uponor ProPEX® Fitting Assembly threads onto Uponor manifold loop outlets.1 The fitting features an R20 or R25 thread with a ProPEX connection to connect Uponor crosslinked polyethylene (PEX) tubing to the manifold in radiant heating and cooling applications.



| Part name | Part no. | A [mm] | B [mm] | C [mm] | D [mm] | E [mm] | F [mm] | G [mm] | End Type 1 | End Type 2 | Cv |
|--|----------|--------|--------|--------|--------|--------|--------|--------|-------------|----------------|-------|
| 3/8" ProPEX Fitting Assembly, R20 Thread | Q4020375 | 30.38 | 15.37 | 34.75 | 7.24 | 15.01 | 30.16 | 17.38 | ProPEX 3/8" | ISO 228-G 3/4" | - |
| 1/2" ProPEX Fitting Assembly, R20 Thread | Q4020500 | 33.55 | 15.54 | 34.75 | 7.24 | 18 | 30.16 | 17.38 | ProPEX 1/2" | ISO 228-G 3/4" | - |
| 5/8" ProPEX Fitting Assembly, R20 Thread | Q4020625 | 37.29 | 15.29 | 34.75 | 7.24 | 22 | 30.16 | 17.38 | ProPEX 5/8" | ISO 228-G 3/4" | - |
| 3/4" ProPEX Fitting Assembly, R20 Thread | Q4020750 | 39.37 | 15.37 | 34.75 | 7.24 | 24 | 30.16 | 17.38 | - | - | - |
| 5/8" ProPEX Fitting Assembly for Commercial Manifold, R25 thread | Q4050625 | 41.50 | 19.51 | 43.92 | 6.99 | 22 | 38.10 | - | ProPEX 5/8" | ISO 228-G 1" | 7.75 |
| 3/4" ProPEX Fitting Assembly for Commercial Manifold, R25 thread | Q4050750 | 43.51 | 19.51 | 43.92 | 6.99 | 24 | 38.10 | - | ProPEX 3/4" | ISO 228-G 1" | 12.07 |
| 1" ProPEX Fitting Assembly for Commercial Manifold, R25 thread | Q4051000 | 49.50 | 19.51 | 43.92 | 6.99 | 30 | 38.10 | - | ProPEX 1" | ISO 228-G 1" | 23 |

| Part name | Part no. | Weight per UOM [kg/UOM] |
|--|----------|-------------------------|
| 3/8" ProPEX Fitting Assembly, R20 Thread | Q4020375 | 0.082 |
| 1/2" ProPEX Fitting Assembly, R20 Thread | Q4020500 | 0.082 |
| 5/8" ProPEX Fitting Assembly, R20 Thread | Q4020625 | 0.091 |
| 3/4" ProPEX Fitting Assembly, R20 Thread | Q4020750 | 0.086 |
| 5/8" ProPEX Fitting Assembly for Commercial Manifold, R25 thread | Q4050625 | 0.168 |
| 3/4" ProPEX Fitting Assembly for Commercial Manifold, R25 thread | Q4050750 | 0.164 |
| 1" ProPEX Fitting Assembly for Commercial Manifold, R25 thread | Q4051000 | 0.171 |

| Part name | Part no. | Codes | Standards | Listings |
|--|----------|---|---------------------------------|---|
| ProPEX manifold fitting assemblies | All | IMC IRC NBC of Canada UMC | ASTM F1960 CSA B137.5 ASTM F877 | cNSFus-rfh ICC-ES-PMG 1012 |
| In addition, the following parts have additional codes, standards, or listings: | | | | |
| 3/8" ProPEX Fitting Assembly, R20 Thread | Q4020375 | | R20: ISO 228-G ¾" | |
| 5/8" ProPEX Fitting Assembly for Commercial Manifold, R25 thread | Q4050625 | | R25: ISO 228-G 1" NSF-14 | IAPMO-ES ICC PMG 1006 |
| 3/4" ProPEX Fitting Assembly for Commercial Manifold, R25 thread | Q4050750 | | R25: ISO 228-G 1" NSF-14 | IAPMO-ES ICC PMG 1006 |
| 1" ProPEX Fitting Assembly for Commercial Manifold, R25 thread | Q4051000 | | R25: ISO 228-G 1" NSF-14 | IAPMO-ES ICC PMG 1006 |
| Installation | | Related applications | | |
| R20 or R25 threads onto the Uponor manifold loop outlets. Compression end enables direct connection to Uponor PEX tubing. For more information, refer to the Uponor Radiant Floor Heating Installation Handbook. Accessories: Replacement O-ring for insert, R20 (A4021116); Replacement O-ring for insert, R25 (A4021000) | | Radiant Heating and Cooling Systems | | |
| Footnotes | | Contact information | | |
| - | | Uponor Inc. 5925 148th Street West Apple Valley, MN 55124 T 800.321.4739 F 952.891.2008 | | Uponor Ltd. 6510 Kennedy Road Mississauga, ON L5T 2X4 T 888.594.7726 F 800.638.9517 |