

ProPEX brass fitting adapters

Project information

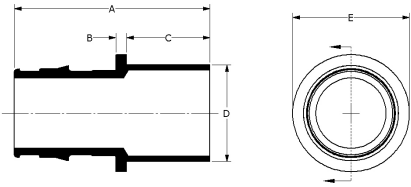
Job name:	Location:
Engineer:	Date submitted:
Contractor:	Submitted by:
Manufacturer's representative:	Approved by:

Technical data

Material	Brass
Temp/pressure ratings	73 °F (23 °C) at 160 psi (11 bar) 180 °F (82 °C) at 100 psi (6.9 bar) 200 °F (93 °C) at 80 psi (5.5 bar)
Prop 65 label required?	Yes

Product information and application use

ProPEX® Brass Fitting Adapters transition crosslinked polyethylene (PEX) tubing to copper fittings. 1 These adapters are approved for use in hydronic radiant heating systems. One end of the adapter is manufactured with the Uponor ProPEX Fitting for connections to Wirsbo hePEX™ tubing. These adapters are safe for direct burial in soil.



Part name	Part no.	A [mm]	B [mm]	C [mm]	D [mm]	E [mm]	F [mm]	G [mm]	End Type 1	End Type 2	Cv
ProPEX Brass Fitting Adapter, 1/2" PEX x 1/2" Copper	Q5505050	35.40	3.18	14.22	15.88	19.56	7.94	18	ProPEX 1/2"	Sweat 1/2"	7.7
ProPEX Brass Fitting Adapter, 5/8" PEX x 1/2" Copper	Q4506350	39.40	3.18	14.22	15.85	23.88	7.92	22	ProPEX 5/8"	Sweat 1/2"	-
ProPEX Brass Fitting Adapter, 5/8" PEX x 3/4" Copper	Q4506375	45.75	3.18	20.57	22.20	23.88	11.10	22	ProPEX 5/8"	Sweat 3/4"	-
ProPEX Brass Fitting Adapter, 3/4" PEX x 1/2" Copper	Q5507550	41.40	3.18	14.22	15.85	27.94	7.92	24	ProPEX 3/4"	Sweat 1/2"	8.8
ProPEX Brass Fitting Adapter, 3/4" PEX x 3/4" Copper	Q5507575	47.75	3.18	20.57	22.20	27.94	11.10	24	ProPEX 3/4"	Sweat 3/4"	15.7
ProPEX Brass Fitting Adapter, 3/4" PEX x 1" Copper	Q5507510	51.82	2.80	25.01	28.58	29.21	14.29	24	ProPEX 3/4"	Sweat 1"	11.4
ProPEX Brass Fitting Adapter, 1" PEX x 1" Copper	Q5501010	57.81	3.18	24.64	28.58	34.54	14.29	30	ProPEX 1"	Sweat 1"	30.5
ProPEX Brass Fitting Adapter, 1 1/4" PEX x 1 1/4" Copper	Q5501313	66.04	3.18	26.16	34.93	43.69	17.46	36.70	ProPEX 1-1/4"	Sweat 1-1/4"	34
ProPEX Brass Fitting Adapter, 1 1/2" PEX x 1 1/2" Copper	Q5501515	75.92	3.18	29.46	41.28	48.26	20.64	43.28	ProPEX 1-1/2"	Sweat 1-1/2"	63.7
ProPEX Brass Fitting Adapter, 2" PEX x 2" Copper	Q5502020	96.70	6.35	35.81	53.98	68.07	26.99	54.53	ProPEX 2"	Sweat 2"	150.7

Part name	Part no.	Weight per UOM [kg/UOM]
ProPEX Brass Fitting Adapter, 1/2" PEX x 1/2" Copper	Q5505050	0.025
ProPEX Brass Fitting Adapter, 5/8" PEX x 1/2" Copper	Q4506350	0.028
ProPEX Brass Fitting Adapter, 5/8" PEX x 3/4" Copper	Q4506375	0.05
ProPEX Brass Fitting Adapter, 3/4" PEX x 1/2" Copper	Q5507550	0.041
ProPEX Brass Fitting Adapter, 3/4" PEX x 3/4" Copper	Q5507575	0.052
ProPEX Brass Fitting Adapter, 3/4" PEX x 1" Copper	Q5507510	0.065
ProPEX Brass Fitting Adapter, 1" PEX x 1" Copper	Q5501010	0.087
ProPEX Brass Fitting Adapter, 1 1/4" PEX x 1 1/4" Copper	Q5501313	0.151
ProPEX Brass Fitting Adapter, 1 1/2" PEX x 1 1/2" Copper	Q5501515	0.207
ProPEX Brass Fitting Adapter, 2" PEX x 2" Copper	Q5502020	0.492

Part name	Part no.	Codes	Standards	Listings
ProPEX brass fitting adapters	All	IMC IBC IRC NPC of Canada UMC	ASTM F1960 CSA B137.5 NSF-14 ASTM F877	IAPMO-ES ICC-ES-PMG cNSFus-rfh
Installation		Related applications		
ProPEX Tool and ProPEX Rings (sold separately) are required for connecting the PEX tubing. Do not solder within 18 inches of the ProPEX Fitting. For more information, refer to the Uponor Radiant Floor Heating Installation Handbook.		Radiant Heating and Cooling Systems		
Footnotes		Contact information		
-		Uponor Inc. 5925 148th Street West Apple Valley, MN 55124 T 800.321.4739 F 952.891.2008		
		Uponor Ltd. 6510 Kennedy Road Mississauga, ON L5T 2X4 T 888.594.7726 F 800.638.9517		