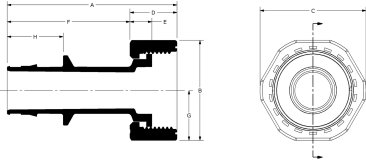


ProPEX engineered polymer (EP) water meter fittings

| Project information            |                 |
|--------------------------------|-----------------|
| Job name:                      | Location:       |
| Engineer:                      | Date submitted: |
| Contractor:                    | Submitted by:   |
| Manufacturer's representative: | Approved by:    |

| Technical data          |  |
|-------------------------|--|
| Material                | Engineered Polymer   |
| Temp/pressure ratings   | 73 °F (23 °C) at 160 psi (11 bar)<br>180 °F (82 °C) at 100 psi (6.9 bar)<br>200 °F (93 °C) at 80 psi (5.5 bar) |
| Prop 65 label required? | Yes  |

| Product information and application use   |
|---|
| ProPEX® engineered polymer (EP) water meter service fittings make connections for Uponor crosslinked polyethylene (PEX) tubing for use in hot or cold domestic potable water systems. Inlet PEX end is manufactured with an Uponor ProPEX fitting for connections to Uponor AquaPEX® tubing. The other end is manufactured to meet the NPSM threads of the water meter. |



Note: Temperature and pressure ratings stated are hydrostatic ratings. For domestic hot-water (DHW) and DHW recirculation installations, operating conditions should not exceed 140°F (60°C) at 80 psi (5.5 bar) in accordance with ASTM F2023. For additional information regarding application-specific temperature and pressure ratings, refer to the Uponor PEX Piping Systems Design and Installation Manual.

| Part name  | Part no.  | A<br>[mm] | B<br>[mm] | C<br>[mm] | D<br>[mm] | E<br>[mm] | F<br>[mm] | G<br>[mm] | H<br>[mm] | Subcomponent<br>Material  | End<br>Type<br>1 |
|--|-----------|-----------|-----------|-----------|-----------|-----------|-----------|-----------|-----------|---|------------------|
| ProPEX EP Straight Water Meter Fitting, 3/4" PEX x 1" NPSM   | WS4360750 | 75.92     | 44.45     | 48.26     | 20.83     | 11.26     | 55.09     | 22.23     | 24.26     | Body: Engineered Polymer<br>Washer: EPDM<br>Plastic nut: Engineered Polymer (EP)<br>Metal nut: Brass      | ProPEX 3/4"      |
| ProPEX EP Straight Water Meter Fitting, 1" PEX x 1 1/4" NPSM | WS4361000 | 91.60     | 53.98     | 57.15     | 25.40     | 11.89     | 66.20     | 26.99     | 30.25     | Body: Engineered Polymer<br>Washer: EPDM<br>Plastic nut: Engineered Polymer (EP)<br>Metal nut: Brass      | ProPEX 1"        |
| ProPEX EP Elbow Water Meter Fitting, 3/4" PEX x 1" NPSM      | WS4360751 | 40.01     | 48.26     | 44.45     | 20.83     | 11.26     | 48.90     | 24.13     | -         | Body: Engineered Polymer (EP)<br>Washer: EPDM<br>Plastic nut: Engineered polymer (EP)<br>Metal nut: Brass | ProPEX 3/4"      |
| ProPEX EP Elbow Water Meter Fitting, 1" PEX x 1 1/4" NPSM    | WS4361001 | 49.30     | 57.15     | 53.98     | 25.40     | 11.89     | 57.79     | 28.58     | -         | Body: Engineered Polymer (EP)<br>Washer: EPDM<br>Plastic nut: Engineered polymer (EP)<br>Metal nut: Brass | ProPEX 1"        |

| Part name  | Part no.  | End Type 2  | Weight per UOM [kg/UOM] |
|--|-----------|-------------|-------------------------|
| ProPEX EP Straight Water Meter Fitting, 3/4" PEX x 1" NPSM   | WS4360750 | NPSM 1"     | 0.0998                  |
| ProPEX EP Straight Water Meter Fitting, 1" PEX x 1 1/4" NPSM | WS4361000 | NPSM 1-1/4" | 0.136                   |
| ProPEX EP Elbow Water Meter Fitting, 3/4" PEX x 1" NPSM      | WS4360751 | NPSM 1"     | 0.109                   |
| ProPEX EP Elbow Water Meter Fitting, 1" PEX x 1 1/4" NPSM    | WS4361001 | NPSM 1-1/4" | 0.154                   |

| Part name   | Part no. | Codes   | Standards  | Listings   |
|---|----------|---|--|--|
| ProPEX engineered polymer (EP) water meter fittings   | All      | UPC IBC IRC IPC NPC of Canada UMC NSPC IMC  | ASTM E814/ULC S115 ASTM F877 ASTM F1960 CSA B137.5 ULC S102.2 ASTM E119/UL 263 NSF/ANSI/CAN 61 ULC S101 ASTM E84 NSF/ANSI 14 | IAPMO-ES HUD MR 1269 ICC-ES-PMG cNSFus-pw U.P.Code cQALus P321 |
| Installation  |          | Related applications  |  |  |
| ProPEX tool and ProPEX rings (sold separately) are required for connecting the PEX tubing. For more information, refer to the Uponor Piping Pocket Guide. |          | -   |  |  |
| Footnotes   |          | Contact information   |  |  |
| -   |          | Uponor Inc.<br>5925 148th Street West<br>Apple Valley, MN 55124<br>T 800.321.4739<br>F 952.891.2008 |  |  |
|   |          | Uponor Ltd.<br>6510 Kennedy Road<br>Mississauga, ON L5T 2X4<br>T 888.594.7726<br>F 800.638.9517     |  |  |