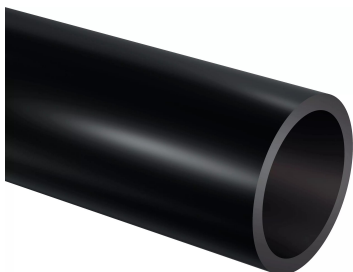


## Uponor Meltaway feeder tubes 110x6,8 6m

**1033629**

- Made of HDPE



### Application information Uponor Meltaway feeder tubes

#### Specification

- snow- and ice melting system for areas with solid ground covering
- Made of high density polyethylene (HDPE) pipe
- Equipped with compact-welded couplings oriented in two directions with an angle of 120° between them

#### Application

- outdoor surface warming
- snow and ice melting

Uponor Meltaway feeder tubes 110x6,8 6m

1033629



Technical data

Item (unit of measurement)	m
Item no VVS	077680110
Packaging Quantity PL1	6

Documents

Page with all documents



Uponor Corporation

Ilmalantori 4  
00240, Helsinki  
Finland

T +358 (0)20 129 211  
E info@uponor.com  
F +358 (0)20 129 2841

www.uponor.com