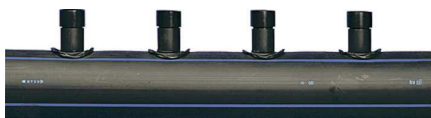


Uponor Meltaway double manifold 75 2x12 c/c500 6m

1033634

- Double manifold



Application information Uponor Meltaway double manifold

Specification

- snow- and ice melting system for areas with solid ground covering
- Made of high density polyethylene (HDPE) pipe
- Equipped with compact-welded couplings oriented in two directions with an angle of 120° between them

Application

- outdoor surface warming
- snow and ice melting

Uponor Meltaway double manifold 75 2x12 c/c500 6m

1033634



Technical data

Item (unit of measurement)	pce
Item no NRF	8601815
Packaging Quantity PL1	1

Documents

Page with all documents

↓

Uponor Corporation

Ilmalantori 4
00240, Helsinki
Finland

T +358 (0)20 129 211
E info@uponor.com
F +358 (0)20 129 2841

www.uponor.com