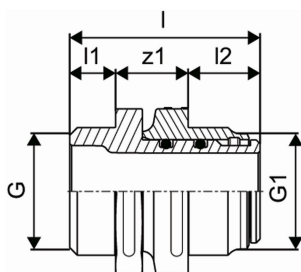


Uponor Wipex swivel union G1

1045455

- Rotatable double nipple
- Cylindric thread G" for O-ring sealing
- 6 bar, SDR 11 / 10 bar, SDR 7,4
- DR = dezincification resistance brass



Application information Uponor Wipex swivel union

Specification

- Wipex fittings in corrosion-resistant brass, dezincification based on EN ISO 6509 with stainless steel screw.
- O-ring sealing between Wipex coupling and base fitting connectors
- Bolt set for couplers include a hex socket bolt in stainless steel and the nut as well as washer from brass
- Pre-open sleeve design with assembled support part for the dimension 63-110mm.

Application

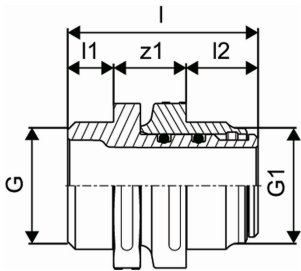
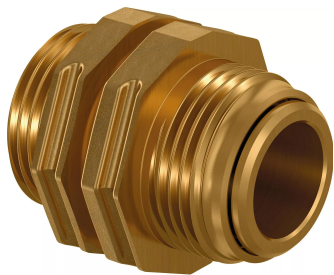
- Fittings for pipe systems Thermo, Aqua, Quattro, Supra, Supra PLUS and Supra Standard
- Connection of PE and PE-Xa medium pipe to couplers with cylindrical inch male thread
- Max. operating temperature 95°C

Certification

- Approvals should be checked by local responsible person

Uponor Wipex swivel union G1

1045455



Technical data

Item (unit of measurement)	pce
Item no VVS	087534008
Item no LVI	1937000
Item no NRF	8360801
Length (l)	50 mm
Length (l1)	12 mm
Length (l2)	19 mm
Packaging Quantity PL1	1
Packaging Quantity PL3	20
Packaging Quantity PL4	1200

Documents

Page with all documents



Uponor Corporation

Ilmalantori 4
00240, Helsinki
Finland

T +358 (0)20 129 211
E info@uponor.com
F +358 (0)20 129 2841

www.uponor.com