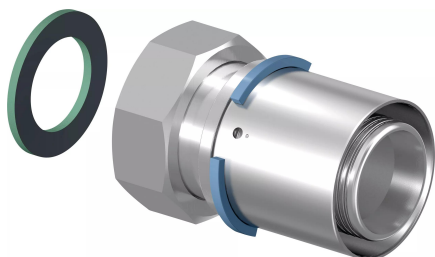


Uponor S-Press adapter swivel nut 50-G1 3/4"SN

1046938

- Made of tin-plated brass
- Fast installation with easy bevel and without calibration
- Colour code
- Releasable screw connector for connection to on-wall fittings, filters and shut-off valves
- Thread acc. to EN ISO 228-1.



Application information Uponor S-Press adapter swivel nut

Specification

- with fixed press sleeve
- stop ring
- test safety

Application

- Tap water: The permanent operating temperature ranges from 0°C to 70°C at a maximum permanent operating pressure of 10 bar. The short-term malfunction temperature is 95°C for a period of 100 hours in the operating life time.

- Heating: The permanent operating temperature ranges up to 80°C at a maximum permanent operating pressure of 10 bar. The short-term malfunction temperature is 100°C for a period of 100 hours in the operating life time.

- if not different mentioned:

Male and female threads acc.to EN 10226-1.

Certification

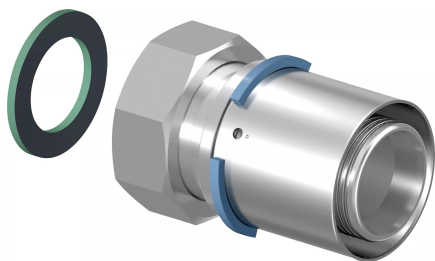
- Approvals by local OM.

E.g.

- DVGW
- AENOR

Uponor S-Press adapter swivel nut 50-G1 3/4"SN

1046938



Technical data

Item (unit of measurement) pce

Item no VVS 045483448

Length (l) 82 mm

Length (l1) 12 mm

Length (l2) 38 mm

Packaging Quantity PL1 3

Packaging Quantity PL4 1152

Documents

Page with all documents 

Uponor Corporation

Ilmalantori 4
00240, Helsinki
Finland

T +358 (0)20 129 211
E info@uponor.com
F +358 (0)20 129 2841

www.uponor.com