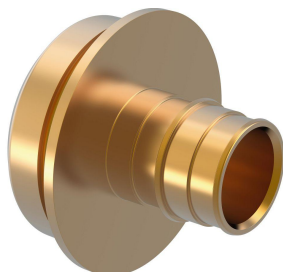


## Uponor RS adapter PL Q&E 32-RS2

**1047022**

- RS
- Positive listed brass
- Uponor Q&E Ring must be ordered separately



### Application information Uponor RS adapter PL Q&E

#### Specification

- with fixed press sleeve
- stop ring
- colour code
- Test safety

#### Application

- Tap water: The permanent operating temperature ranges from 0°C to 70°C at a maximum permanent operating pressure of 10 bar. The short-term malfunction temperature is 95°C for a period of 100 hours in the operating life time.
- Heating: The permanent operating temperature ranges up to 80°C at a maximum permanent operating pressure of 10 bar. The short-term malfunction temperature is 100°C for a period of 100 hours in the operating life time.

if not different mentioned:

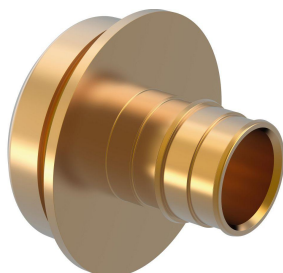
- Male and female threads acc.to EN 10226-1.

#### Certification

- Approvals by local OM.
- E.g.
- DVGW
  - AENOR

## Uponor RS adapter PL Q&E 32-RS2

1047022



### Technical data

Item (unit of measurement)	pce
Length (l)	57 mm
Length (l1)	20 mm
Length (l2)	34 mm
Packaging Quantity PL1	1
Packaging Quantity PL4	480

### Documents

Page with all documents



#### Uponor Corporation

Ilmalantori 4  
00240, Helsinki  
Finland

T +358 (0)20 129 211  
E info@uponor.com  
F +358 (0)20 129 2841

www.uponor.com