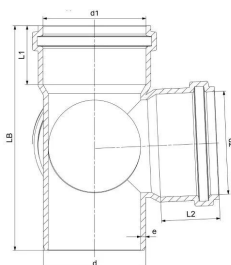


GF HT-PP corner double branch 87,5deg 110-110mm

1150172

- Gray, PP-material, according to EN 1451



Application information GF HT-PP corner double branch 87,5deg

Specification

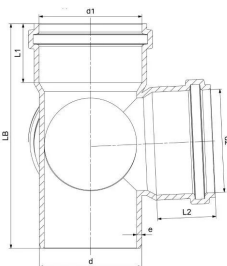
- The system is made from monolayer polypropylene (PP) to ensure reliable performance in standard drainage applications.
- It is designed for non-pressurized soil and wastewater drainage in residential and commercial buildings.
- The system is fully compliant with EN 1451-1 for plastic soil and waste discharge and EN 13501 for fire classification.
- It achieves fire performance rating E according to EN 13501.
- The pipes are suitable for short-term exposure to high-temperature wastewater.
- The material provides high resistance to chemicals commonly found in domestic and commercial wastewater.
- The push-fit socket design with integrated sealing rings ensures quick installation and leak-tight connections.
- The system is available in nominal diameters ranging from DN 32 to DN 200.

Application

- Residential buildings
- Office buildings and conference facilities
- Schools, libraries, hospitals, and hotels
- Underground and above-ground house drainage
- Sustainable / green building projects
- Industrial facilities (short- and long-term use)
- Wastewater from kitchens, bathrooms, and household appliances (e.g. washing machines, dishwashers)

GF HT-PP corner double branch 87,5deg 110-110mm

1150172



Status

Item Available From date

2026-02-01

Product code

Item no EAN 8698652125589

Item no GF 4901211015521

Item no GTIN 08698652125589

Item no VVS 186422110

Dimensions

Item Unit Height 241

Item Unit Length 201

Item Unit Weight 0,99

Item Unit Width 201

Item_UOM pce

Packaging

Packaging GTIN PL1 06414900554435

Packaging GTIN PL2 06414900231367

Packaging GTIN PL4 06414900104852

Packaging Height PL1 241

Packaging Height PL2 400

Packaging Height PL4 1200

Packaging Length PL1 201

Packaging Length PL2 800

Packaging Length PL4 1200

Packaging Quantity PL1 1

Packaging Quantity PL2 20

Packaging Quantity PL4 120

Packaging Type PL1 Piece

Packaging Type PL2 Medium_Box

Packaging Type PL4	Pallet
Packaging Volume PL1	0,009736641
Packaging Volume PL2	0,192
Packaging Volume PL4	1,152
Packaging Weight PL1	0,99
Packaging Weight PL2	19,8
Packaging Weight PL4	143,8
Packaging Width PL1	201
Packaging Width PL2	600
Packaging Width PL4	800

Documents

Page with all documents



Uponor Corporation

Ilmalantori 4
00240, Helsinki
Finland

T +358 (0)20 129 211

www.uponor.com