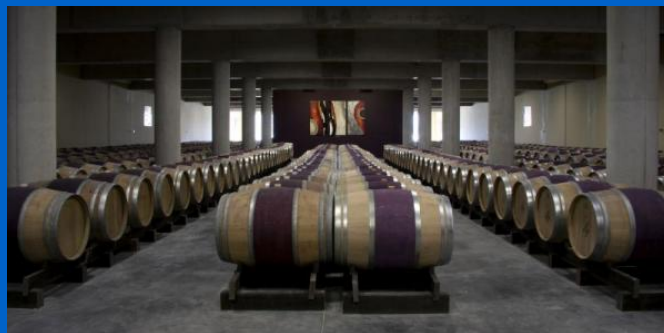


References

Glenelly wine cellar, South Africa



Uponor involvement



3000

Glenelly wine cellar, South Africa

Cape Town wine farm features South Africa's first TABS project and sets new standards to the construction industry.

Project Facts:

Location

Stellenbosch, South Africa

Completion

2009

Building Type

Agricultural buildings

Product systems

Radiant Heating & Cooling

Address

Lelie Street,

Website

<http://glenellyestate.com>

Project Type

New building

Partners

enduser

[May de Lencquesaing](#)

Lelie Street, Idas Valley, Stellenbosch

7600 South Africa

South Africa

installer

[Orengé Environneering Design](#)

P.O Box 5906 Tygervally 7536

South Africa

contractor

[Afriplex](#)

Unit 1 8 Daytona Road Killarney

Gardens

South Africa

The Glenelly Estate is in the Idas Valley, located in Stellenbosch, on the southern slopes of the Simonsberg Mountain. Its origins date back to the seventeenth century. In 2003 May de Lencquesaing, seeing great potential in the terroir of the 128 hectares Glenelly farm, decides to invest in this young republic and acquires the estate from the Garlick family.

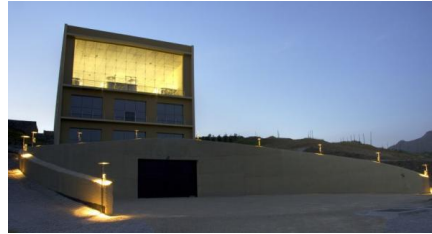
Internationally considered as a benchmark in climate engineering, Glenelly Estate is a winery that features South Africa's first TABS (Thermally activated building systems) project and sets new standards to the construction industry in terms of innovation and climate engineering.

Engineered application of the most current building science and technology ensures room conditions of 16°C and 75% RH year round. An integrated passive strategy uses passive night time cooling combined with an evaporative cooling tower in winter and air cooled chiller plant in summer.

The successful operation of the project has defined new boundaries for TABS as a technology and has proven it's functionality in harsh South African summer climate. A total area of 3000 m² is activated by circulating water through the structure of the building. Thermal inertia of the 1600 tonnes of concrete controlled by sophisticated logic plays a significant role in the detailed design.

Glenelly wine cellar, South Africa





GF Building Flow Solutions

Headquarter:
Ilmalantori 4
00240 Helsinki
Finland

Phone +358 20 129 211
Contact us

Email for communication
requests: communications@georgfischer.com
Contact for Headquarter, PR, Offices in
Australia, Dubai, International Sales and for
Singapore

W www.uponor.com