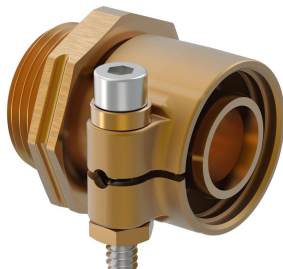


Uponor Wipex coupling PN10 40x5,5-G1 1/4

1018339

- Connection of PE-Xa or PE pipe
- 10 bar, SDR 7,4
- Cylindric thread G" for O-ring sealing
- DR = dezincification resistance brass



About Uponor Wipex coupling PN10

Specification

- Wipex fittings in corrosion-resistant brass, dezincification based on EN ISO 6509 with stainless steel screw.
- O-ring sealing between Wipex coupling and base fitting connectors
- Bolt set for couplers include a hex socket bolt in stainless steel and the nut as well as washer from brass
- Pre-open sleeve design with assembled support part for the dimension 63-110mm.

Application

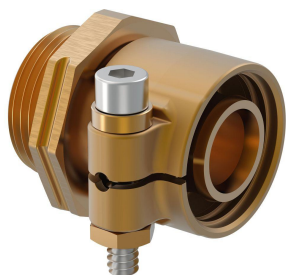
- Fittings for pipe systems Thermo, Aqua, Quattro, Supra, Supra PLUS and Supra Standard
- Connection of PE and PE-Xa medium pipe to couplers with cylindrical inch male thread
- Max. operating temperature 95°C

Certification

- Approvals should be checked by local responsible person

Uponor Wipex coupling PN10 40x5,5-G1 1/4

1018339



Technical documents

Download documents here 

Uponor UK

Blackmor Lane The Pavilion
WD18 8GA, Watford
UK

T +44 (0)1923 927000
E enquiries.uk@uponor.com

www.uponor.com/en-gb